

LOTS 3-12 INCL. BL. 30 KINNEY IMP. PLAT ROSEBURG OREGON

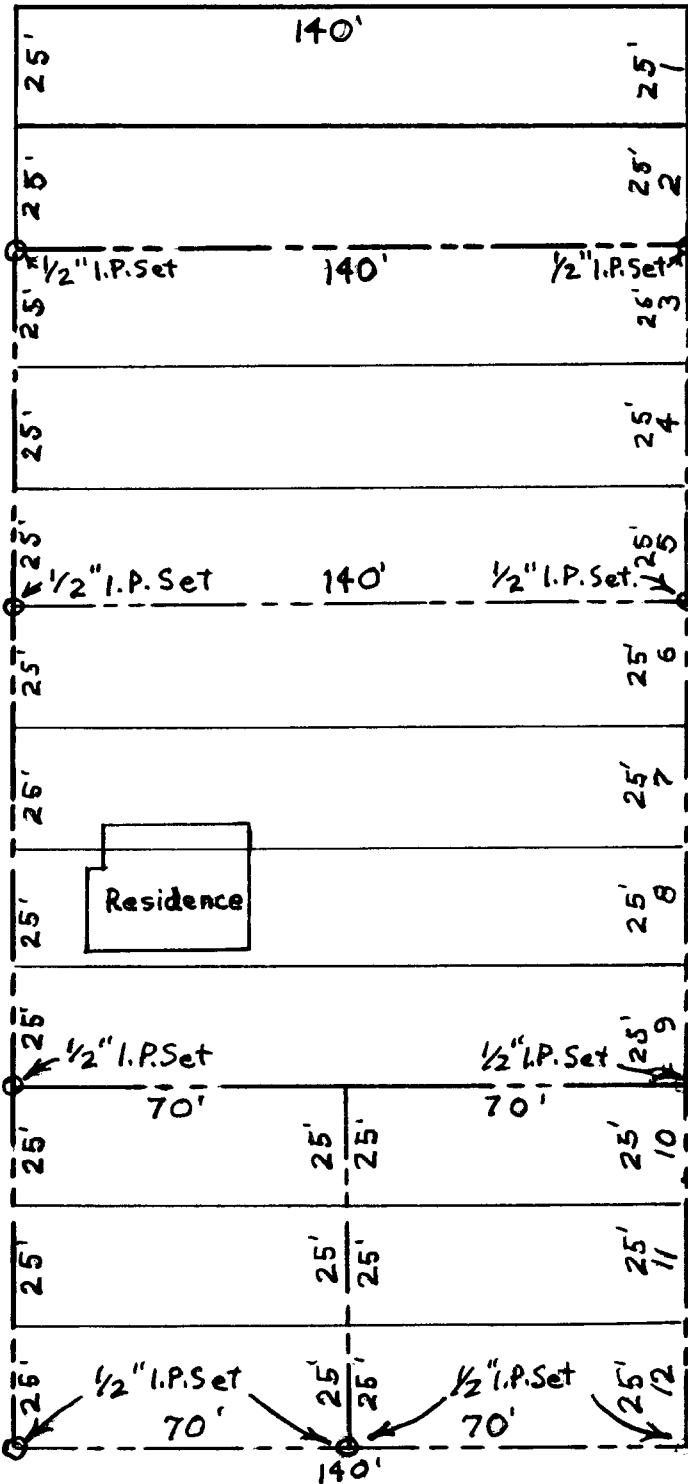
DENVER ST. 60'

Violet Cole

Mon.



FREMONT AVE. 60' ON WEST SIDE



20' ALLEY

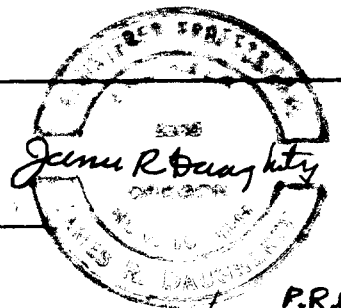
24	
23	
22	
21	
20	
19	FILED <i>LL</i> RECEIVED
18	JAN 11 1963
17	COUNTY SURVEYOR DOUGLAS COUNTY, ORE.
16	
15	
14	
13	

CASPER ST. 60'

Mon.

Scale 1"=40'

CIVIL-SANITARY ENGINEER  
WINSTON OREGON



P.R.B.

51/241-10