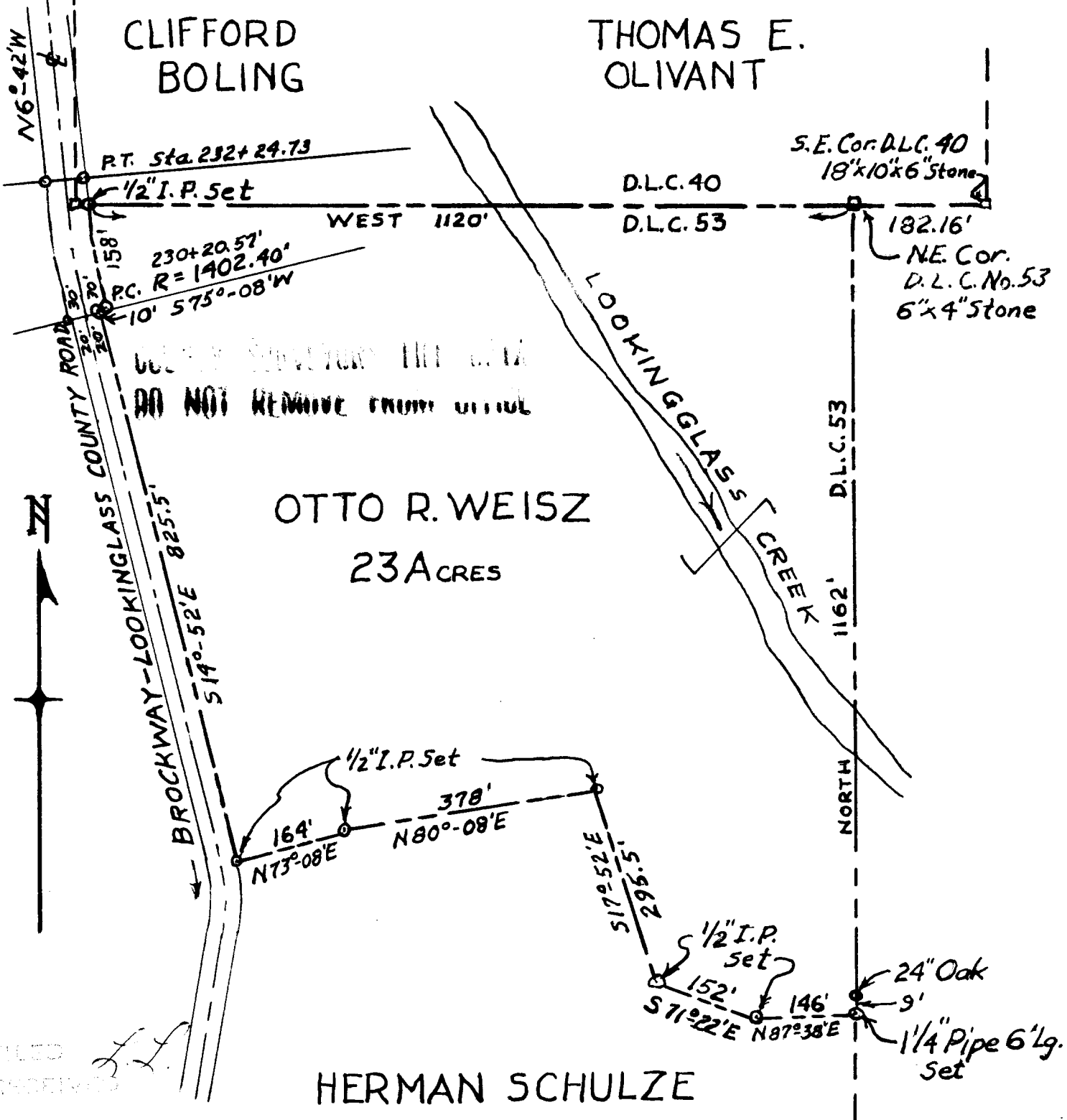


OTTO R. WEISZ PARCEL IN D.L.C. 53 · SECT. 18 · T28S · R6W · WM
DOUGLAS COUNTY · ORE.

CLIFFORD
BOLING

THOMAS E.
OLIVANT



DO NOT REMOVE FROM OFFICE

OTTO R. WEISZ
23 ACRES

HERMAN SCHULZE

SURVEYED BY

JAMES R. DAUGHERTY

CIVIL-SANITARY ENGINEER

ROSEBURG · ORE.

FILED
RECEIVED

COUNTY SURVEYOR
DOUGLAS COUNTY, ORE.

SCALE 1" = 200'

MAR. 20, 1958.

S. File No. 51/2417

