

COUNTY SURVEYORS FILE DATA
DO NOT REMOVE FROM OFFICE

GADDIS PLAT A

DOUGLAS COUNTY, OREGON

SEC. 13, TWP. 27 S., RG. 6 W. W. M.

SCALE: 1 INCH = 100 FT.

Surveyed For S & S Builders
Surveyed By Don Garrett
Feb. 13, 1964
•- Denotes 5/8" x 30" Iron Rod Set

REGISTERED
OREGON
LAND SURVEYOR

Don E. Garrett

JULY 14, 1931
DON E. GARRETT
544

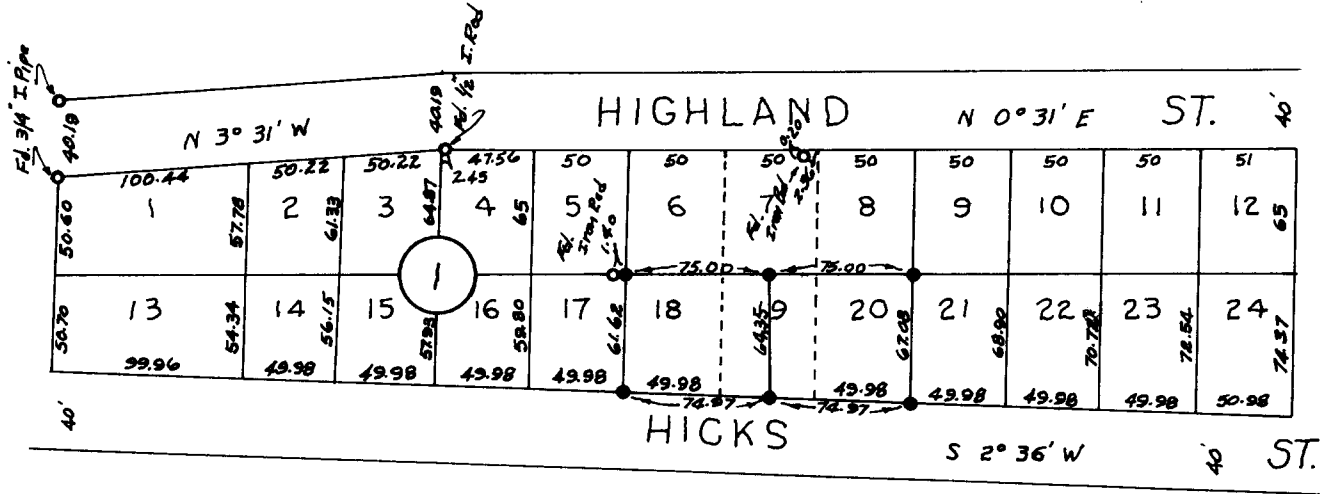
Void

SCOTT ST. N 88° 00' W 40'

HIGHLAND ST. N 0° 31' E 40'

HICKS ST. S 2° 36' W 40'

Corners See
See M 30
Correct
Down



FILED *L.L.*
RECEIVED

FEB 18 1964

COUNTY SURVEYOR
DOUGLAS COUNTY, ORE.