

1/4 Cor. 11-12
 FD. Brass Cap
 22" Oak N 84° W 59.9'
 12" Oak S 29° 30' W 50.0'

Sec. 12 T 27 S R 7 W W.M.

**COUNTY SURVEYORS FILE DATA
 DO NOT REMOVE FROM OFFICE**

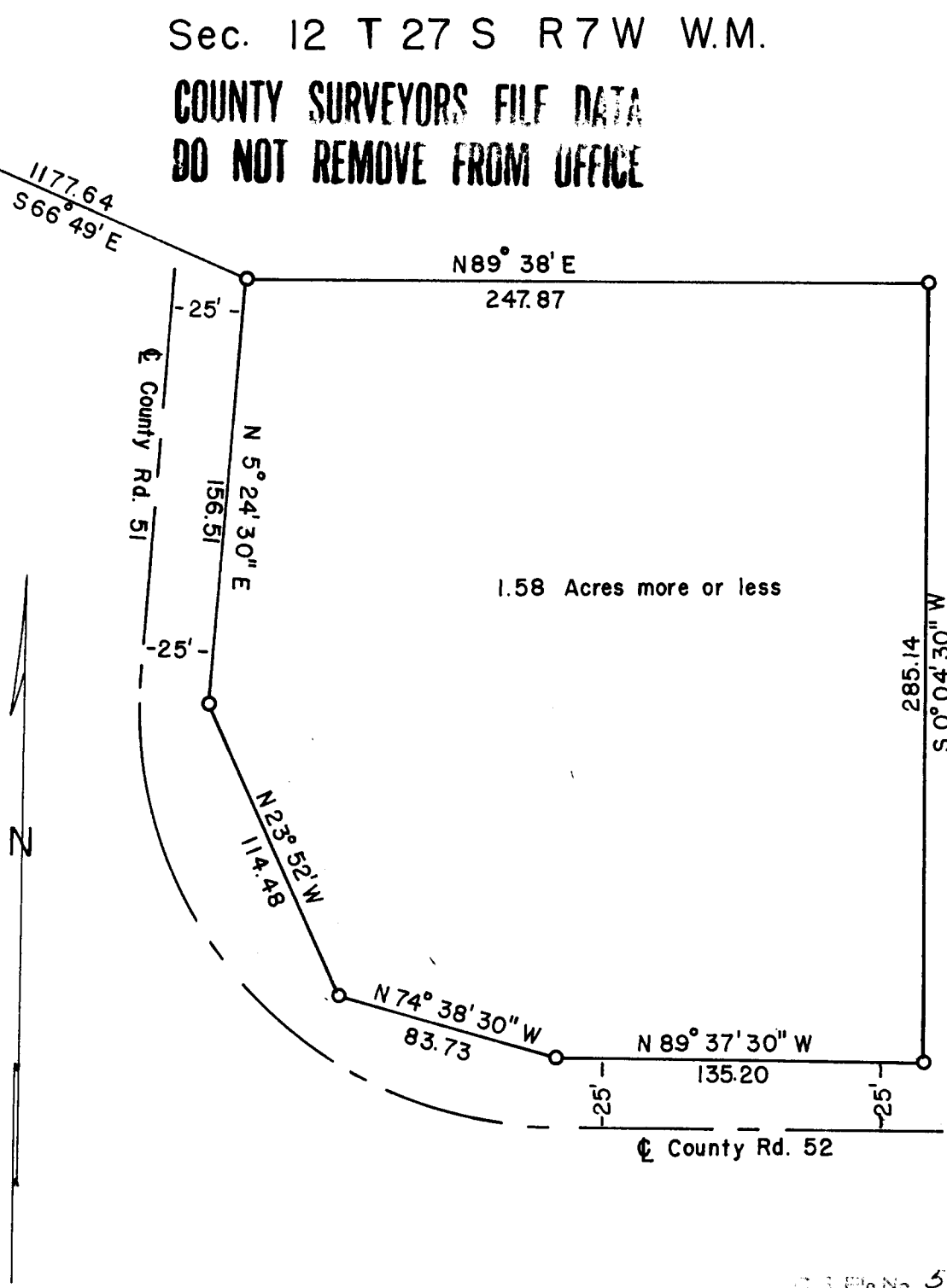
Survey For John B. Richards
 Surveyor Don Garrett
 July 3, 1962
 Scale- 1" = 60'

o - Denotes 1/2" Iron Rod

Note: Bearings are based on a solar Observation.



FILED
 RECEIVED
Don Garrett
 COUNTY SURVEYOR
 DOUGLAS COUNTY, ORE.



C.S. File No. 51/240-1

JUL 5 1962
 COUNTY SURVEYOR
 DOUGLAS COUNTY, ORE.