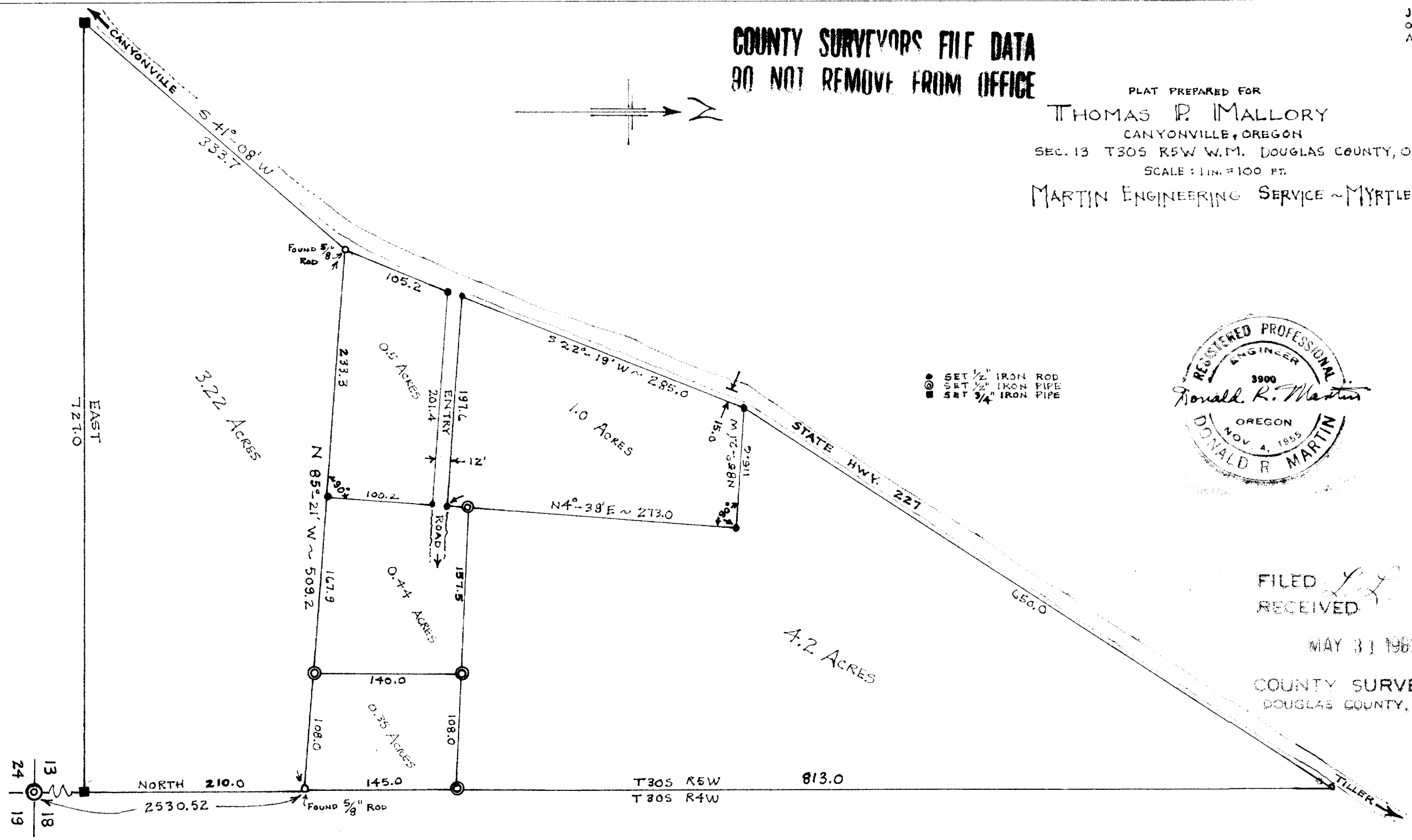
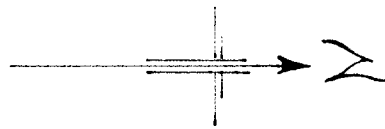


JUNE 1956
OCTOBER 1960
APRIL 1962

COUNTY SURVEYORS FILE DATA
DO NOT REMOVE FROM OFFICE

PLAT PREPARED FOR
THOMAS P. MALLORY
CANYONVILLE, OREGON
SEC. 13 T30S R5W W.M. DOUGLAS COUNTY, OREGON
SCALE: 1 IN. = 100 FT.
MARTIN ENGINEERING SERVICE - MYRTLE CREEK



- SET 1/2" IRON ROD
- SET 1/2" IRON PIPE
- SET 3/4" IRON PIPE



FILED *LL*
RECEIVED

MAY 31 1962

COUNTY SURVEYOR
DOUGLAS COUNTY, ORE.

T30S R5W
T30S R4W

813.0

51/237-7