

COUNTY SURVEYORS FILE DATA  
DO NOT REMOVE FROM OFFICE

# METES & BOUNDS SURVEY IN SECTION 15, T 27 S, R 6 W, W.M.

SURVEYED FOR: O. L. BLAKE

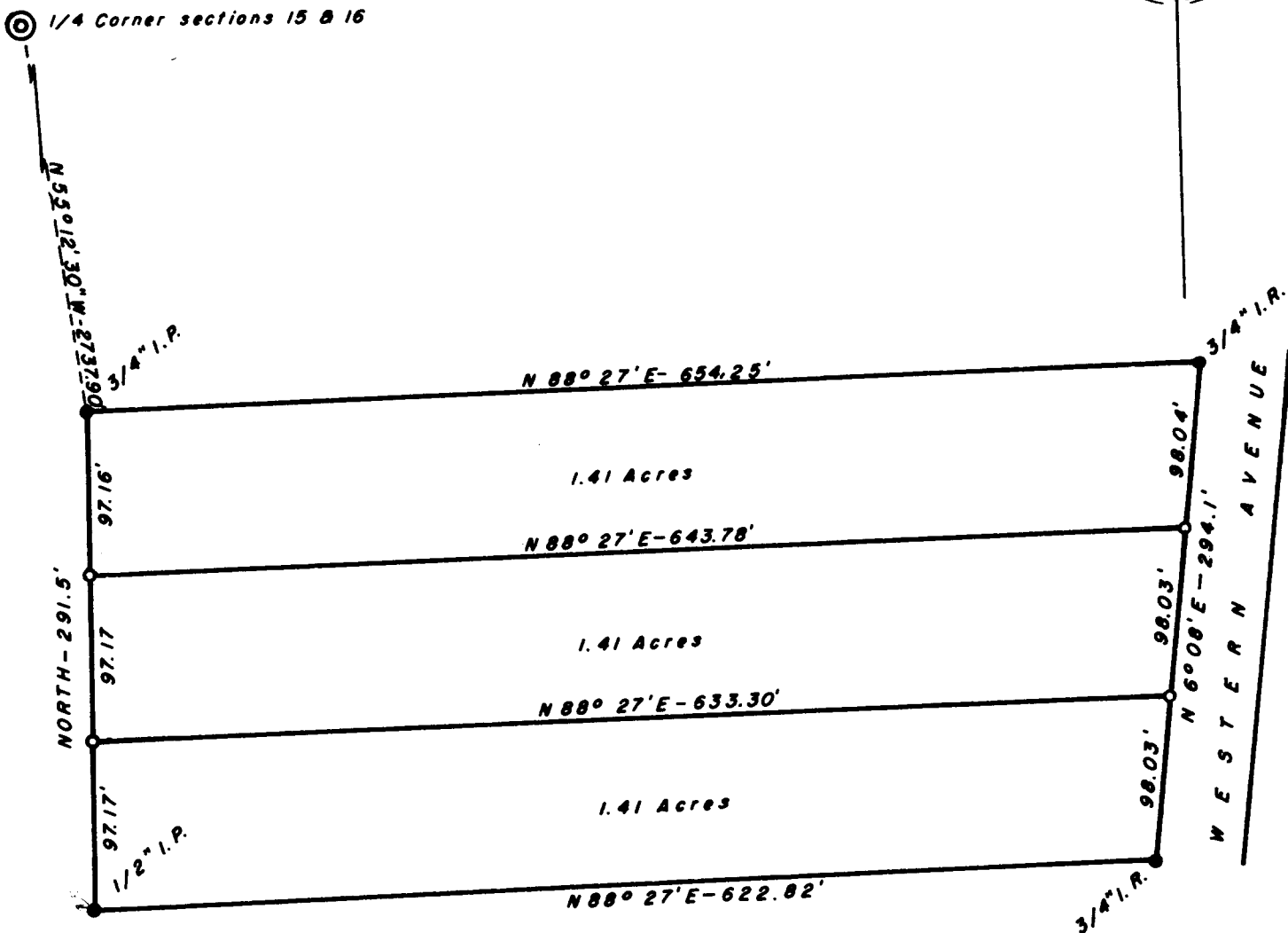
SCALE: 1" = 100'

SURVEYED BY: G. R. LECKLIDER-ENG'R.

MAY, 1962

- DENOTES CORNERS FOUND.
- DENOTES 5/8" X 36" IRON RODS SET.

NOTE: REFER TO C.S. FILE MB-20 (Base of bearings).



FILED *L.L.*  
RECEIVED

JUN 1 1962

COUNTY SURVEYOR  
DOUGLAS COUNTY, ORE.

