

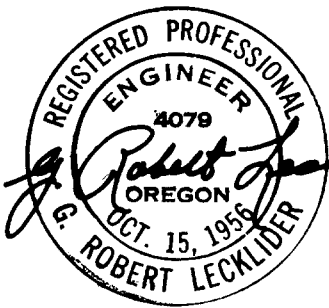
METES & BOUNDS SURVEY TO SET PROPERTY CORNERS IN JEREMIAH HUNTLEY DLC No.56 T27S, R6W, DOUGLAS COUNTY, ORE.

SURVEYED FOR: HARRY WINTER
 SURVEYED BY: G. R. LECKLIDER-ENG'R.

MAY, 1962
 SCALE: 1" = 50'

- DENOTES CORNERS FOUND.
- DENOTES 3/4" X 36" IRON ROD SET.

**COUNTY SURVEYORS FILE DATA
 DO NOT REMOVE FROM OFFICE**



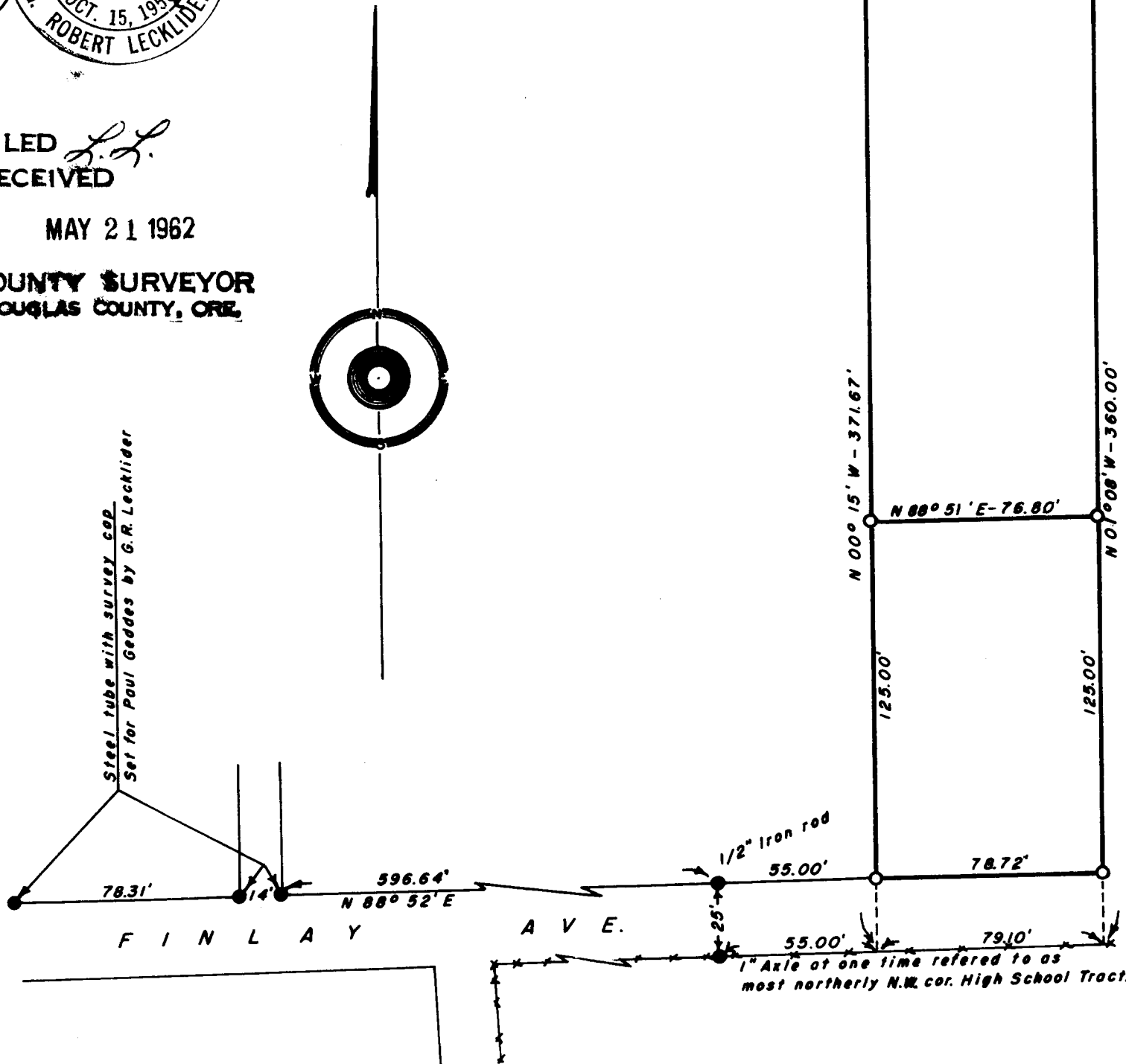
SOUTH UMPQUA RIVER

LEFT BANK RIVER
 N 82° 08' W - 74.28'

FILED *L.L.*
 RECEIVED

MAY 21 1962

COUNTY SURVEYOR
 DOUGLAS COUNTY, ORE.



Steel tube with survey cap
 Set for Paul Geddes by G. R. Lecklider