

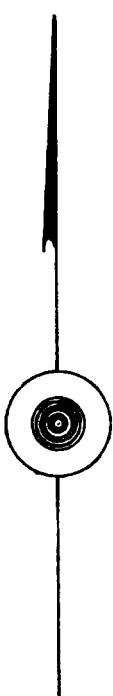
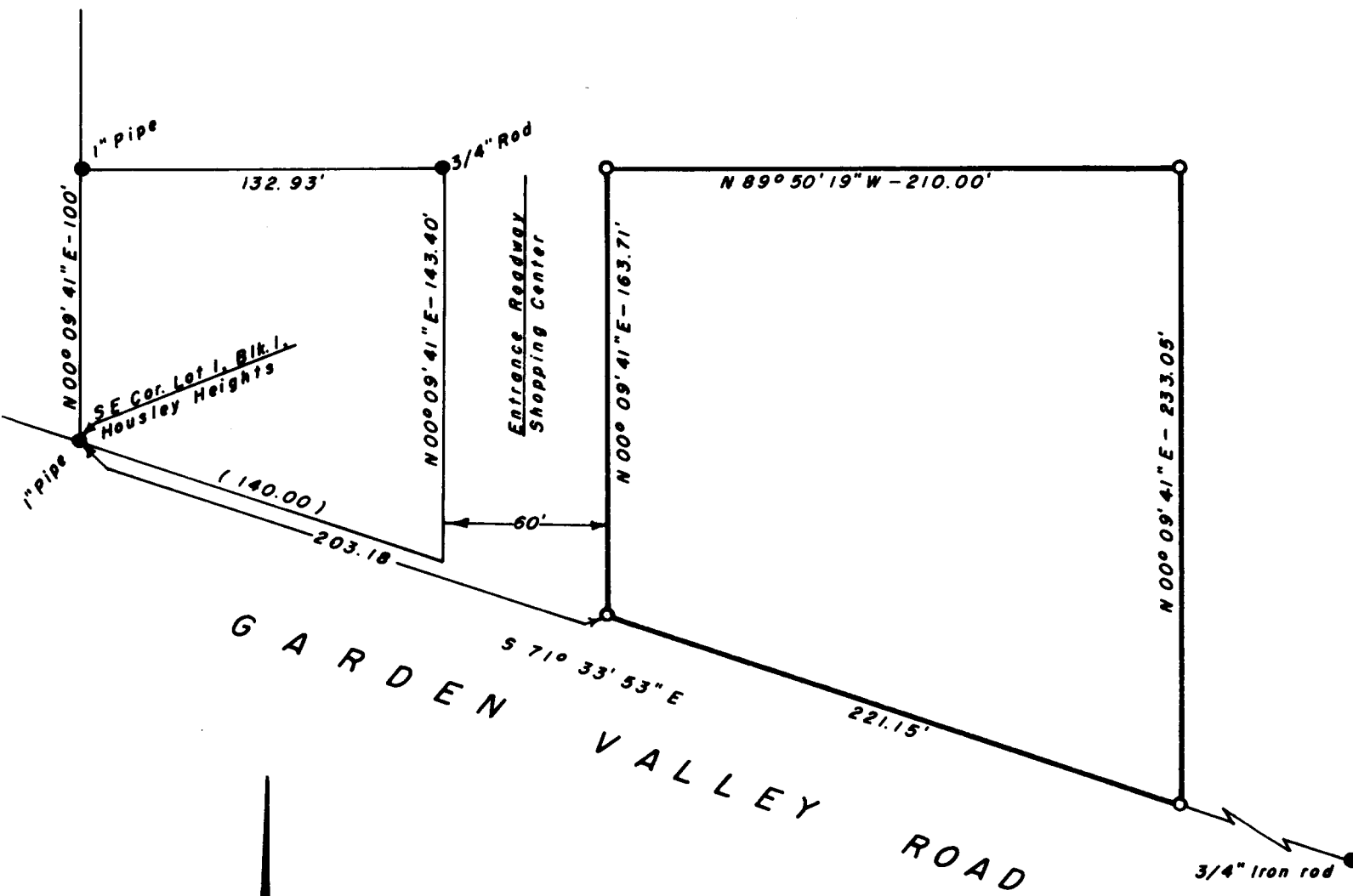
COUNTY SURVEYORS FILE DATA
DO NOT REMOVE FROM OFFICE

SURVEY IN SECTION 13, T. 27 S., R. 6 W., W.M.

SURVEYED FOR: DRIVE-N-SAVE MARKET
SURVEYED BY: G. R. LECKLIDER-ENG'R.

MARCH, 1962
SCALE: 1" = 60'

- DENOTES MONUMENTS FD. AS PER C.S. FILE 51/33 AND 51/60.
- DENOTES CORNERS SET- 3/4" X 36" IRON ROD.



REGISTERED PROFESSIONAL
ENGINEER
4079
OREGON
OCT. 15, 1956
G. ROBERT LECKLIDER

G. Robert Lecklider

FILED
RECEIVED

APR 10 1962

COUNTY SURVEYOR
DOUGLAS COUNTY, ORE.

C. S. File No. 51/235-4