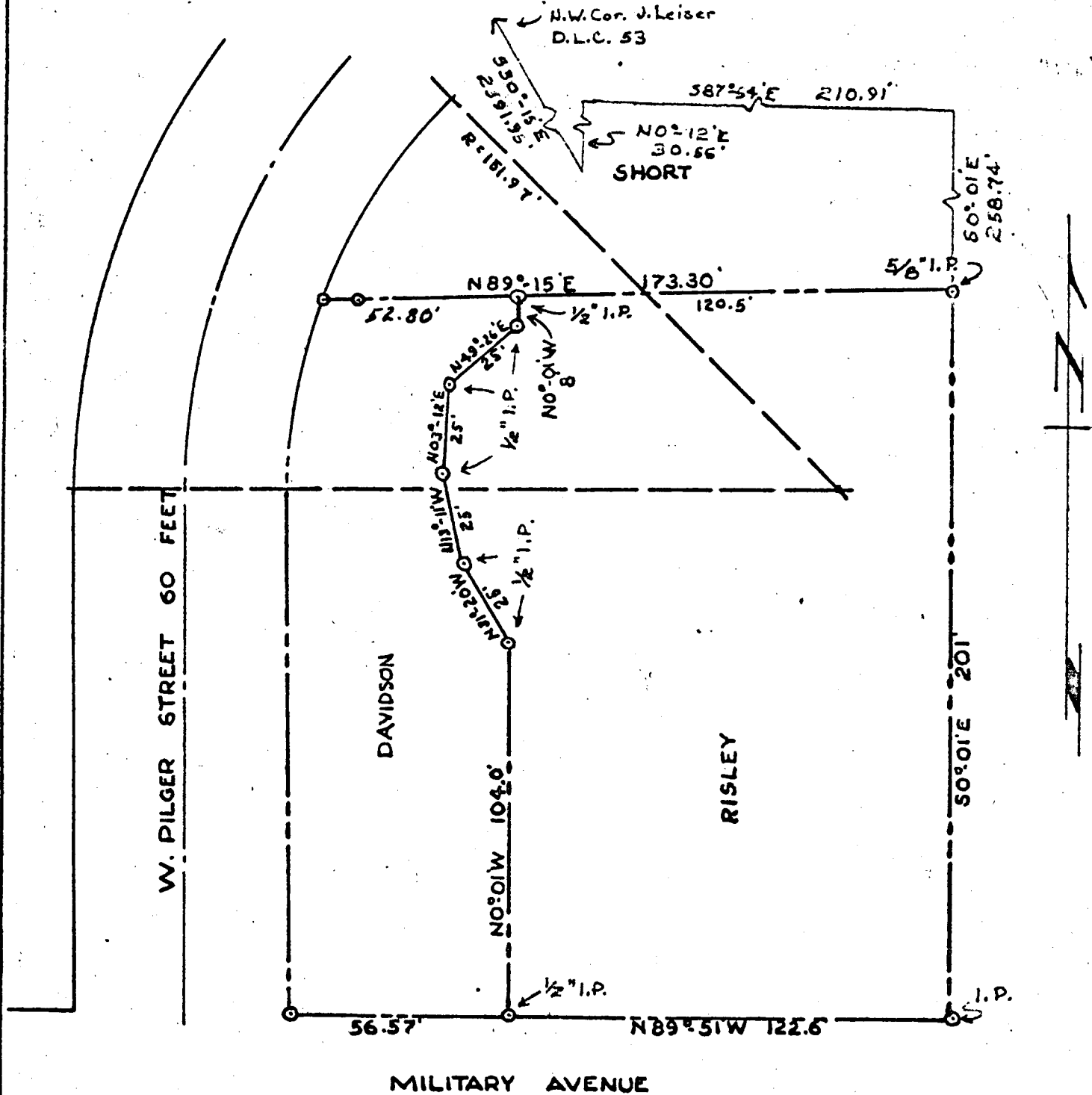


H.F. DAVIDSON PARCELS - W. PILGER ST. ROSEBURG, ORE.

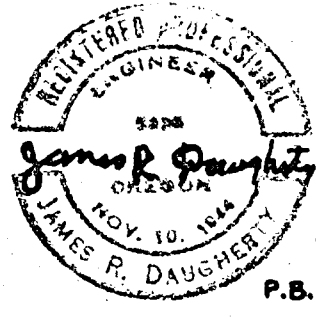


SCALE 1"=40'

OCT. 5, 1963

REV. DEC. 21, 1964

JAMES R. DAUGHERTY
 CIVIL-SANITARY ENGINEER
 ROSEBURG, OREGON



COUNTY SURVEYORS FILE DATA
 DO NOT REMOVE FROM OFFICE

C. S. File No. 51/232-10

Print Only

DO NOT REMOVE FROM FILE

T 27-6-23

ALL 1963
 COUNTY SURVEYOR
 DOUGLAS COUNTY, OREGON