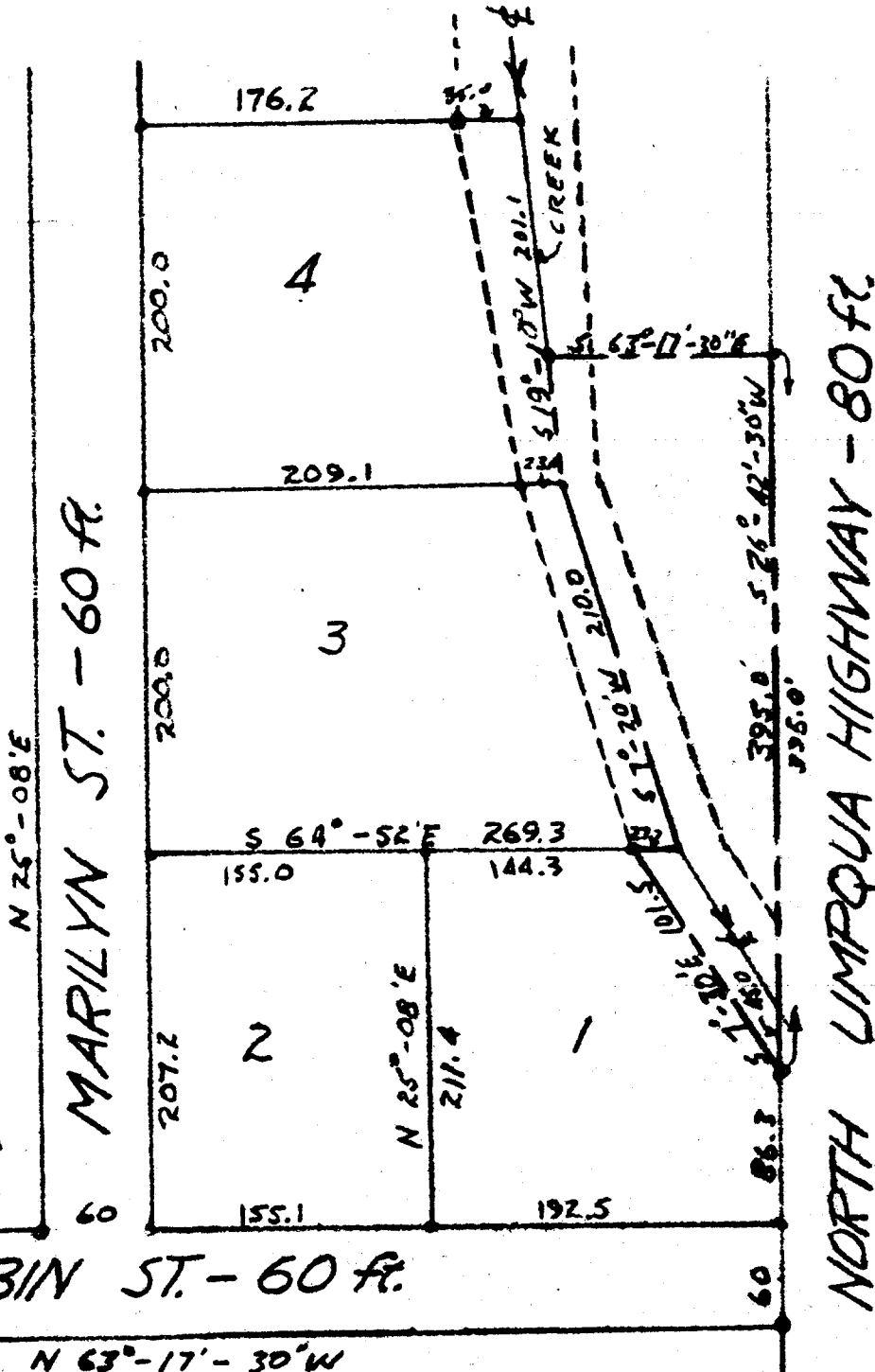
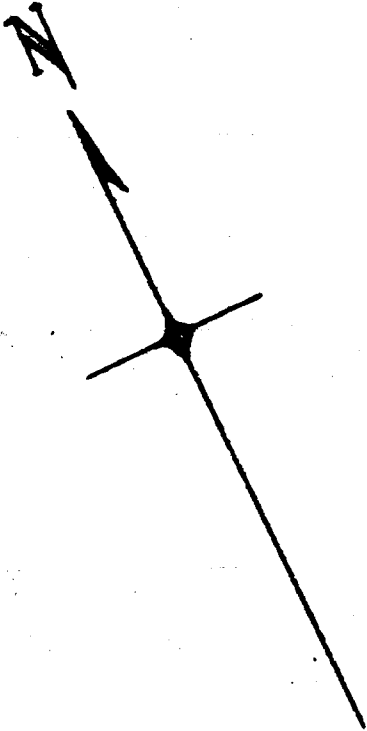


# PARCEL EAST OF ST. GEORGE SUBDIVISION

DOUGLAS COUNTY - ROSEBURG, OREGON

Ester Crose

COUNTY SURVEYORS FILE DATA  
DO NOT REMOVE FROM OFFICE



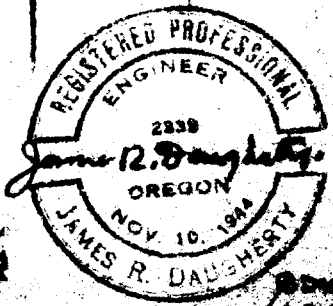
ROBIN ST. - 60 ft.

NORTH UMPQUA HIGHWAY - 80 ft.

FILED L.L.  
RECEIVED

JAMES R. DAUGHERTY  
CIVIL-SANITARY ENGINEER JUN 29 1962  
WINSTON, OREGON

COUNTY SURVEYOR  
DOUGLAS COUNTY, ORE.



Scale 1" = 100'  
June 26, 1962

sw 1/4  
T27-5 S.13

C.S. File No. 51232