

# EIFERT ESTATE PROPERTY EXCHANGE

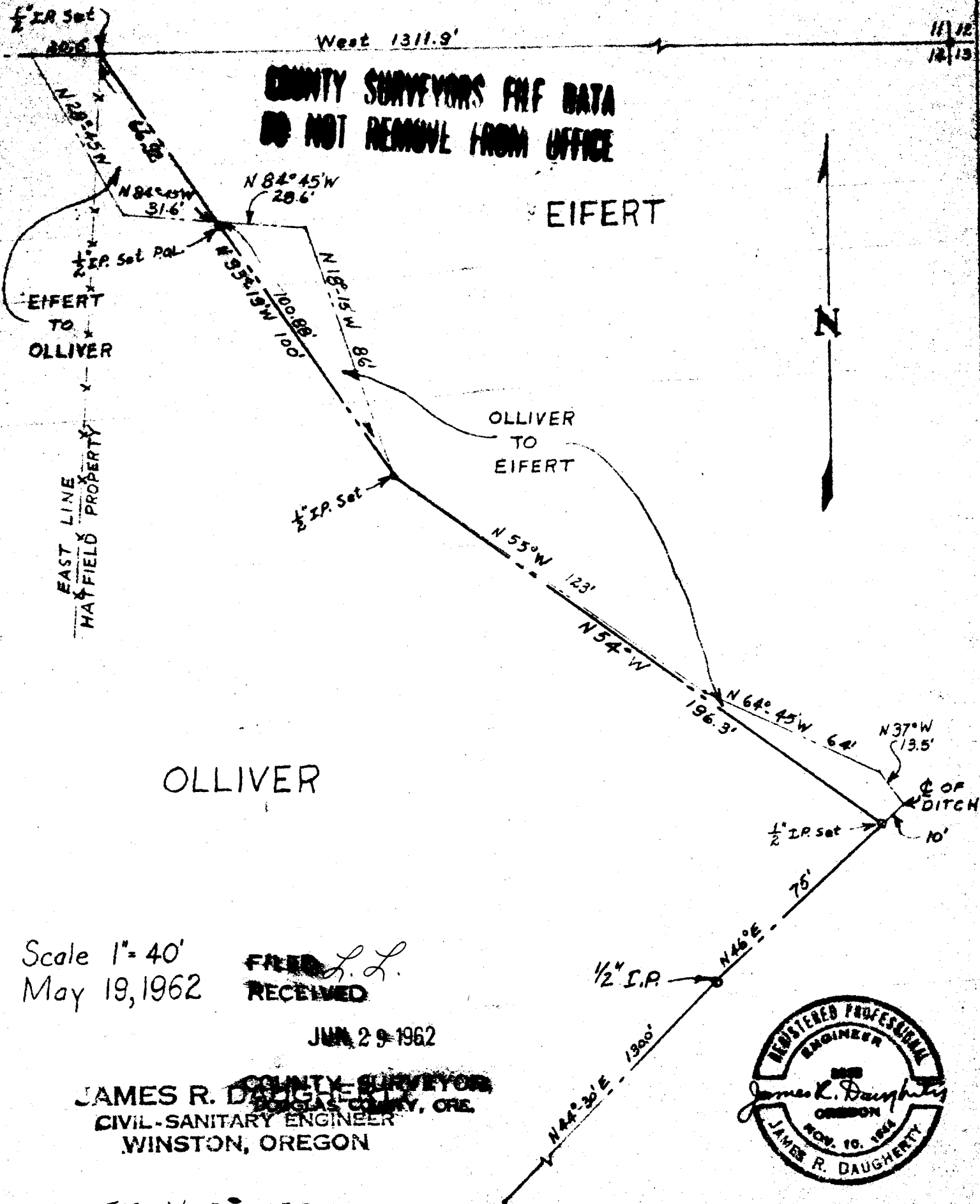
SECTION 14, T27S, R4W, W.M. DOUGLAS COUNTY, OREGON

West 1311.9'

11/12  
12/13

**COUNTY SURVEYORS FILE DATA  
DO NOT REMOVE FROM OFFICE**

EIFERT

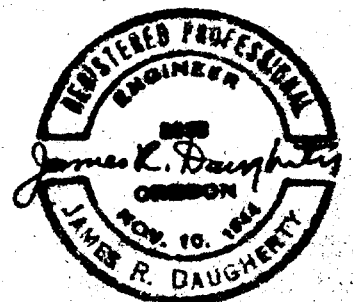


Scale 1" = 40'  
May 19, 1962

**FILED**  
*L. L.*  
**RECEIVED**

JUN 29 1962

**JAMES R. DAUGHERTY**  
COUNTY SURVEYOR  
CIVIL-SANITARY ENGINEER  
DOUGLAS COUNTY, ORE.  
WINSTON, OREGON



FOR W. OLLIVER