

# GUNDERSON PARCELS - PILGER ST - ROSEBURG



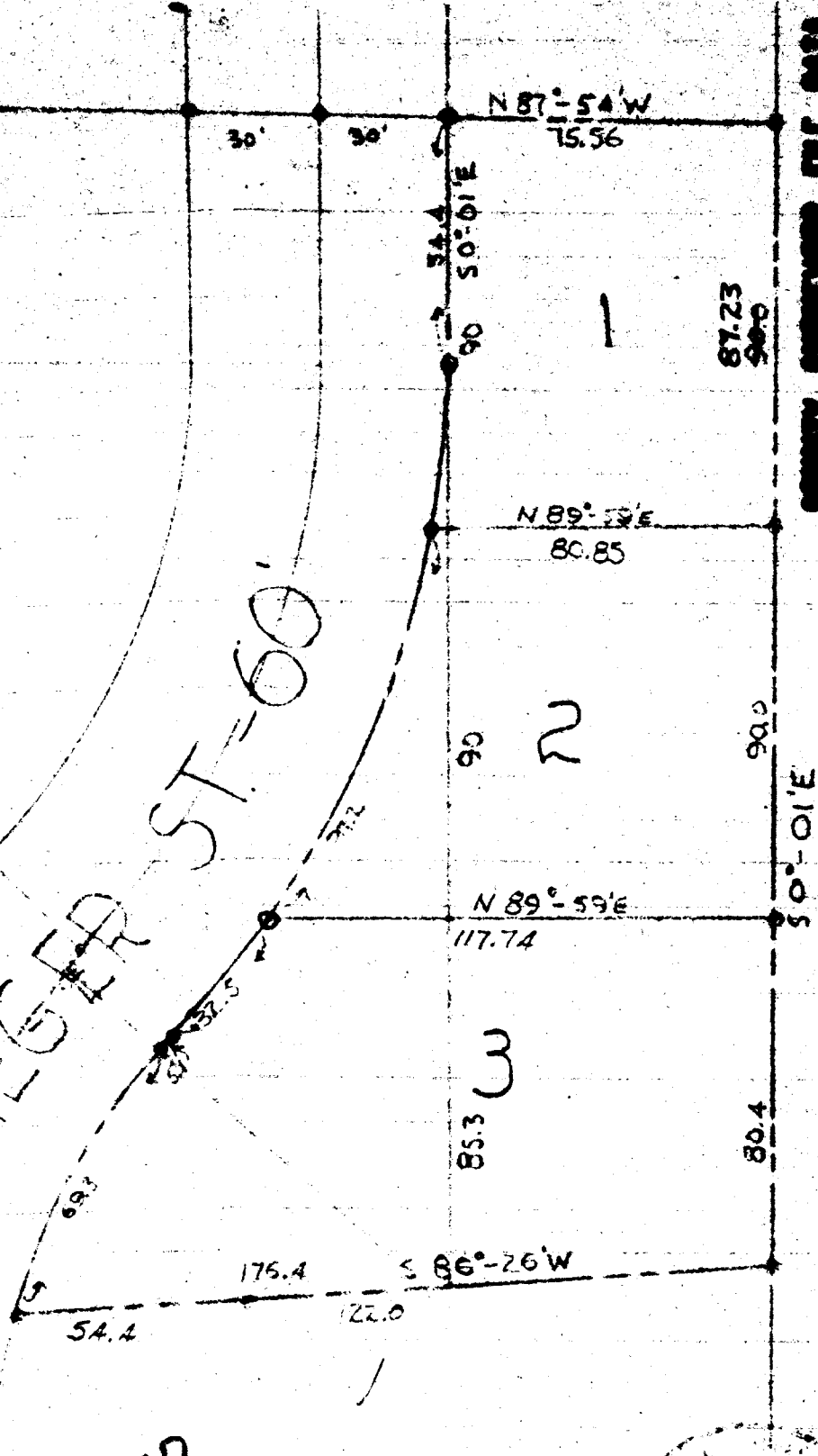
FILED  
RECEIVED

MAY 24 1962

COUNTY SURVEYOR  
DOUGLAS COUNTY, ORE.

CRESTVIEW  
AVE. - 60'

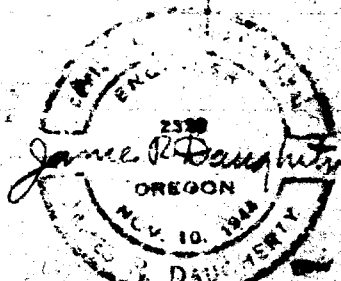
PILGER ST. = 60'



COUNTY SURVEYORS FILE DATA  
DO NOT REMOVE FROM COUNTY

AMENDED

JAMES R. DAUGHER  
SANITARY ENGINEER  
ROSEBURG, OREGON



Scale 1" = 40'  
May 17, 1962

30' 30'

SEE M.L.P.  
VOL 1, PG. 4