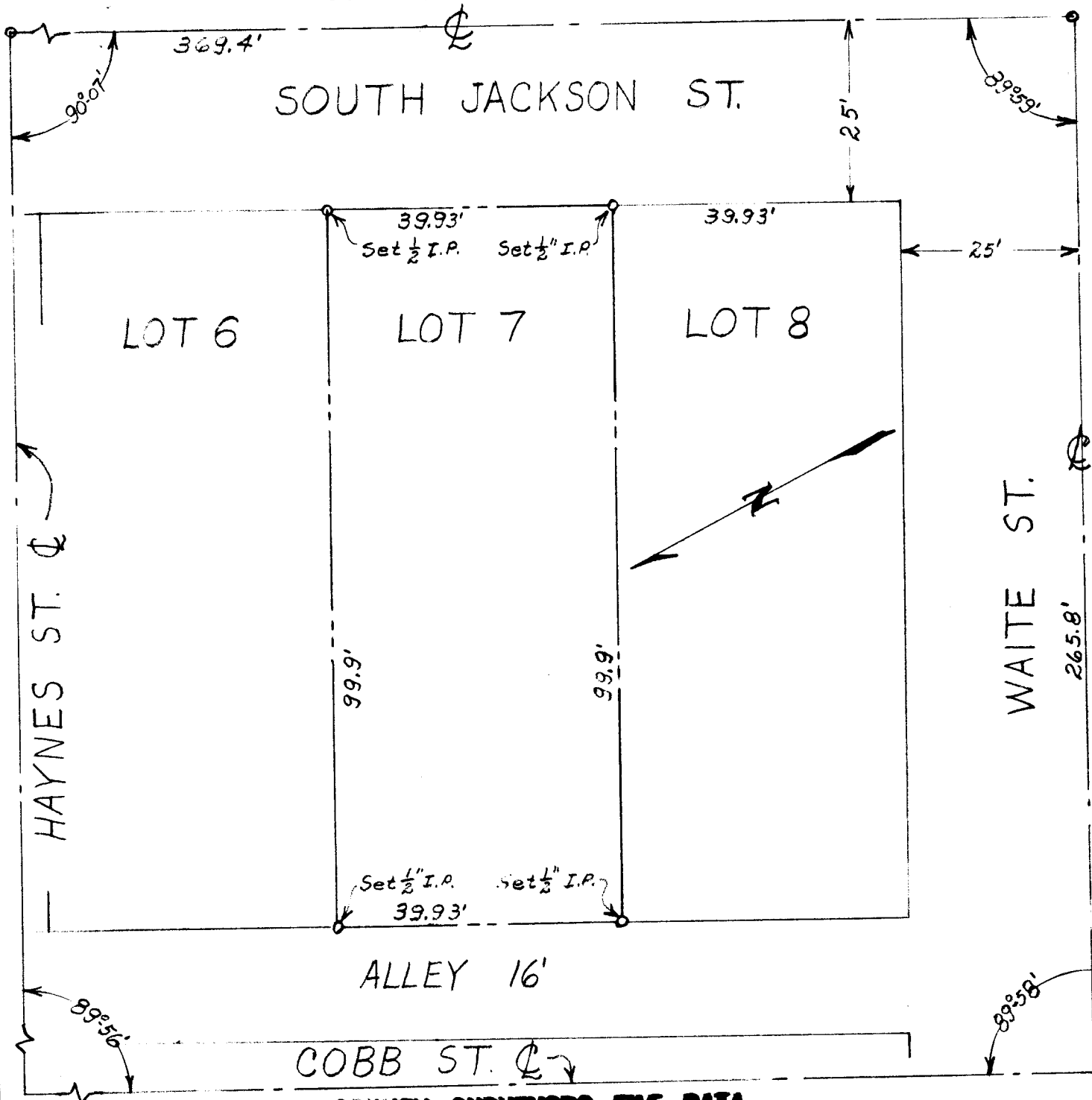


# LOT 7 BLOCK 8 WAITS ADDITION ROSEBURG

DOUGLAS COUNTY OREGON

EDWARD BISHOP



FILED  
RECEIVED

MAY 7 1962

COUNTY SURVEYOR  
DOUGLAS COUNTY, ORE.

Scale 1"=20'  
May 3, 1962

**COUNTY SURVEYORS FILE DATA  
DO NOT REMOVE FROM OFFICE**

SURVEYED BY  
**JAMES R. DAUGHERTY**  
CIVIL-SANITARY ENGINEER  
WINSTON, OREGON

