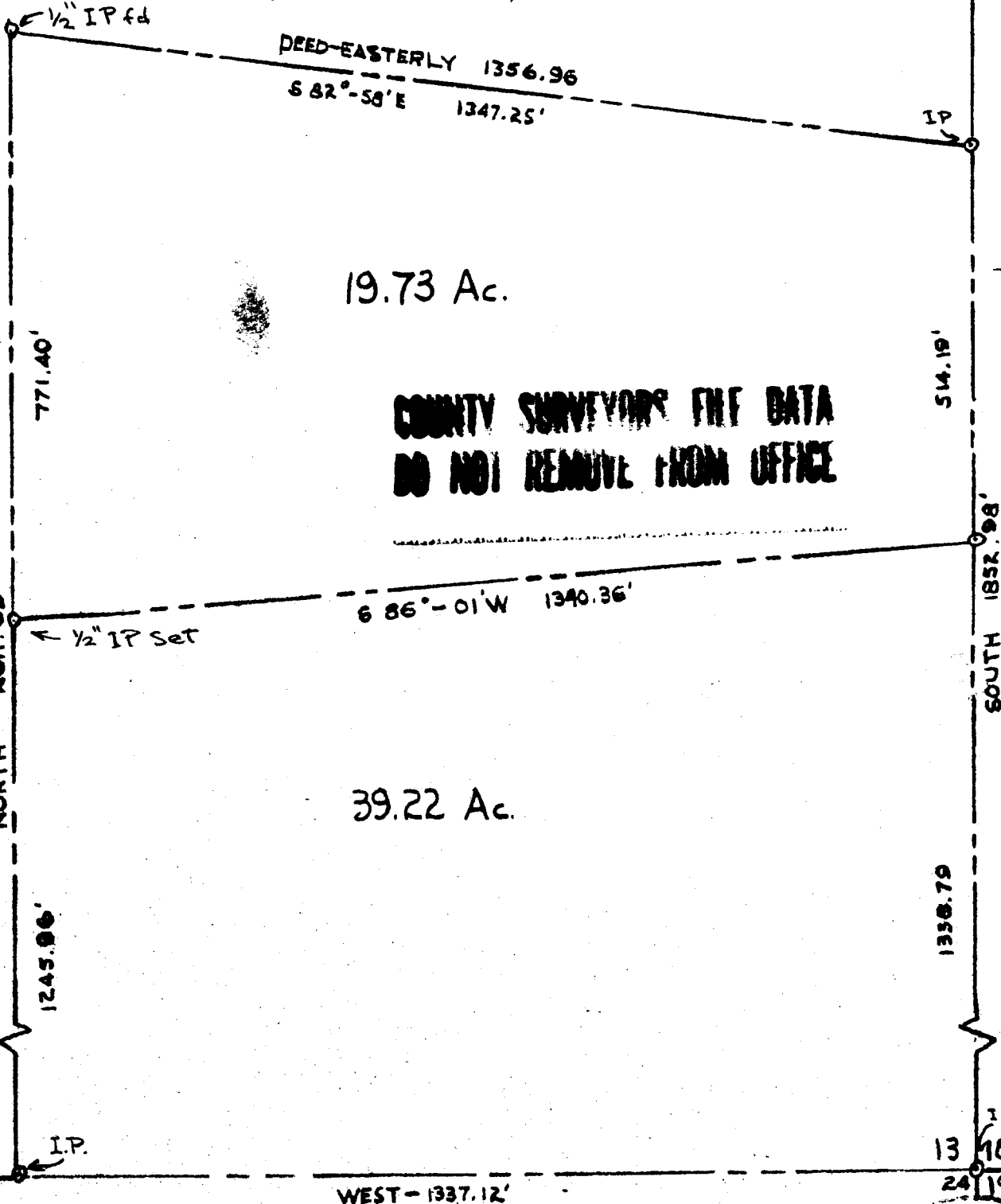


CHRIS F. WULFF PARCELS • SECT. 13 • T27S • R7W • WM.

DOUGLAS COUNTY, OREGON



19.73 Ac.

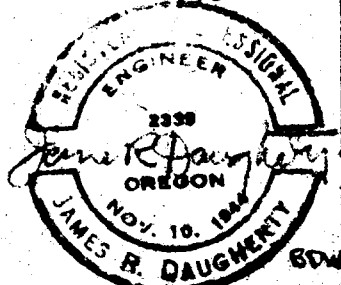
COUNTY SURVEYORS FILE DATA
DO NOT REMOVE FROM OFFICE

39.22 Ac.

CRITZER ROAD

Scale 1" = 200'
March 30, 1962

FILED
JAMES R. DAUGHERTY
CIVIL-SANITARY ENGINEER
WINSTON, OREGON APR 3 1962



COUNTY SURVEYOR
DOUGLAS COUNTY, ORE.

S. File No. 51/232-24