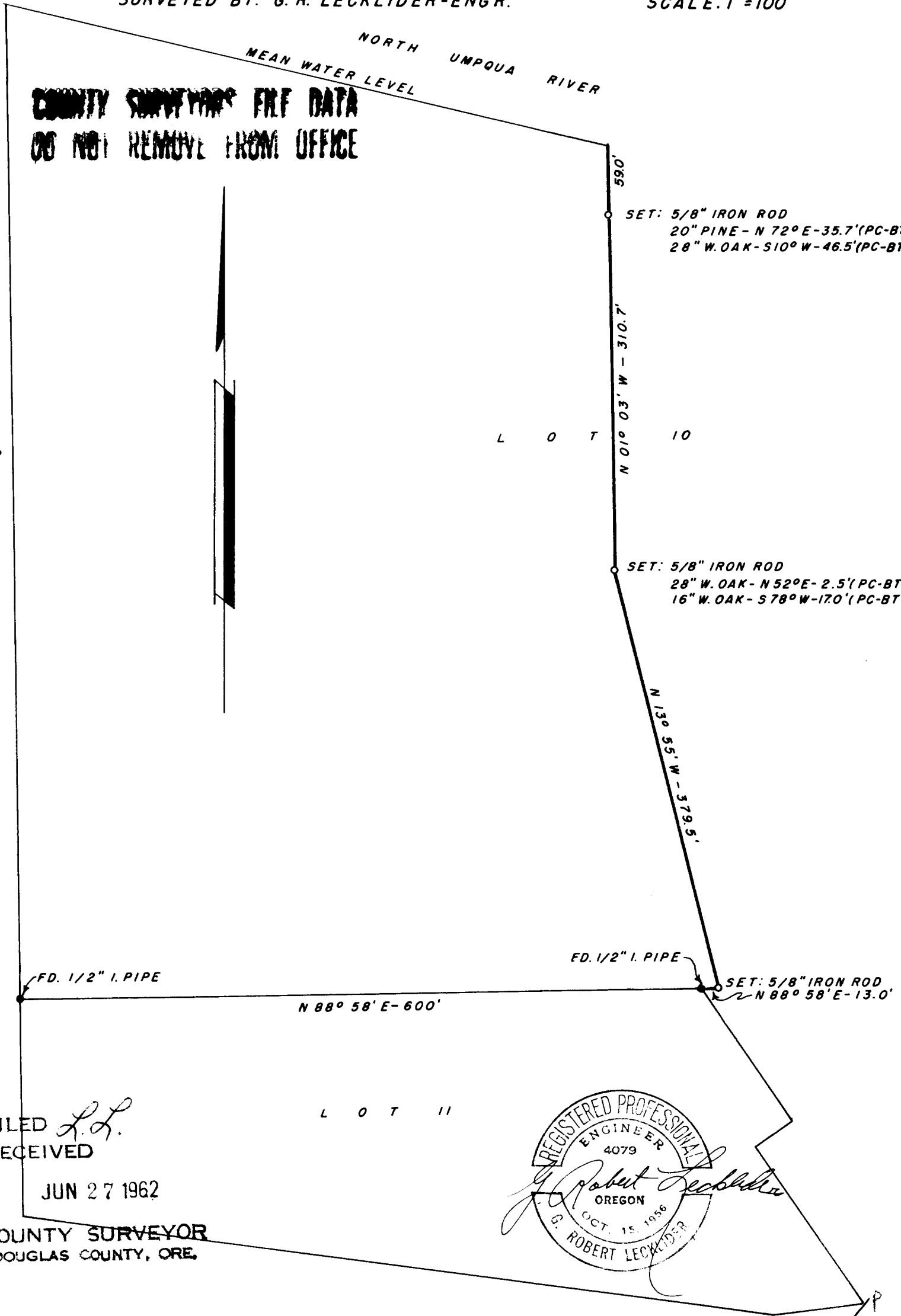


SURVEY IN LOT 10, PLAT "D", N. CURRY ESTATE

IN SECTION 32, T 26 S, R 6 W, W.M.

SURVEYED FOR: DONALD S. KELLEY
SURVEYED BY: G. R. LECKLIDER-ENGR.

JUNE, 1962
SCALE: 1"=100'



**COUNTY SURVEYOR'S FILE DATA
DO NOT REMOVE FROM OFFICE**

SET: 5/8" IRON ROD
20" PINE - N 72° E - 35.7' (PC-BT)
28" W. OAK - S 10° W - 46.5' (PC-BT)

SET: 5/8" IRON ROD
28" W. OAK - N 52° E - 2.5' (PC-BT)
16" W. OAK - S 78° W - 170' (PC-BT)

FD. 1/2" I. PIPE SET: 5/8" IRON ROD
N 88° 58' E - 13.0'

FILED *L.L.*
RECEIVED

JUN 27 1962

COUNTY SURVEYOR
DOUGLAS COUNTY, ORE.

