

COUNTY SURVEYORS' FILE DATA
DO NOT REMOVE FROM OFFICE

SURVEY IN

W 1/2 NE 1/4, SEC. 17, T.29S., R.7W., W.M.

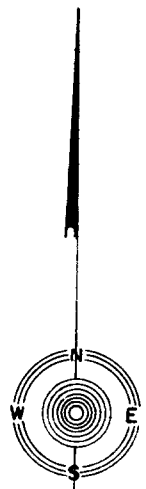
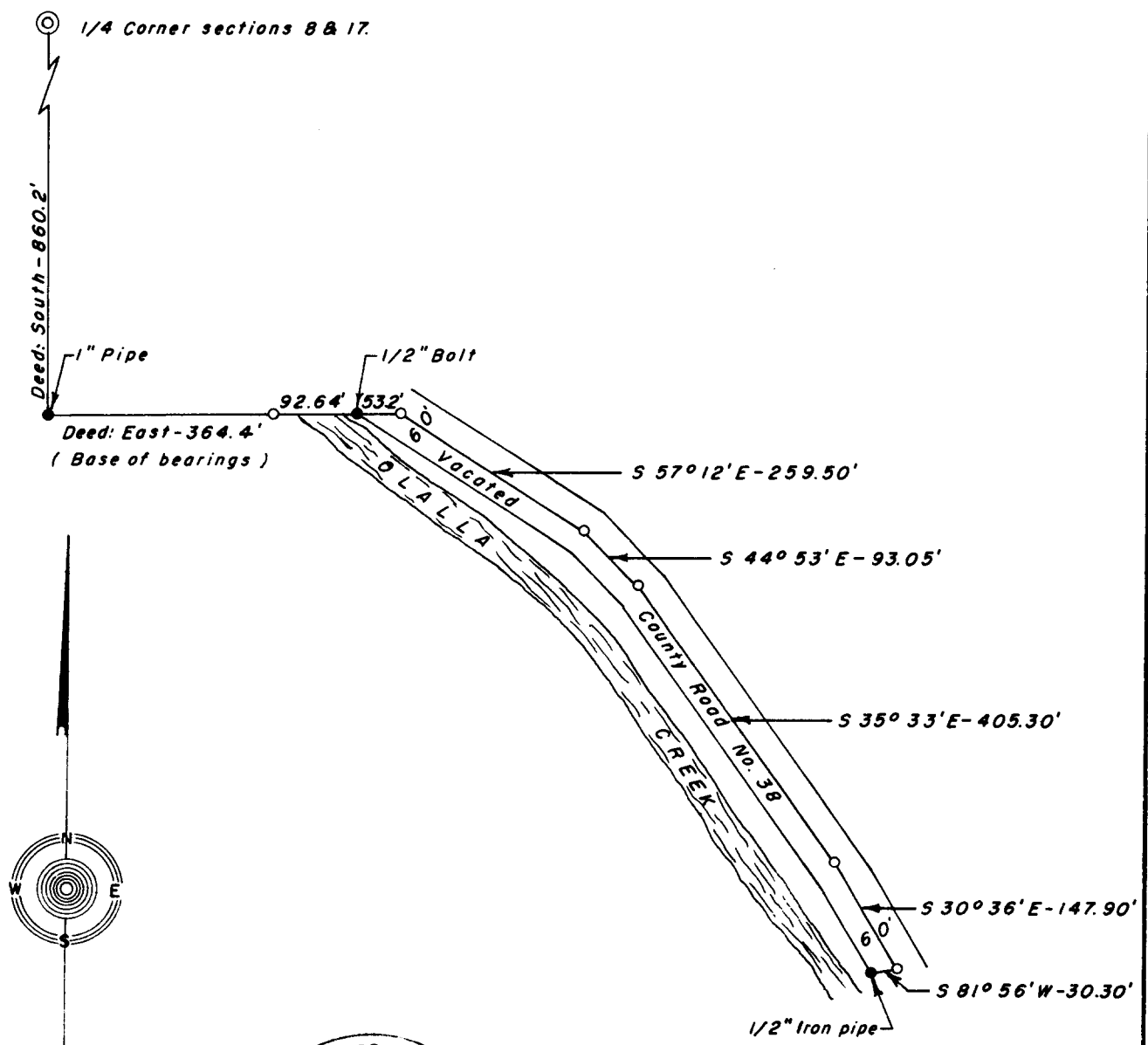
SURVEYED FOR: IRVIN H. WAMBOLT

APRIL, 1962

SURVEYED BY: G. R. LECKLIDER-ENG'R.

SCALE: 1" = 200'

- DENOTES MONUMENTS FOUND AS CALLED FOR IN DEEDS INST. No's. 72272 & 72273.
- DENOTES 5/8" X 36" IRON RODS SET.



FILED *L.L.*
RECEIVED

APR 23 1962

COUNTY SURVEYOR
DOUGLAS COUNTY, ORE.

