

COUNTY SURVEYOR'S OFFICE DATA
 DO NOT REMOVE FROM FILE

T. 21 S. R. 12 W. NW SW 1/4 Sec. 35
 SURVEY OF LOT 6, BLOCK 75, AMENDED PLAT
 OF RAILROAD ADDITION TO THE CITY OF REEDSPOND
 DOUGLAS COUNTY, OREGON

For: GEORGE MELVILLE

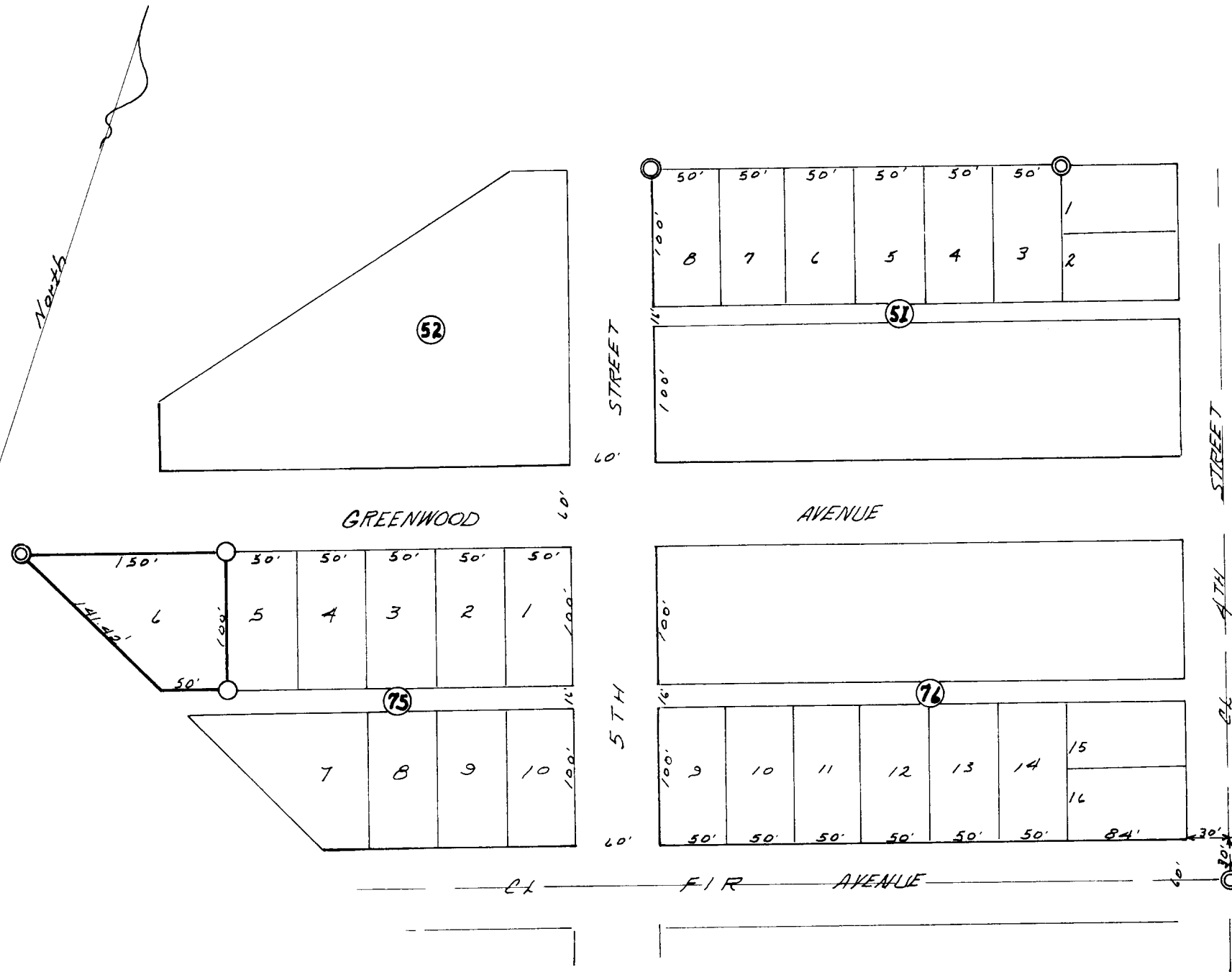
Scale: 1" = 100'

January 24, 1962

Corners found: \odot

Corners set: \circ 3/4" Iron pipe

Warren D. ...



FILED
 RECEIVED

FEB 2 1962

COUNTY SURVEYOR
 DOUGLAS COUNTY, ORE.

51/228-5