

FILED *L.L.*
RECEIVED

FEB 2 1962

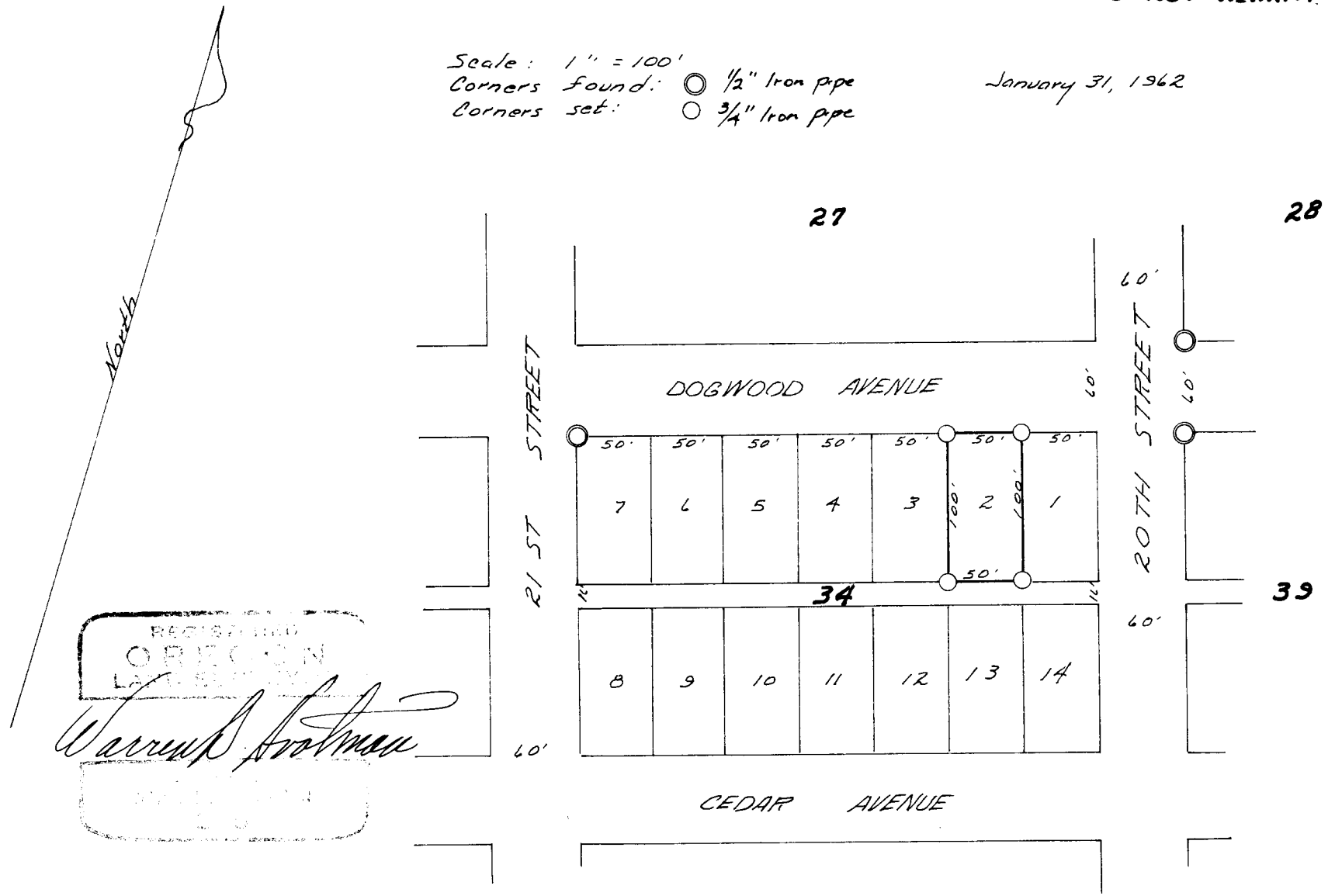
COUNTY SURVEYOR
DOUGLAS COUNTY, ORE.

T. 22 S. R. 12 W. NW 1/4 Sec. 3
SURVEY OF LOT 2, BLOCK 34,
REEDSPORT ADDITION TO REEDSPORT
DOUGLAS COUNTY, OREGON
for
RALPH PAULL

COUNTY SURVEYORS FILE DATA
DO NOT REMOVE FROM OFFICE

Scale: 1" = 100'
Corners found: \odot 1/2" Iron pipe
Corners set: \circ 3/4" Iron pipe

January 31, 1962



REGISTERED
OREGON
LAND SURVEYOR
Warren A. Holman
1962