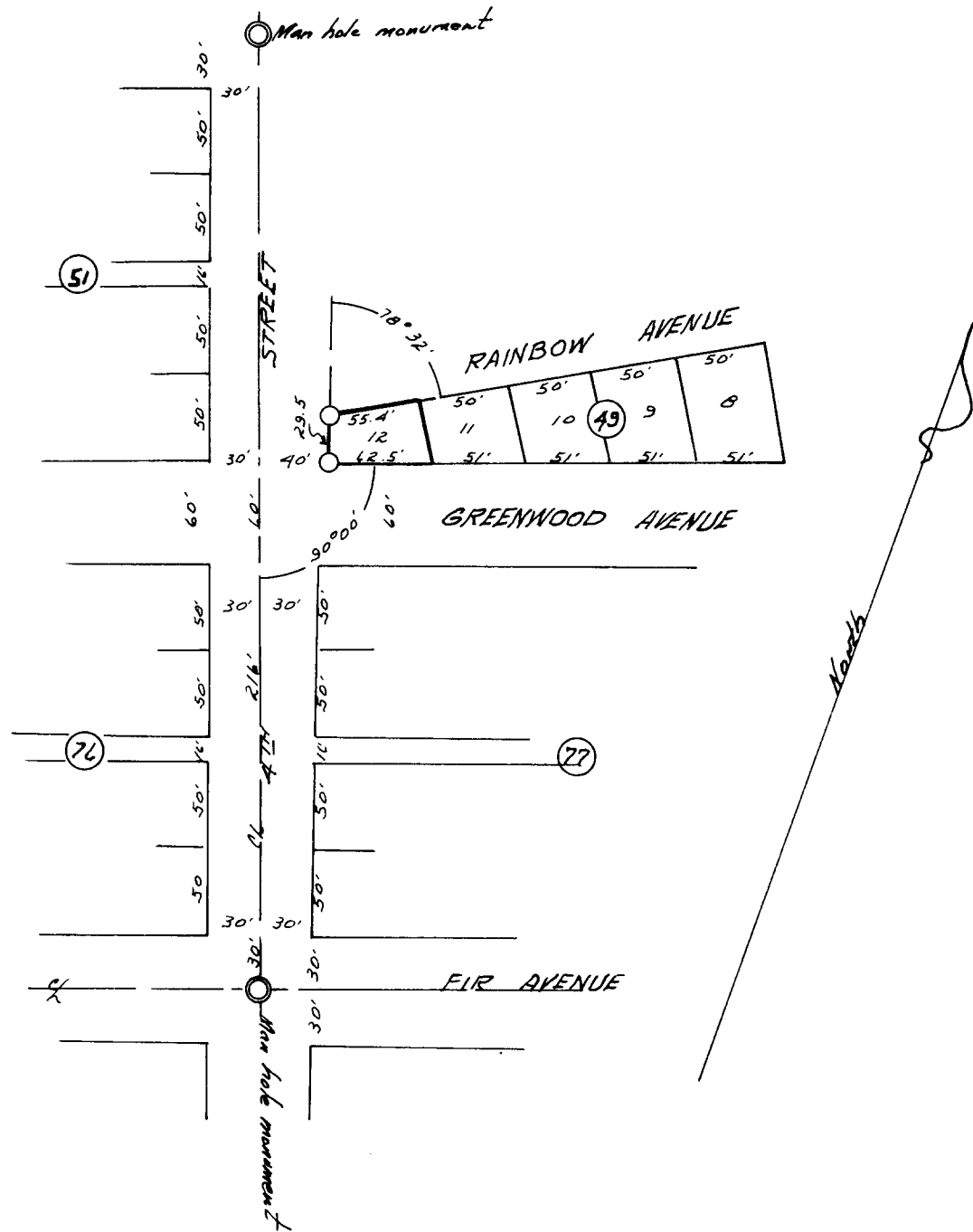


COUNTY SURVEYOR'S OFFICE
DO NOT REMOVE FROM OFFICE

T 21 S R 12 W NE SW 30.35

SURVEY OF LOT 12, BLOCK 49,
AMENDED PLAT OF RAILROAD ADDITION TO REEDSPORT,
DOUGLAS COUNTY, OREGON

for
SOREN BUUS



Scale: 1" = 100'

Corners found: man hole monuments.

Corners set: 3/4" iron pipe

October 14, 1961

January 19, 1962

Warren D. Axtman

FILED
RECEIVED

FEB 2 1962

COUNTY SURVEYOR
DOUGLAS COUNTY, ORE.