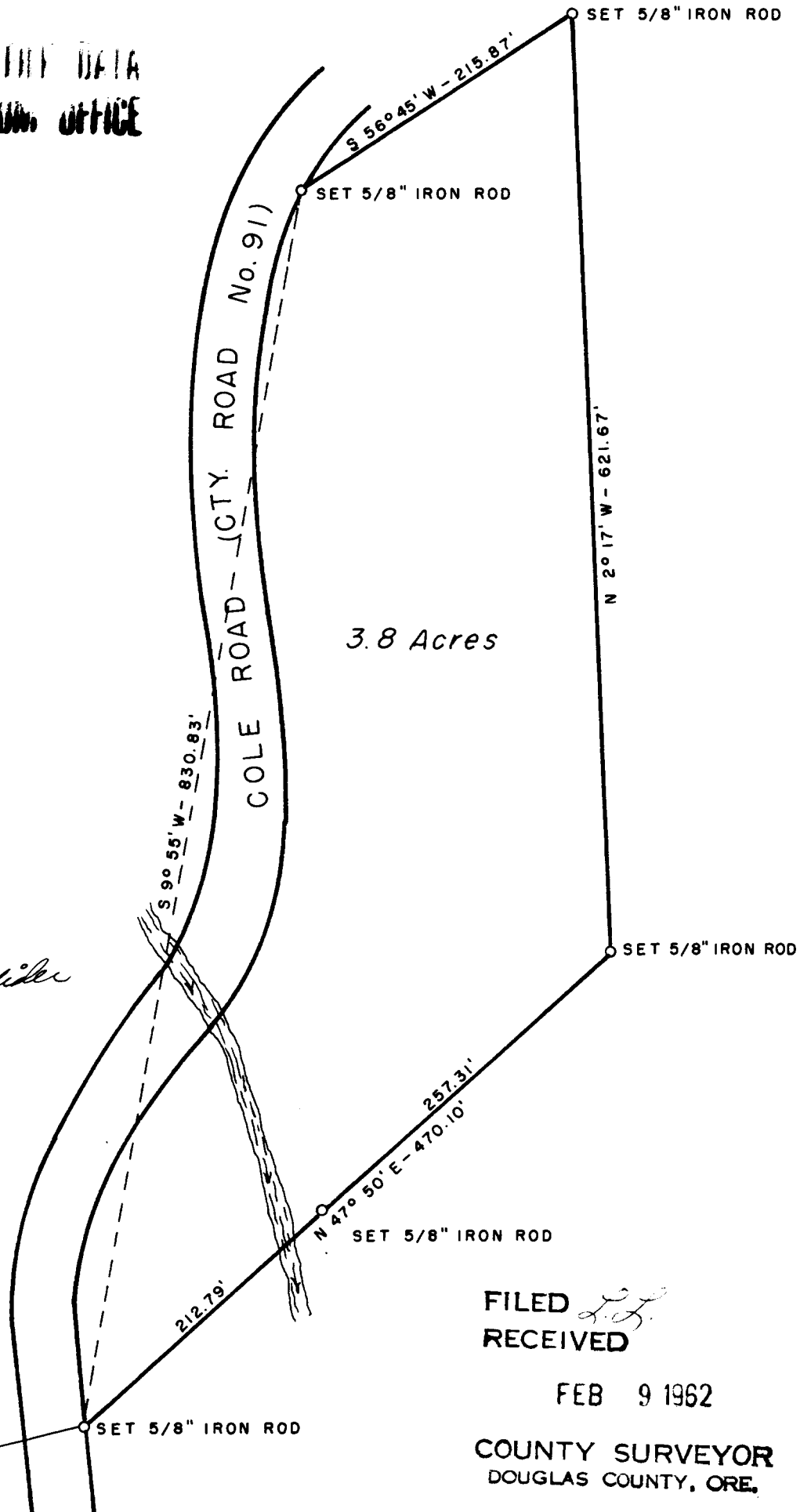
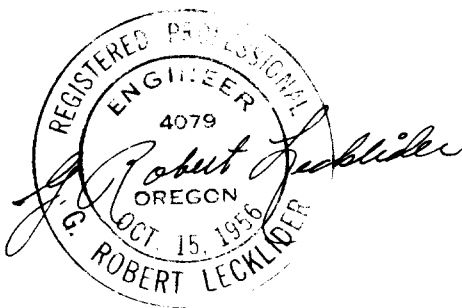


# METES AND BOUNDS SURVEY IN SEC. 17, T.25S., R.6W., W.M. DOUGLAS COUNTY, OREGON

SURVEYED FOR: R. F. BRADLEY & R. L. MYERS  
SURVEYED BY: G. R. LECKLIDER-ENGINEER

FEB., 1962  
SCALE: 1" = 100'

COUNTY SURVEYOR'S OFFICE DATA  
DO NOT REMOVE FROM OFFICE



FILED  
RECEIVED

FEB 9 1962

COUNTY SURVEYOR  
DOUGLAS COUNTY, ORE.

18 | 17  
19 | 20

C.S. File No. 51/225-2