

COUNTY SURVEYORS FILE DATA
DO NOT REMOVE FROM OFFICE

SURVEY IN LOT 6, BLOCK 1, SHENANDOAH ADDITION ROSEBURG, DOUGLAS COUNTY, OREGON

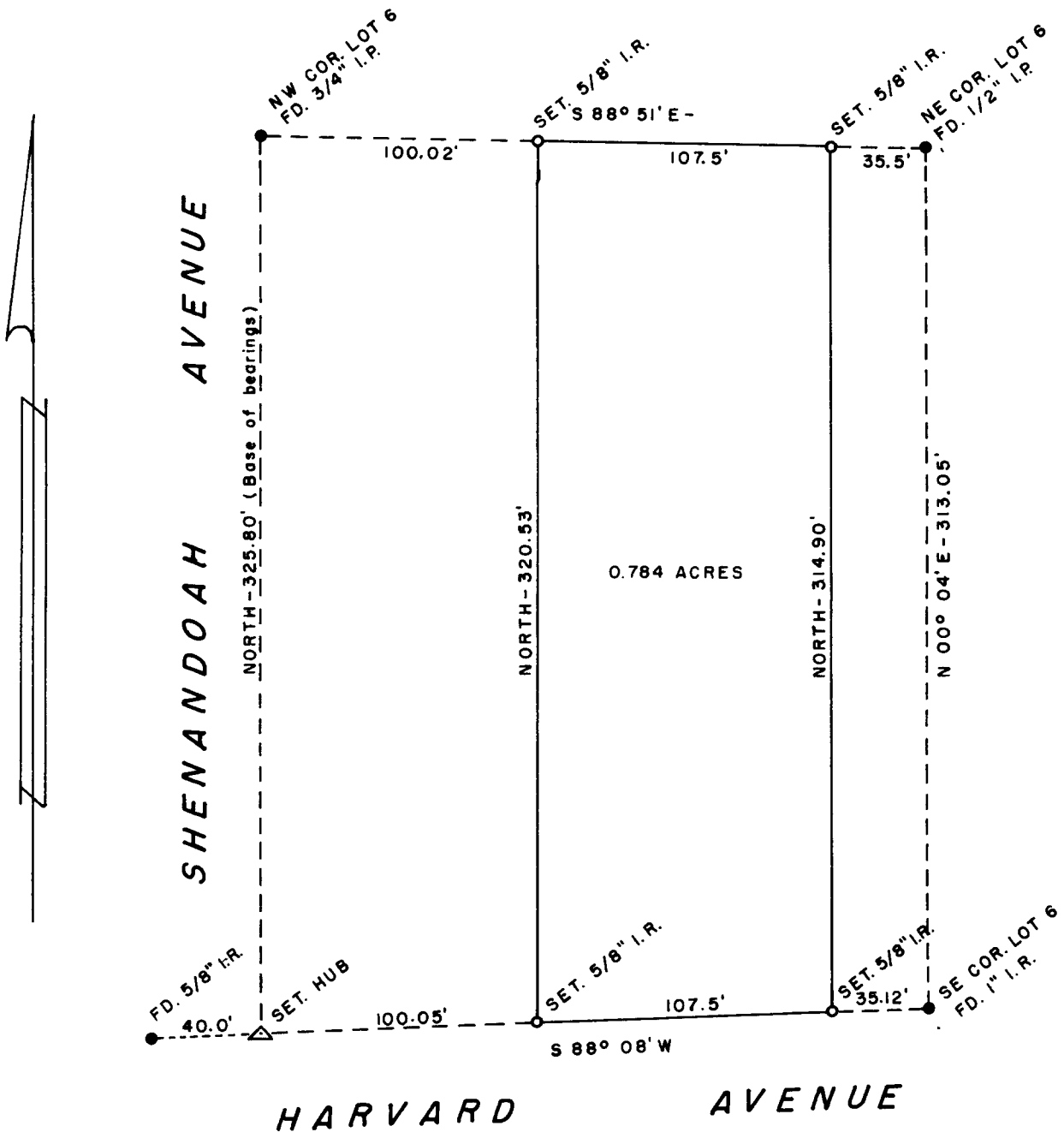
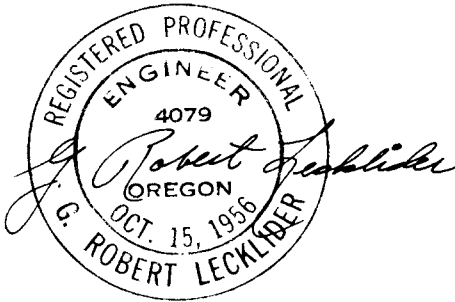
SURVEY TO ESTABLISH PROPERTY CORNERS
SURVEYED FOR: JAMES AND STRITZKE CONST. CO.
G. R. LECKLIDER-ENGINEER

JANUARY, 1962
SCALE: 1" = 60'

FILED *L.S.*
RECEIVED

JAN 10 1962

COUNTY SURVEYOR
DOUGLAS COUNTY, OREGON



C.S. File No. 51/225-1