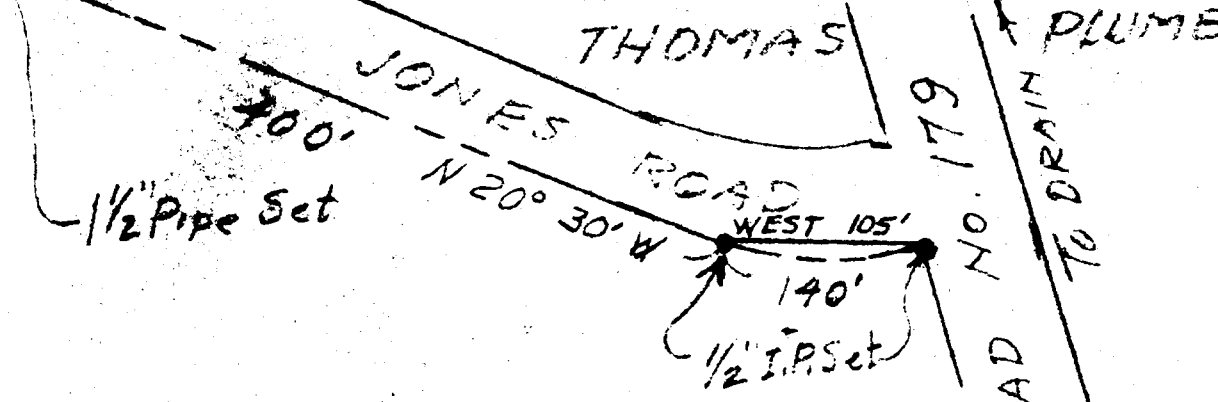


JOHN F. NEMETH PARCEL - SECTION 13 - T22S - R6W
DOUGLAS COUNTY - ORE.

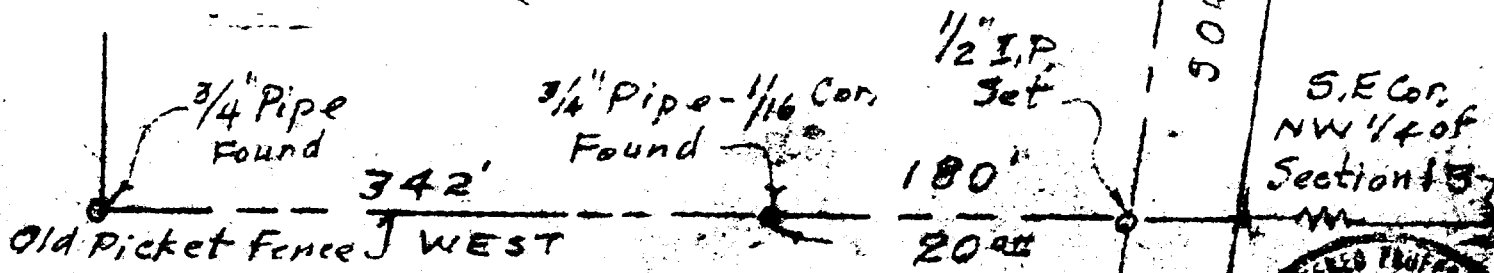


GLENN F. COLE
Fence Book 247 No. 202417
NORTH 869'

COUNTY SURVEYORS FILE DATA
DO NOT REMOVE FROM OFFICE
JOHN F. NEMETH
9.25 ACRES

FILED
RECEIVED
NOV 14 1961

COUNTY SURVEYOR
DOUGLAS COUNTY, ORE.



Scale 1" = 100'
Rev. Nov. 1961
MAY 20, 1961.

SURVEYED BY
JAMES R. DAUGHERTY
CIVIL-SANITARY ENGINEER
WINSTON - ORE.

