

FILED
RECEIVED

JAN - 3 1962

COUNTY SURVEYOR
DOUGLAS COUNTY, ORE.

COUNTY SURVEYOR'S OFFICE
DOUGLAS COUNTY, ORE.

SECT. 10, T21S R6W W.M.

for

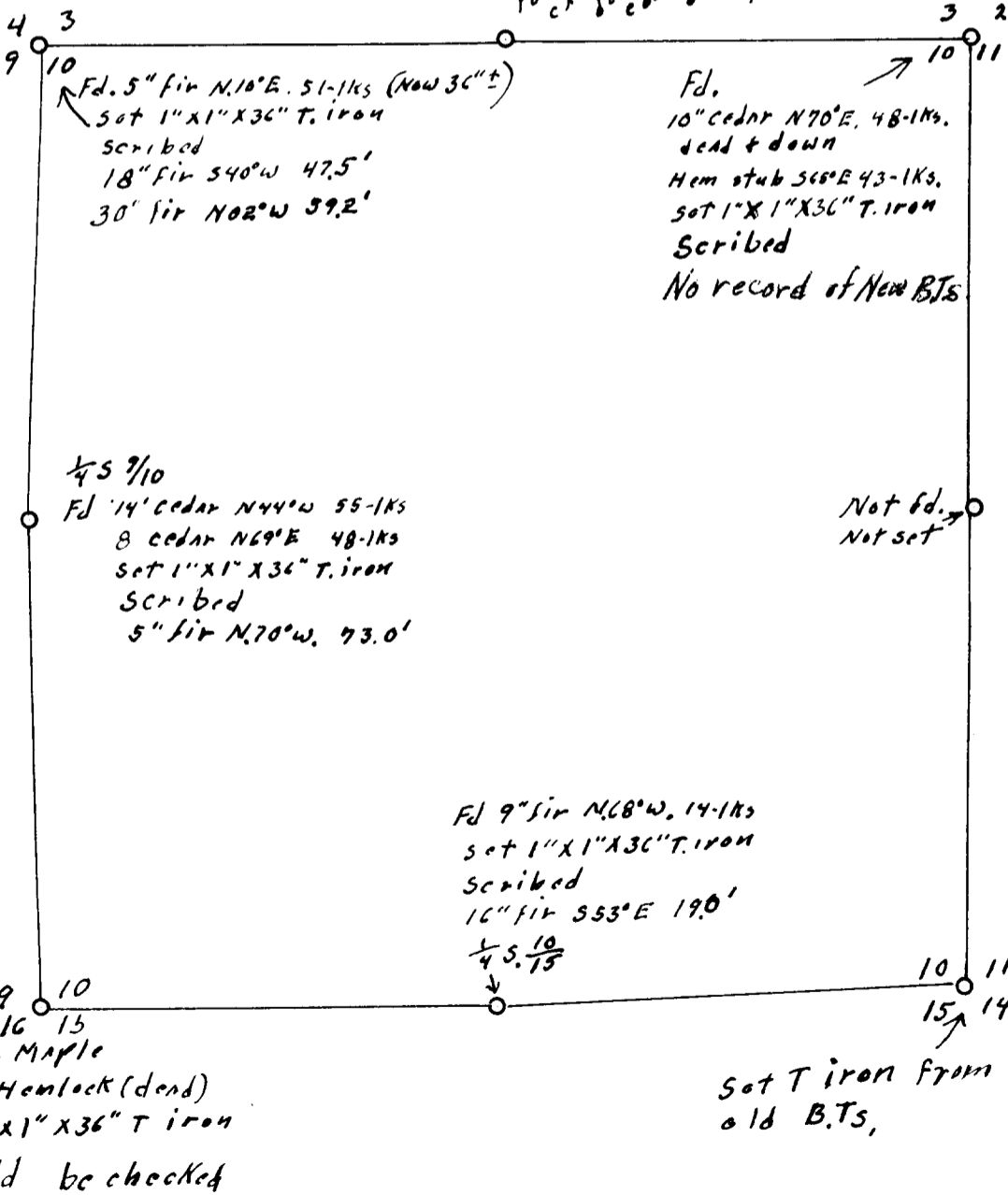
Woolley Logging Co

DRAIN, OREG.

Wilford N. Haines

Dec. 1961

$\frac{1}{4}$ S $\frac{3}{10}$
Fd. cedar tree down in
can't be seen. probably pulled
down in logging
could not determine
orig. position
Not set



51/222-1