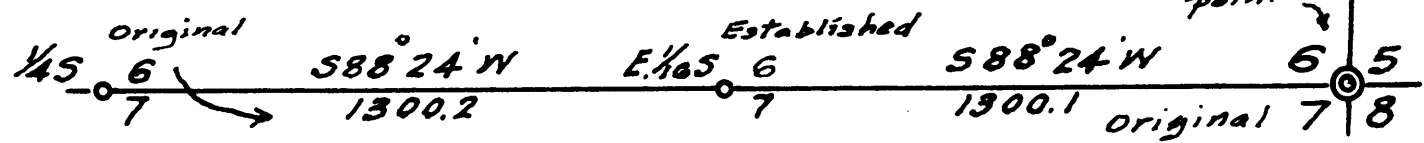
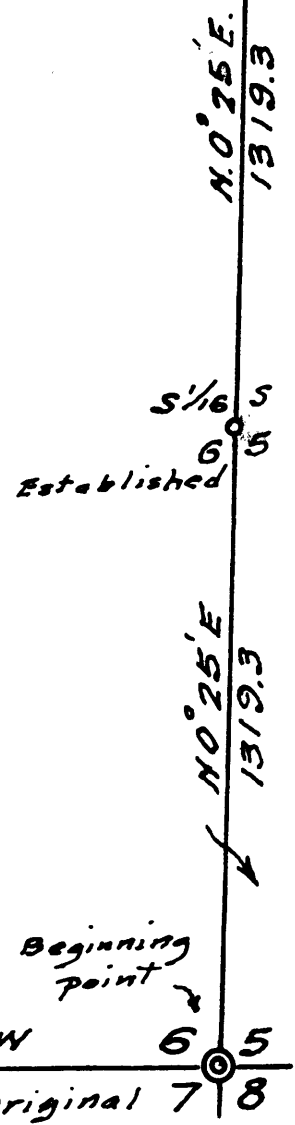


COUNTY SURVEYOR'S FILE DATA
DO NOT REMOVE FROM OFFICE

MAP

Showing lines run and blazed; corners found and corners established in the south 1/2 of section 6, T 25 S., R 2 W., W.M. scale 1" = 400' Dec. 1961



FILED L.L.
RECEIVED

Dec 19 1961

COUNTY SURVEYOR
DOUGLAS COUNTY, ORE.

U.H. Hasford

SURVEY OF SECTION 6

T. 25 S. R. 2 W., W.M.

BY V. W. HOSFORD, P. L. S. NO. 253

FOR EVANS PRODUCTS COMPANY

Preparatory to logging operations in that area, Evans Products Company sought to establish the boundaries of their properties in Section 6, T. 25 S., R. 2 W.

This survey was made by the method of running angular random lines between the various corners. A transit was used for measuring the angles, all of which were doubled. All distances were measured with a 300 ft. steel tape, and all vertical angles measured by the transit. Bearings were determined by solar observations. Magnetic variation is approximately $20^{\circ} 30'$ in this vicinity.

Beginning at the corner common to sections 5,6,7, and 8, which is a brass cap, 1951, beside the original corner stone. All four bearing trees are standing.

Thence I run $S:88^{\circ} 24'$ W. on true line between sections 6 and 7.

At 1300.1 ft., I established the E. $1/16$ S 6 and 7. At this point I drove a $1\frac{1}{2}$ inch iron pipe, 30 inches long, 24 inches in the ground, from which;

A hemlock 10" in diam. bears $S. 54\frac{3}{4}^{\circ} W. 36.0$ ft.
Marked E. $1/16$ S. 7 253 B. T.

A Chinquapin 10" in diam. bears $N. 55^{\circ} W. 18.5$ ft.
Marked E. $1/16$ S. 6 253 B. T.

At 2600.3 ft. the $\frac{1}{4}$ corner common to sections 6 and 7. This corner is a brass cap, 1951, beside the original stone corner. The original hemlock bearing tree is living. The fir is a windfall. ✓

From the corner of sections 5,6,7, and 8, described above, I run $N.0^{\circ} 25'$ E. on true line between sections 5 and 6.

FILED
RECEIVED

DEC 13 1961

COUNTY SURVEYOR
DOUGLAS COUNTY, ORE.

C. S. File No. 51/2200

At 1319.3 ft. I established the S. 1/16 S. 5 and 6. At this point I drove a 1" iron pipe 30" long 24" in the ground, from which;

A hemlock 10" in diameter bears S. 41° E. 33.3 ft.
marked S. 1/16 S. 5 253 B. T.

A hemlock 24" in diameter bears N. 563/4° W. 50.0 ft.
marked S. 1/6 S. 6 253 B. T. ✓

At 2638.6 ft. the 1/4 corner common to sections 5 and 6. This corner is a brass cap, 1951, with original bearing trees.

From this corner I run S. 88° 49' W. on the true E. and W. center line of section 6. Steep ascent.

At 365 ft. a spur slopes N. E., then along steep north slope.

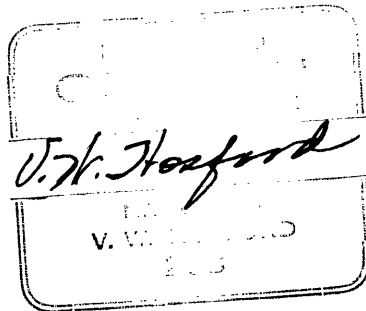
At 880 ft. a stream 2' wide flows N. 30° E., then moderate ascent on northerly slope.

At 3080 ft., begin gradual descent on steep north slope.

At 3620 ft. a stream 2' wide flows N. 20° E., begin steep ascent.

At 4484.4 ft. the W. 1/4 corner of section 6. This 1/4 corner is a brass cap established in 1943. The hemlock B. T. is dead, the fir is living.

12/19/61



FILED
RECEIVED

DEC 10 1961

COUNTY SURVEYOR
DOUGLAS COUNTY, ORE.