

FARCELIN LOTS, GLEN D HART TRACT

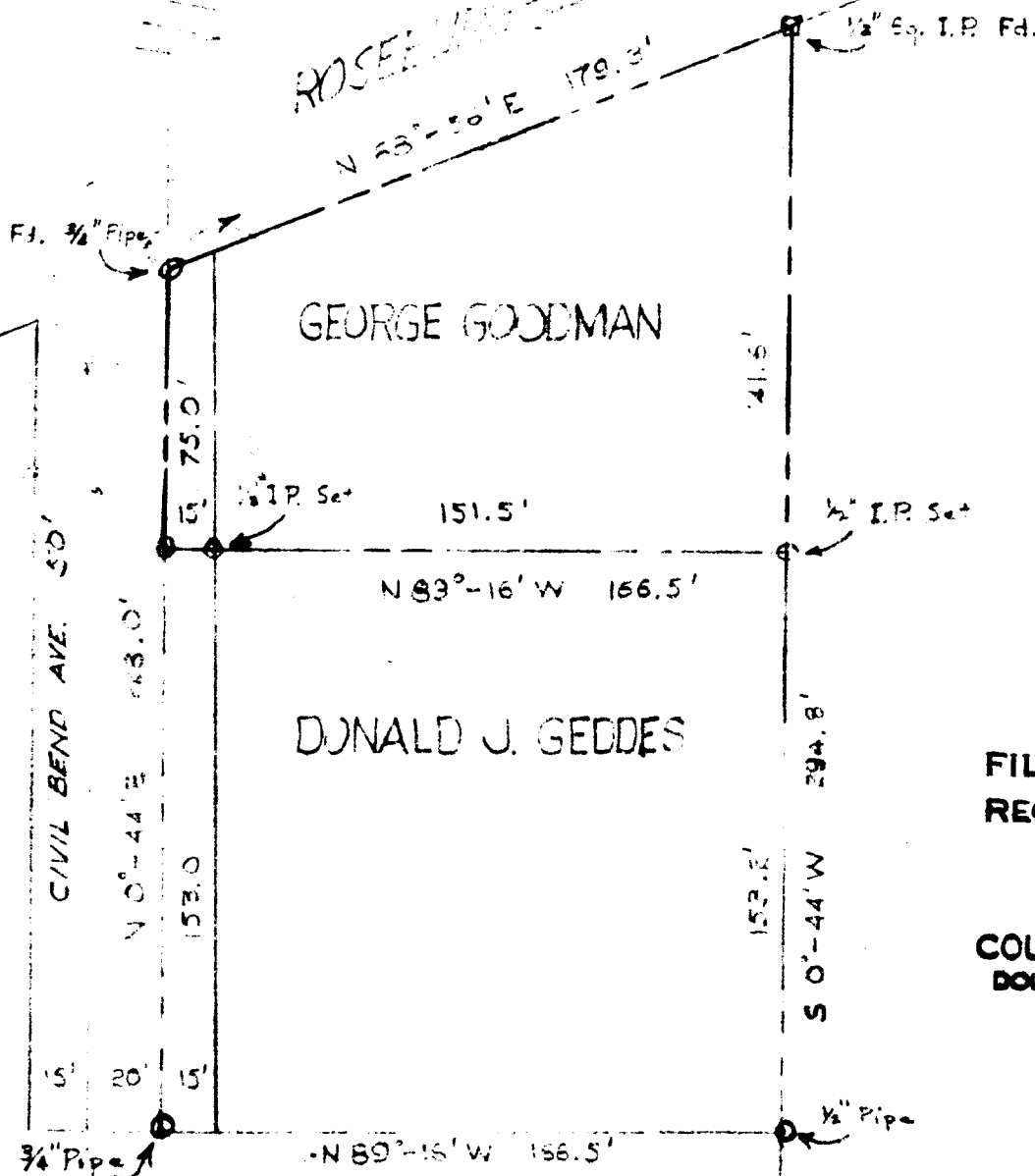
CITY OF WINSTON
DOUGLAS CO. ORE.

DONALD J. GEDDES

**COUNTY SURVEYORS FILE DATA
DO NOT REMOVE FROM OFFICE**

17.16 EAST
27.28

ROSEBERRY DRIVE - 84' HWY. SET. 12



FILED
RECEIVED

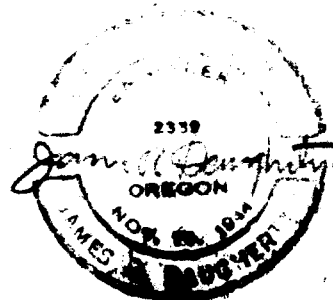
MAR 12 1962

COUNTY SURVEYOR
DOUGLAS COUNTY, ORE.

LOT 5

Surveyed By

JAMES R. DAUGHERTY
CIVIL-SANITARY ENGINEER
WINSTON, OREGON



Scale 1" = 50'

March 9, 1962

T28-6 S. 21 SE NW 1/4

60W

C.S. File No. 51/217-