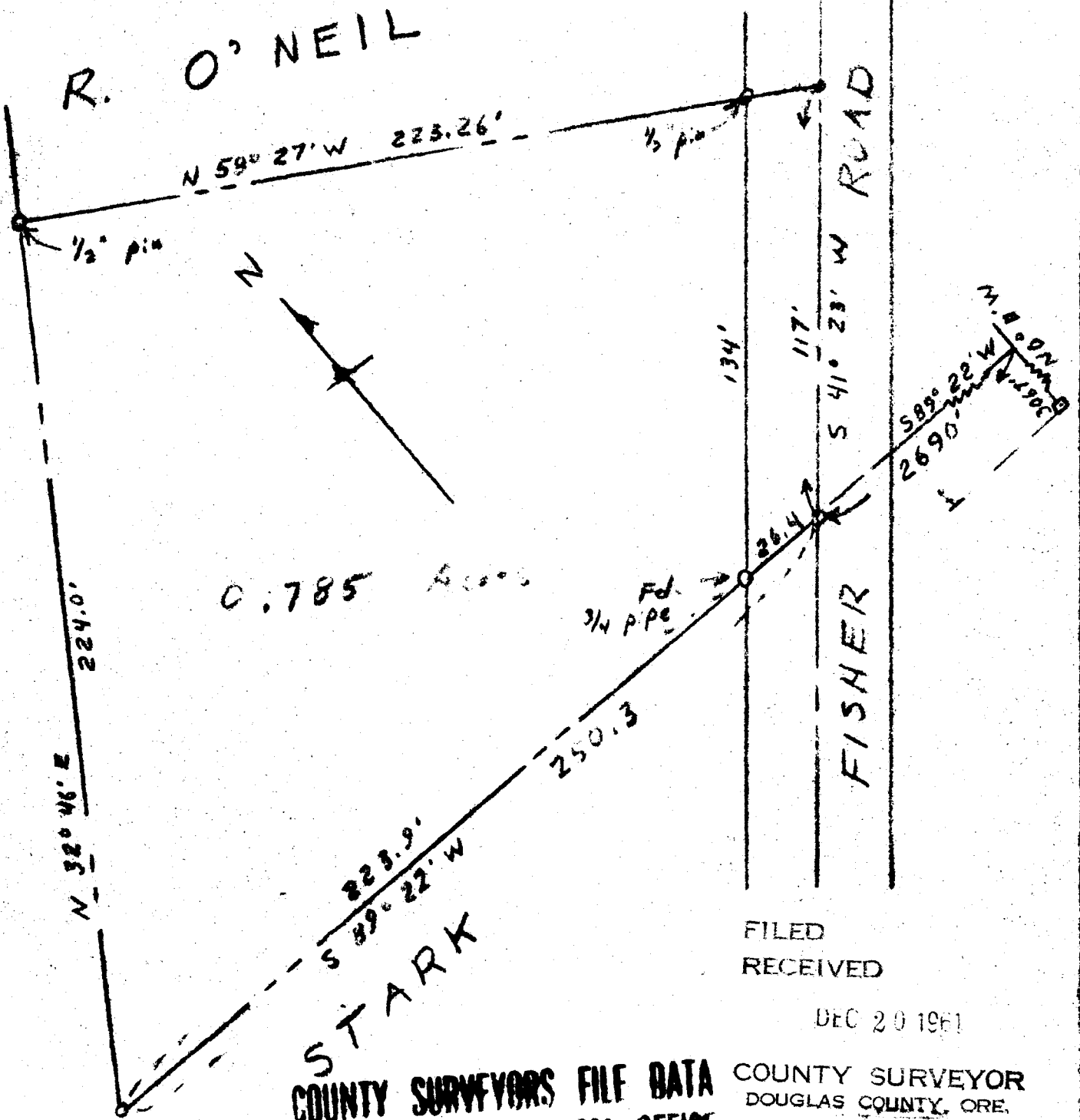


ROBERT CARLISLE PARCEL IN JAS. MCKINNEY
D.L.C. 47-T265-R6W-W.M. S. 27 NE 1/4

R. O'NEIL

N. UMPQUA RIVER

N. UMPQUA RIVER



0.785 Acres

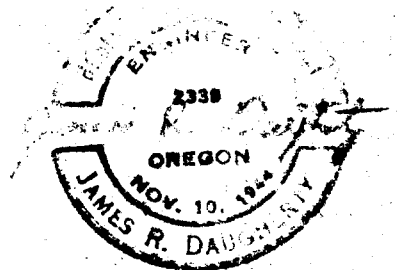
STARK
COUNTY SURVEYORS FILE DATA
DO NOT REMOVE FROM OFFICE

FILED
RECEIVED

DEC 20 1961

COUNTY SURVEYOR
DOUGLAS COUNTY, ORE.

MRS R. DAUGHERTY
CIVIL-SANITARY ENGINEER
WINSTON, OREGON



Scale 1"=40'

Dec. 17, 1961