

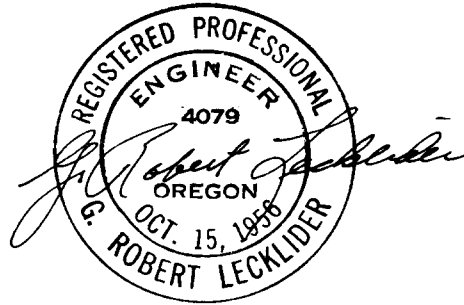
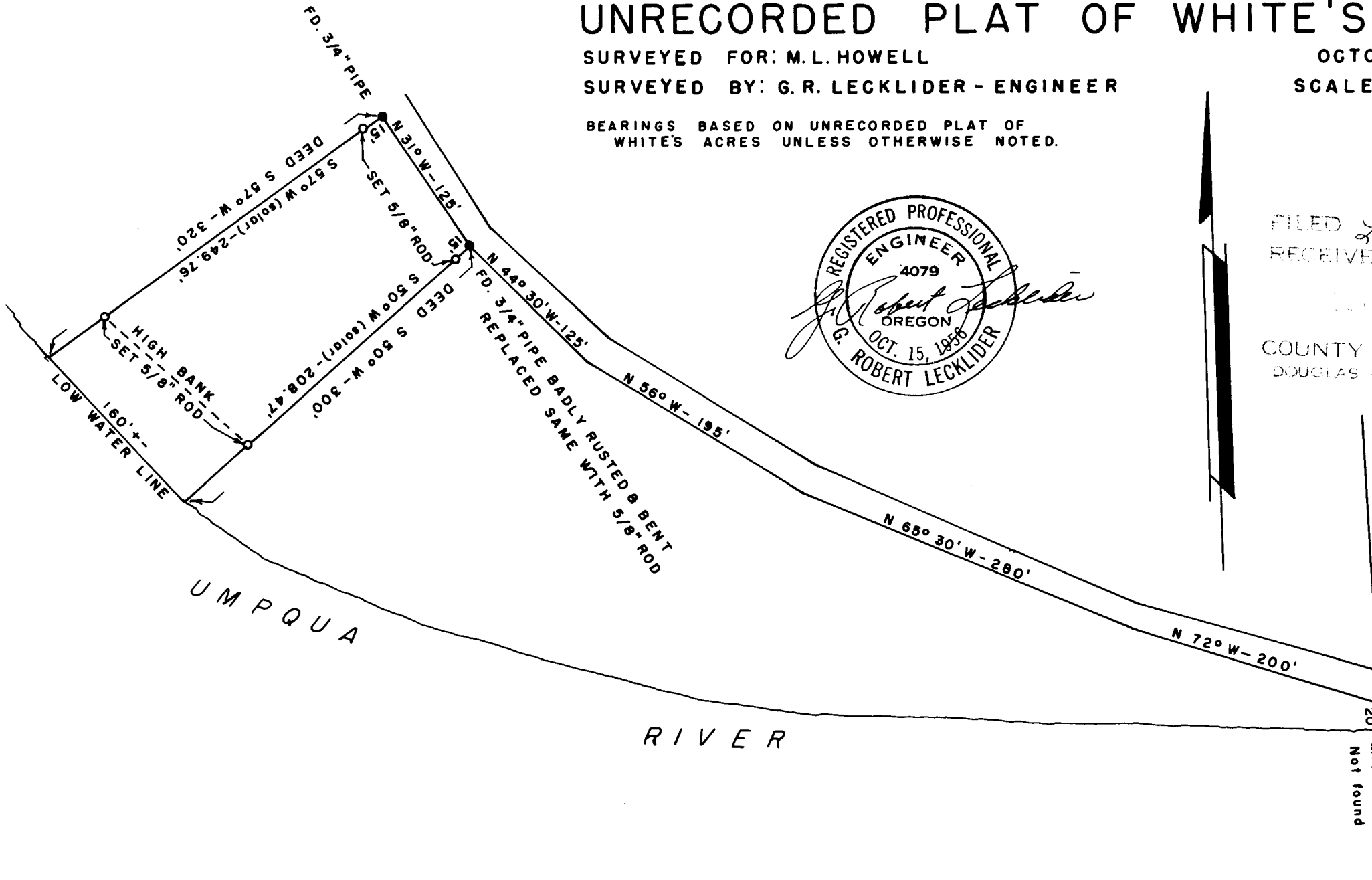
COUNTY SURVEYORS FILE DATA
DO NOT REMOVE FROM OFFICE

SURVEY IN SEC. 23, T.22 S., R.10 W., W.M. UNRECORDED PLAT OF WHITE'S AC.

SURVEYED FOR: M.L. HOWELL
SURVEYED BY: G.R. LECKLIDER - ENGINEER

OCTOBER, 1961
SCALE: 1" = 100'

BEARINGS BASED ON UNRECORDED PLAT OF
WHITE'S ACRES UNLESS OTHERWISE NOTED.



FILED *L.L.*
RECEIVED

COUNTY SURVEYOR
DOUGLAS COUNTY, ORE.