

COUNTY SURVEYORS FILE DATA

DO NOT REMOVE FROM OFFICE

SURVEY IN LOTS 3 & 4, BLK. 51,
KINNEY'S IMPROVED PLAT
DOUGLAS COUNTY, OREGON

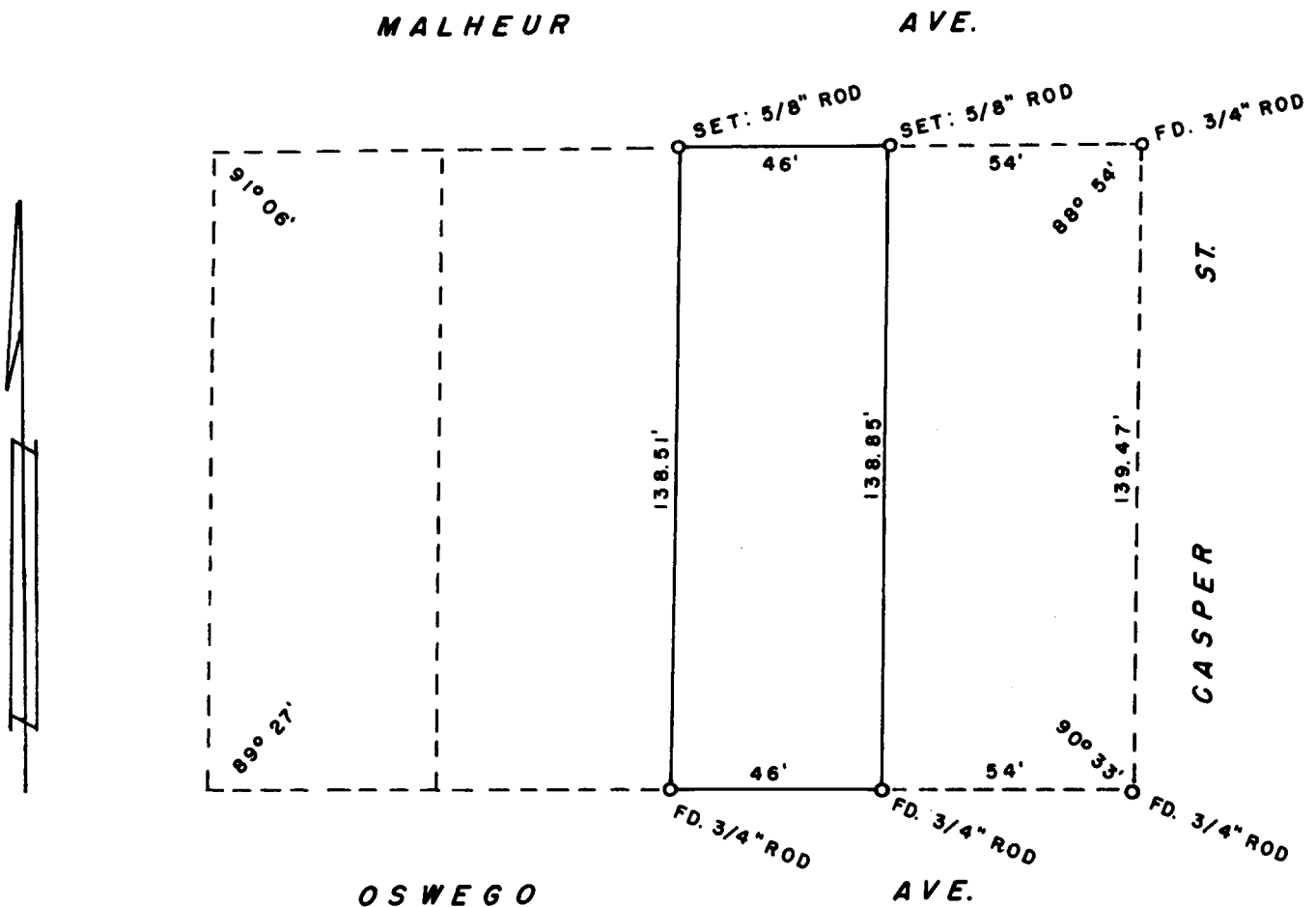
SURVEYED FOR: JOHN SWINEY

AUGUST, 1961

SURVEYED BY: G. R. LECKLIDER - ENGINEER

SCALE : 1" = 40'

NOTE: SURVEY BASED ON SURVEY BY PERCY ARMSTRONG AS PER CS FILE 40/91.



FILED

RECEIVED

L.L.
AUG 19 1961

COUNTY SURVEYOR
DOUGLAS COUNTY, ORE.