

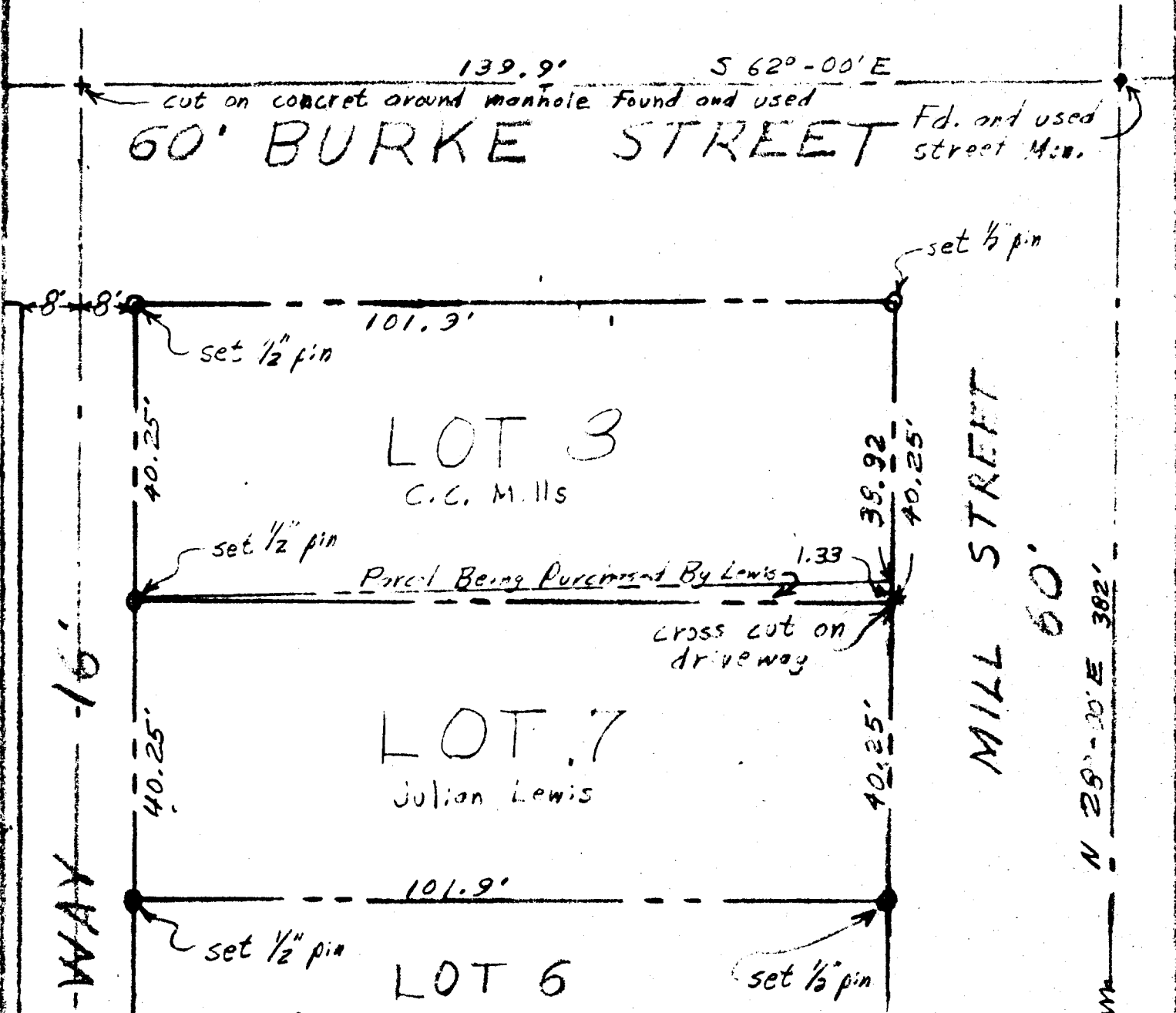
COUNTY SURVEYORS FILE DATA

DO NOT REMOVE FROM FILE

T. 27-6 Sec. 24

LOTS 7 & 8 BL. 90 3RD S. ADD. TO ROSEBURG

DOUGLAS COUNTY, OREGON - W.M.



JAMES R. DAUGHERTY
 CIVIL-SANITARY ENGR
 WINSTON, ORE.
 Mon. Fd. & Used
 S.E. RICE ST

FILED
 RECEIVED
 SEP 27 1961
 COUNTY SURVEYOR
 DOUGLAS COUNTY, ORE.

