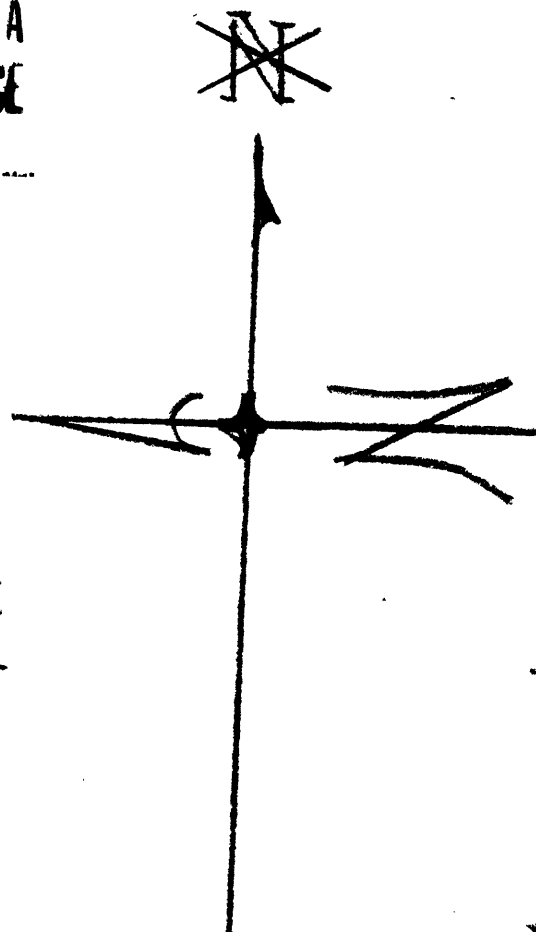
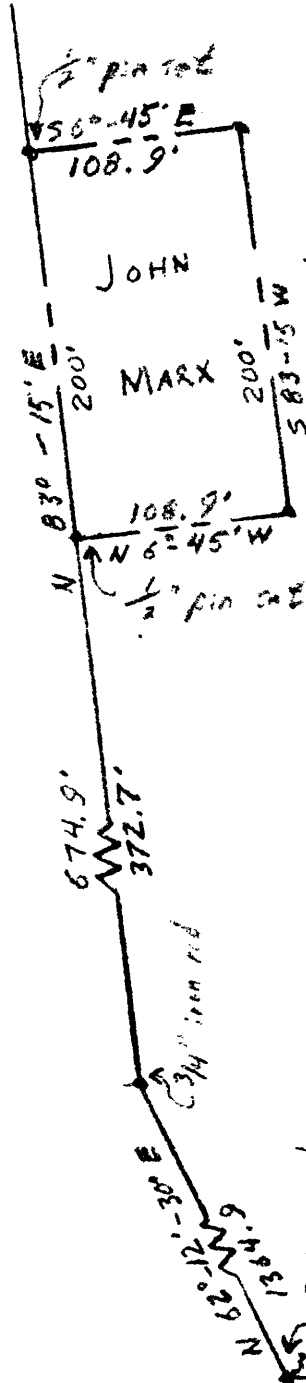


JOHN MARX PARCEL IN SEC. 6 T. 26 S. R. 6 W.
DOUGLAS COUNTY OREGON

COUNTY SURVEYORS FILE DATA
DO NOT REMOVE FROM OFFICE



ALFRED

Witness corner of the
S. E. cor. of the E. Bunton
D.L.C. No. 45

FILED *L.L.*
RECEIVED

AUG 8 1961

COUNTY SURVEYOR
DOUGLAS COUNTY, ORE.

SURVEYED AND PLATTED BY
JAMES R. DAUGHERTY
CIVIL - SANITARY ENG.
WINSTON - ORE.

SCALE 1" = 200'

AUGUST 4, 1961

