

LOT 1 & PART OF LOT 2 WOLLENBERG'S ADDITION

DOUGLAS COUNTY OREGON W.M.

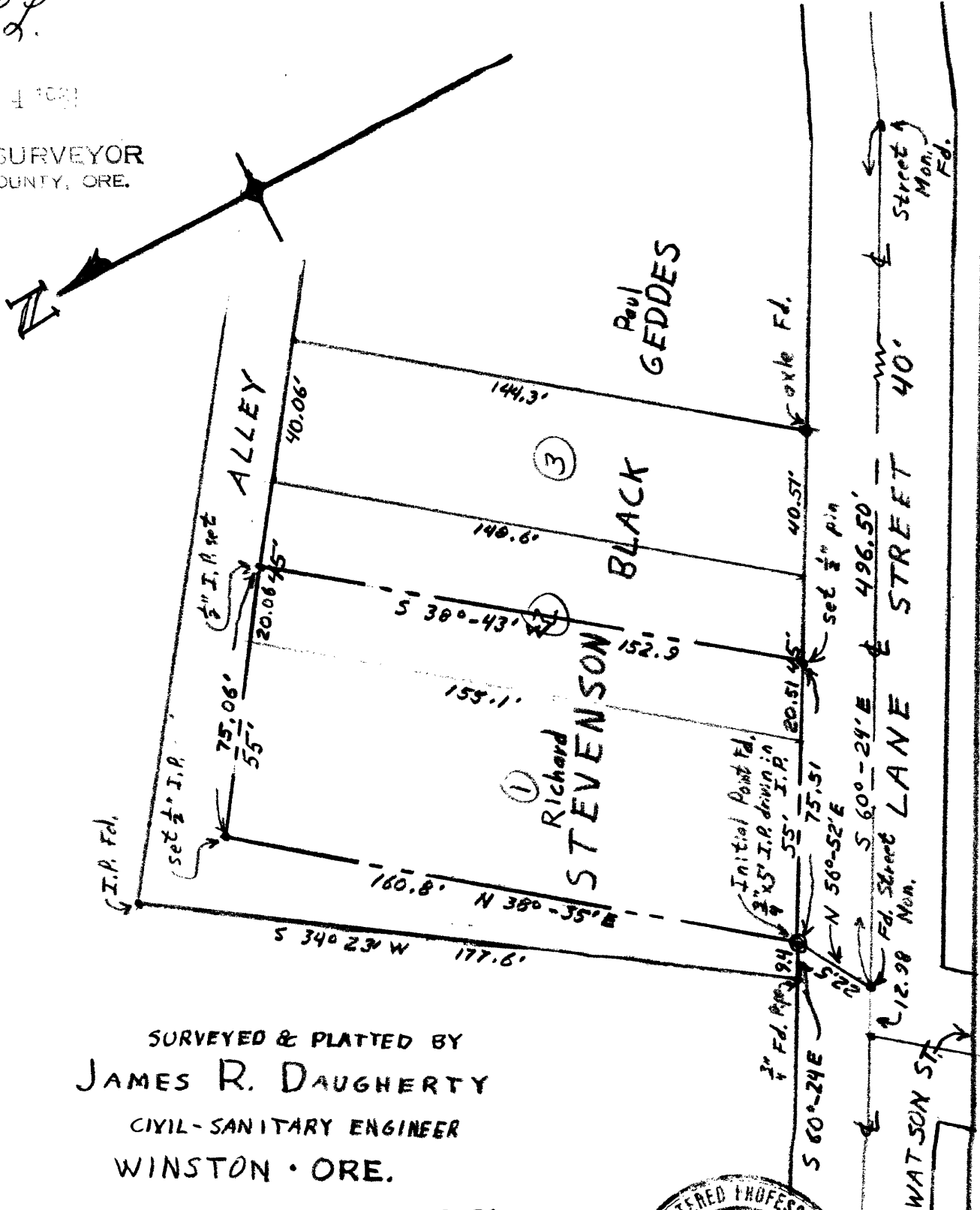
Richard Stevenson

T. 27-5 Sec. 19

FILED *L.L.*
RECEIVED

AUG 1 1961

COUNTY SURVEYOR
DOUGLAS COUNTY, ORE.



SURVEYED & PLATTED BY
JAMES R. DAUGHERTY
CIVIL-SANITARY ENGINEER
WINSTON · ORE.

COUNTY SURVEYORS FILE DATA
DO NOT REMOVE FROM OFFICE

SCALE 1" = 40'
July 29, 1961

