

G. ROBERT LECKLIDER

ENGINEER

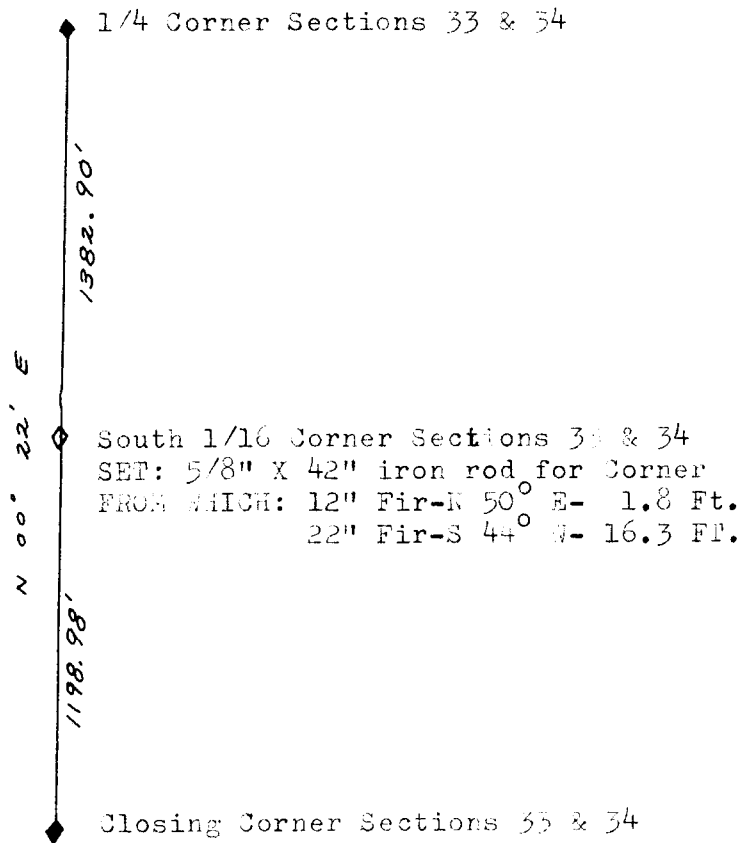
P. O. BOX 368

PHONE ORCHARD 3-3302

ROSEBURG, OREGON

SOUTH 1/16 CORNER SECTIONS 33 & 34
TO TOWNSHIP 25 SOUTH, RANGE 2 WEST, T.M.

This corner was set a proportionate distance between the N corner of sections 33 & 34 and the closing corner to sections 33 & 34 from control run by me in August, 1960 in which I subdivided section 34 for Evans Products Company and said survey filed in the Office of the County Surveyor in C.S. File No. M19-40.

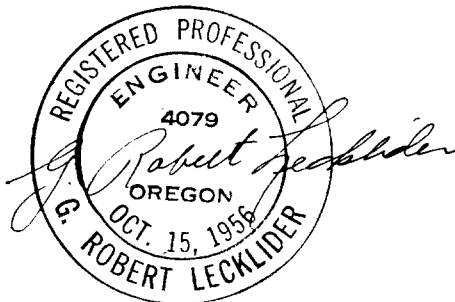


FILED

RECEIVED *L.L.*

JUL 19 1960

COUNTY SURVEYOR
DOUGLAS COUNTY, ORE.



51/206