

T. 27-6 S. 25

SURVEY OF LOTS 9, 10, 11, & 12, BLK. 22 FIRST ADDITION TO WAITE'S ADDITION, ROSEBURG, DOUGLAS COUNTY, OREGON

SURVEYED FOR: CHURCH OF THE OPEN BIBLE
SURVEYED BY: G. ROBERT LECKLIDER - ENGINEER
° DENOTES 5/8" IRON ROD SET.

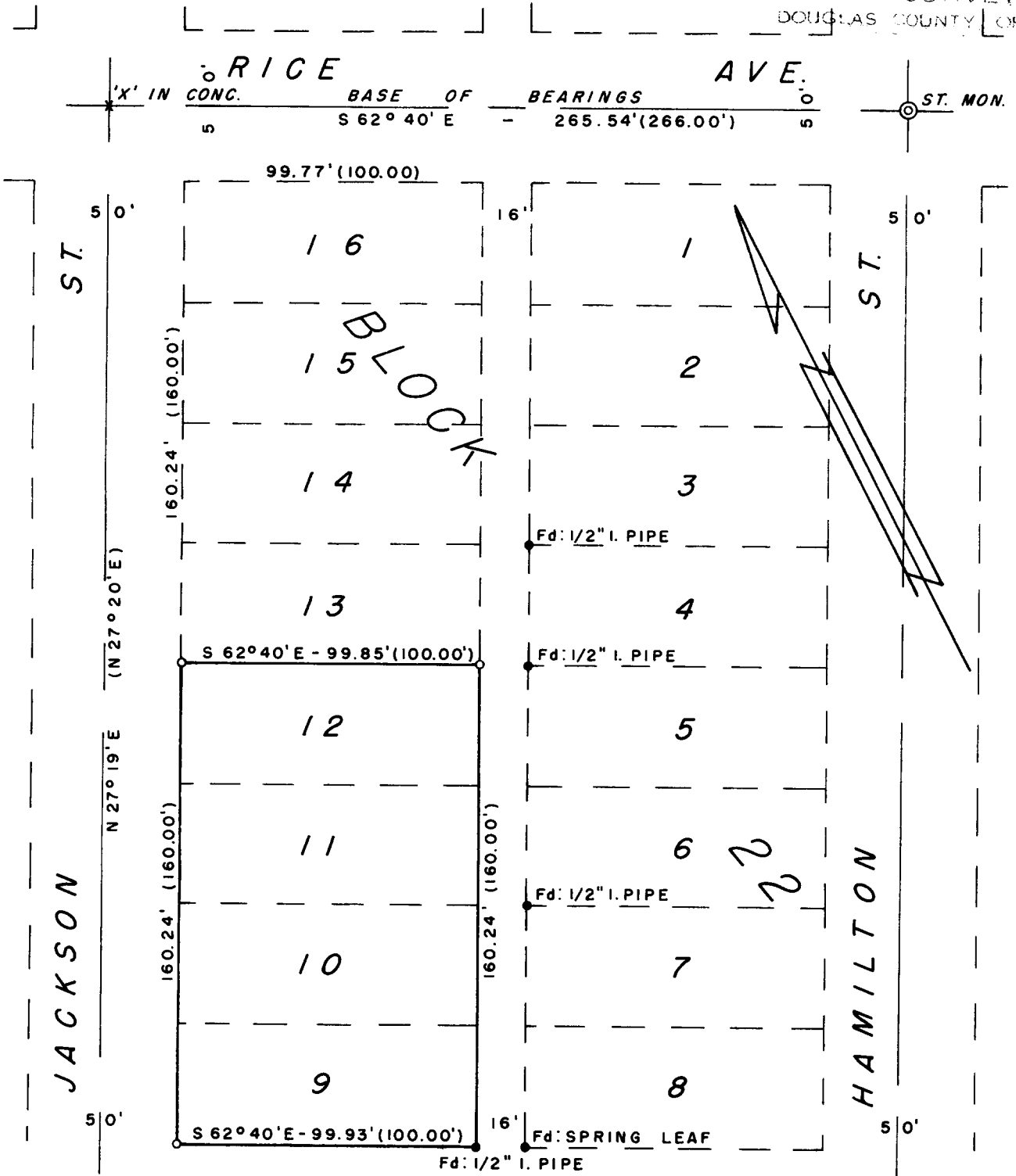
JULY, 1961
SCALE: 1" = 50'

**COUNTY SURVEYORS FILE DATA
DO NOT REMOVE FROM OFFICE**

FILED
RECEIVED *L.L.*
JUL 2 1961

NOTE: REFER TO C. S. FILE-40/95

COUNTY SURVEYOR
DOUGLAS COUNTY, ORE.



T. 27-6 S. 25

C.S. 51/205