

SURVEY IN LOT 10, SMITH ACRES
SECTION 17, T. 26 S., R. 3 W., W. M.
DOUGLAS COUNTY, OREGON

SURVEYED FOR: LYNN BECKLEY

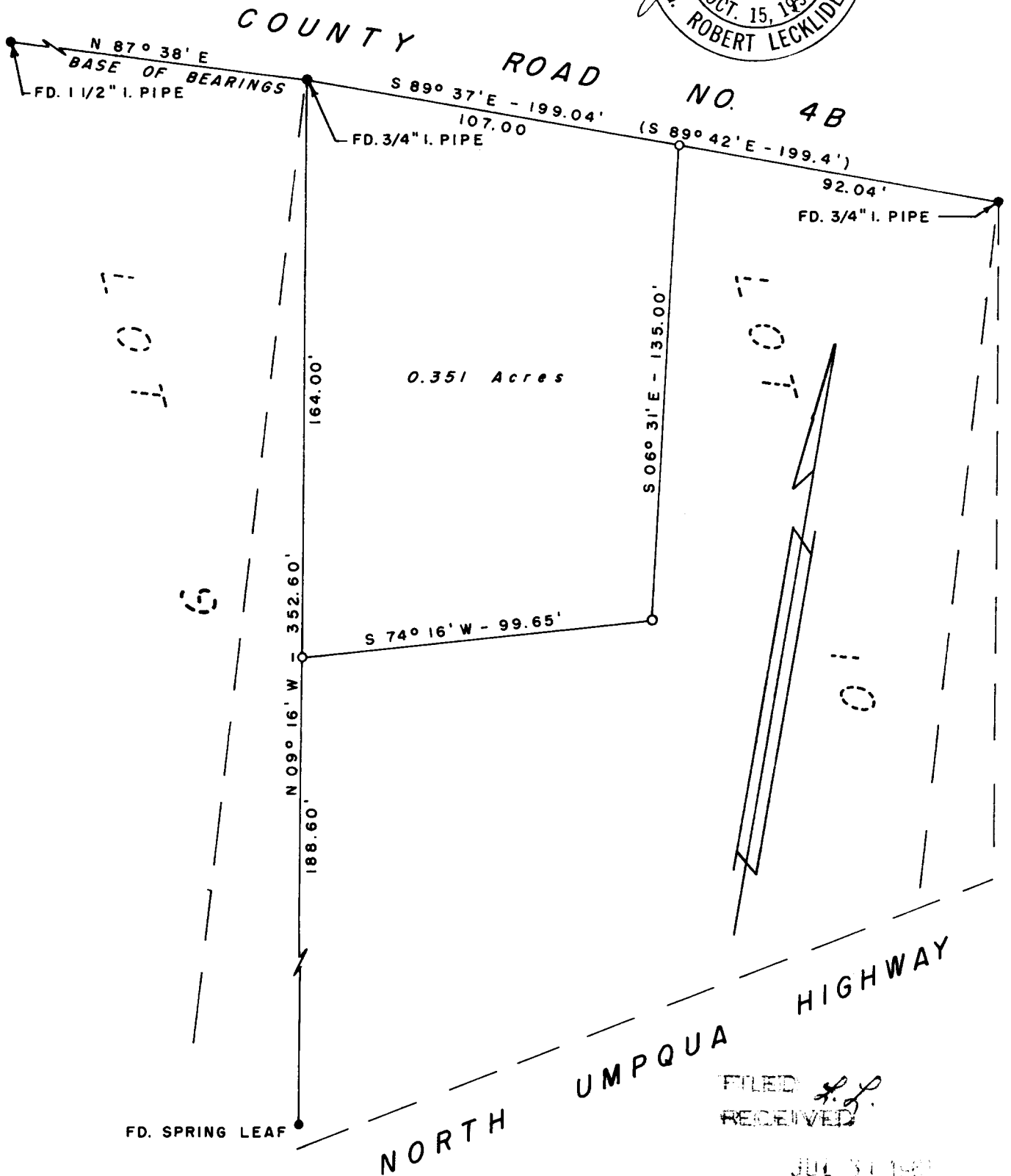
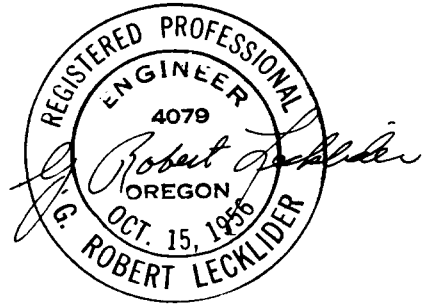
JULY, 1961

SURVEYED BY: G. ROBERT LECKLIDER - ENGINEER

SCALE: 1" = 40'

○ DENOTES 5/8" IRON ROD SET

COUNTY SURVEYORS FILE DATA
DO NOT REMOVE FROM OFFICE



FILED
RECEIVED

JUL 31 1961

COUNTY SURVEYOR
DOUGLAS COUNTY, ORE.