

COUNTY SURVEYORS FILE DATA

DO NOT REMOVE FROM OFFICE

SURVEY FOR DEED DESCRIPTION  
IN SECTION 17, T.27 S., R.5 W., W. M.

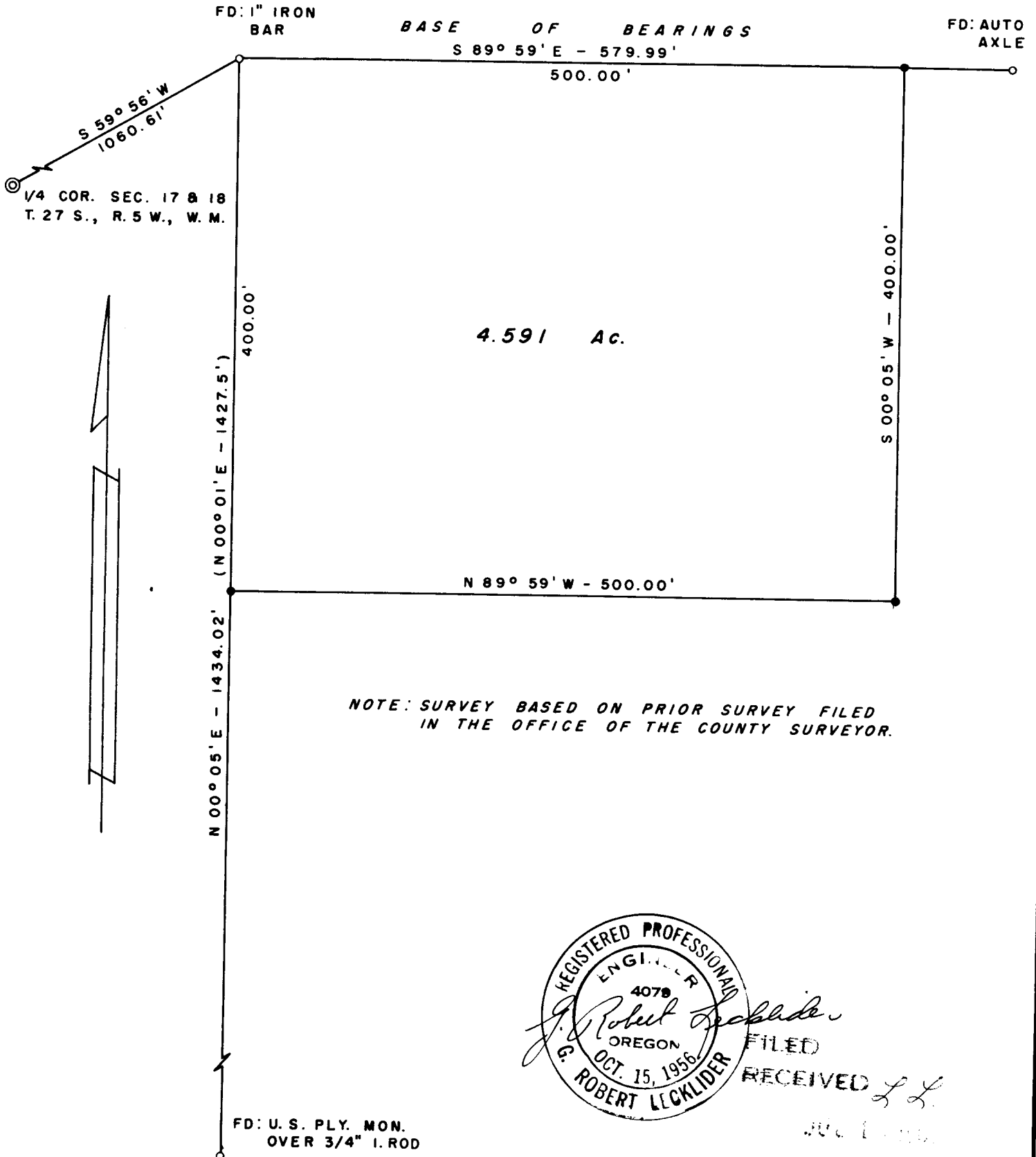
SURVEYED FOR: U. S. PLYWOOD CORP.

SURVEYED BY: G. R. LECKLIDER - ENGINEER

JULY, 1961

SCALE: 1" = 100'

• DENOTES STEEL TUBE WITH SURVEY CAP SET.



NOTE: SURVEY BASED ON PRIOR SURVEY FILED  
IN THE OFFICE OF THE COUNTY SURVEYOR.



FILED  
RECEIVED L.L.

JUL 1 1961

COUNTY SURVEYOR  
DOUGLAS COUNTY, ORE.