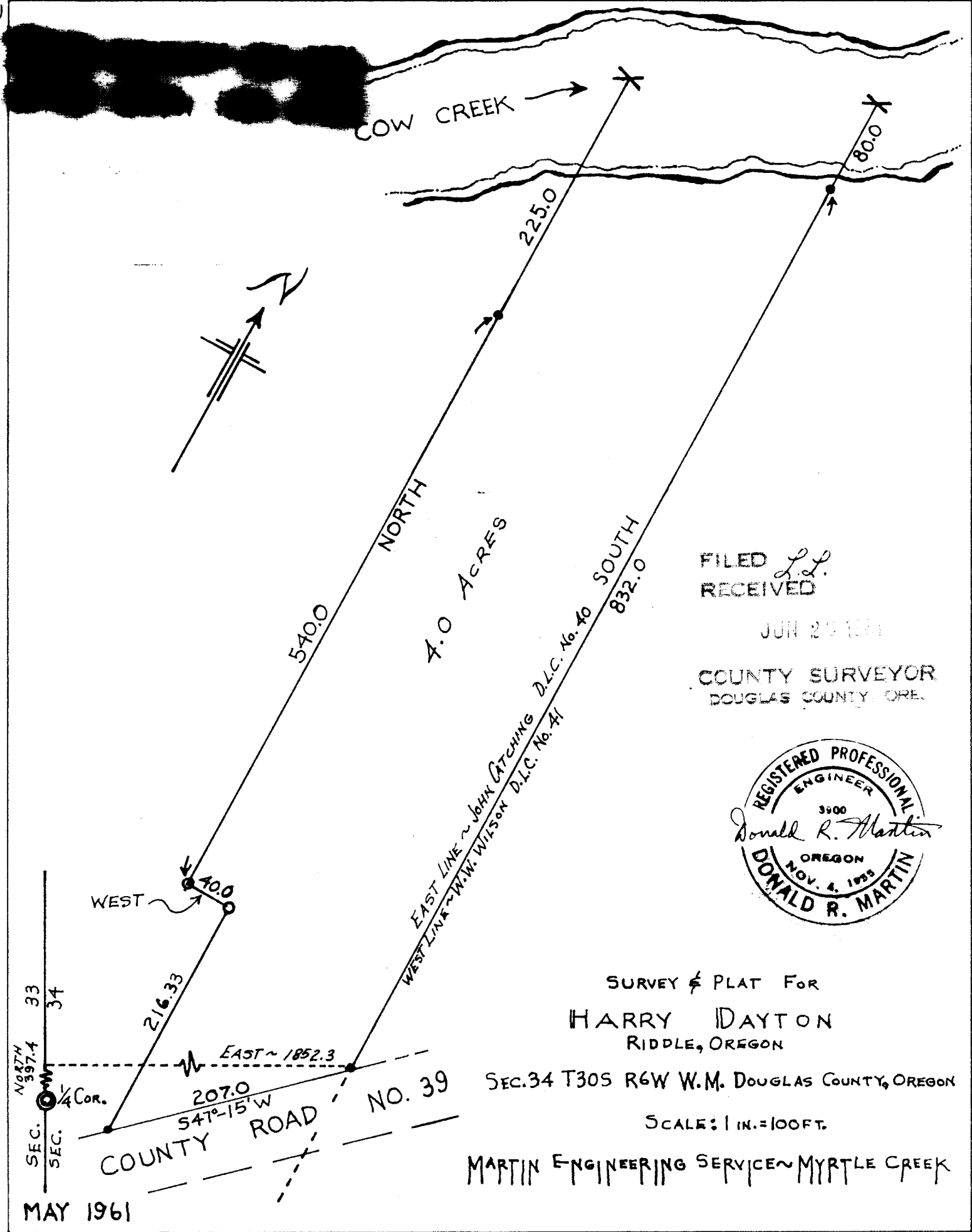


C.S. File No. 51/204-3



COW CREEK

540.0 NORTH

4.0 ACRES

225.0

832.0 SOUTH

80.0

WEST

40.0

216.33

EAST ~ 1852.3

207.0

54°-15' W

COUNTY ROAD NO. 39

EAST LINE ~ JOHN CATCHING D.L.C. No. 40
WEST LINE ~ W.W. WILSON D.L.C. No. 41

FILED L.L.
RECEIVED

JUN 20 1961

COUNTY SURVEYOR
DOUGLAS COUNTY, ORE.



SURVEY & PLAT FOR
HARRY DAYTON
RIDDLE, OREGON

SEC. 34 T30S R6W W.M. DOUGLAS COUNTY, OREGON

SCALE: 1 IN. = 100 FT.

MARTIN ENGINEERING SERVICES ~ MYRTLE CREEK

MAY 1961