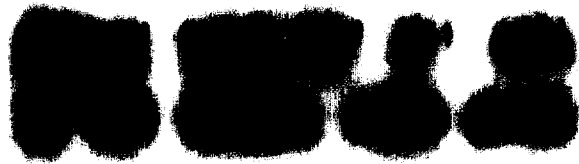
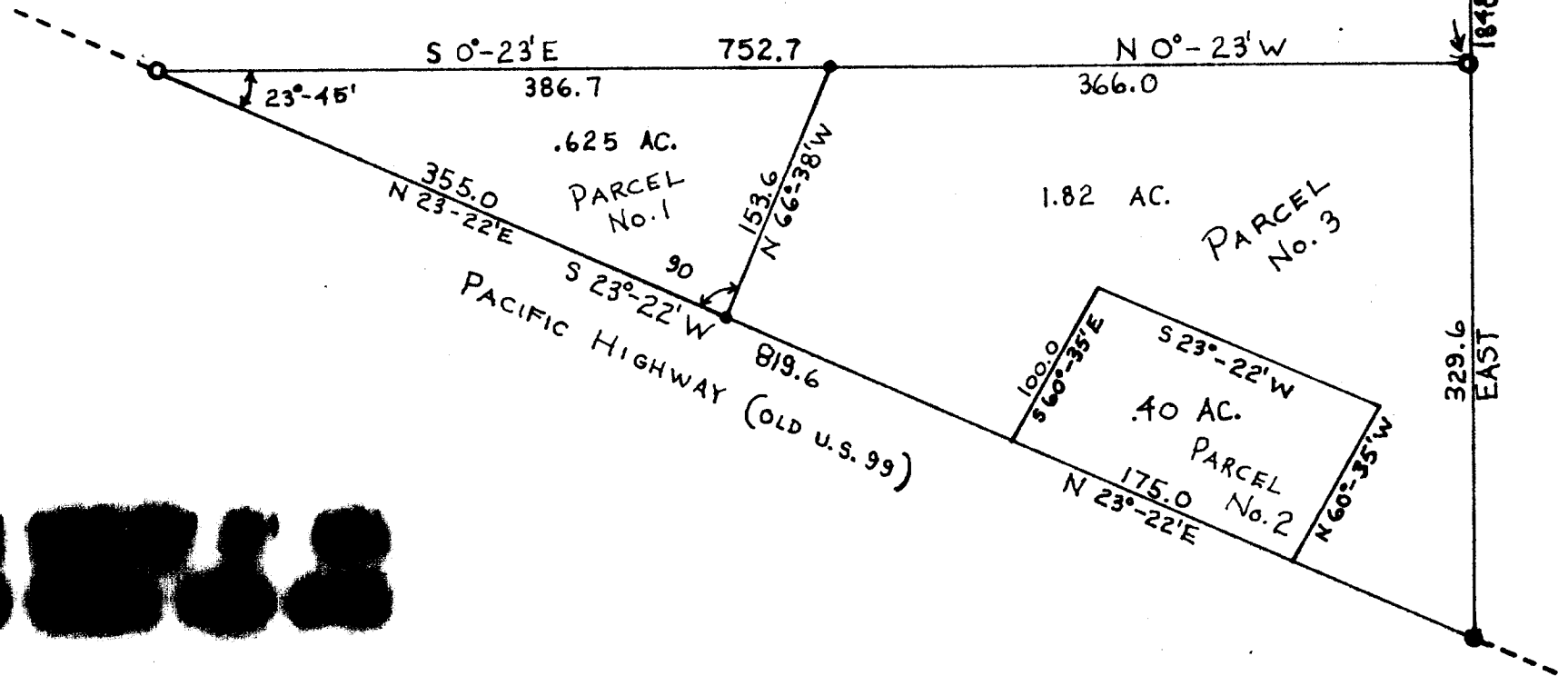


S.E. CORNER
W.M. WEAVER
D.L.C. # 39



SURVEY & PLAT PREPARED FOR
WILLARD M. BLISS
MYRTLE CREEK, ORE.

SEC. 7 T30S R5W W.M. DOUGLAS COUNTY, OREGON

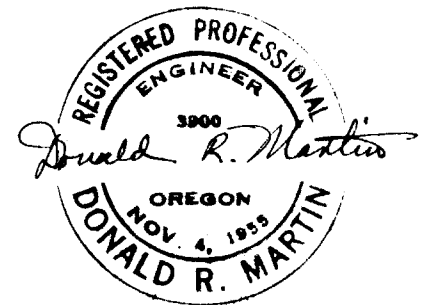
SCALE: 1 IN. = 100 FT.

MARTIN ENGINEERING SERVICE - MYRTLE CREEK

FILED
RECEIVED

JUN 29 1961

COUNTY SURVEYOR
DOUGLAS COUNTY, ORE.



MAY 1961