

FLOYD HOFFMAN PARCEL MILITARY AVE. W. ROSEBURG

SURVEYED BY

JAMES R. DAUGHERTY

CIVIL-SANITARY ENGINEER

WINSTON, ORE.

FILED RECEIVED

JUN 15 1961

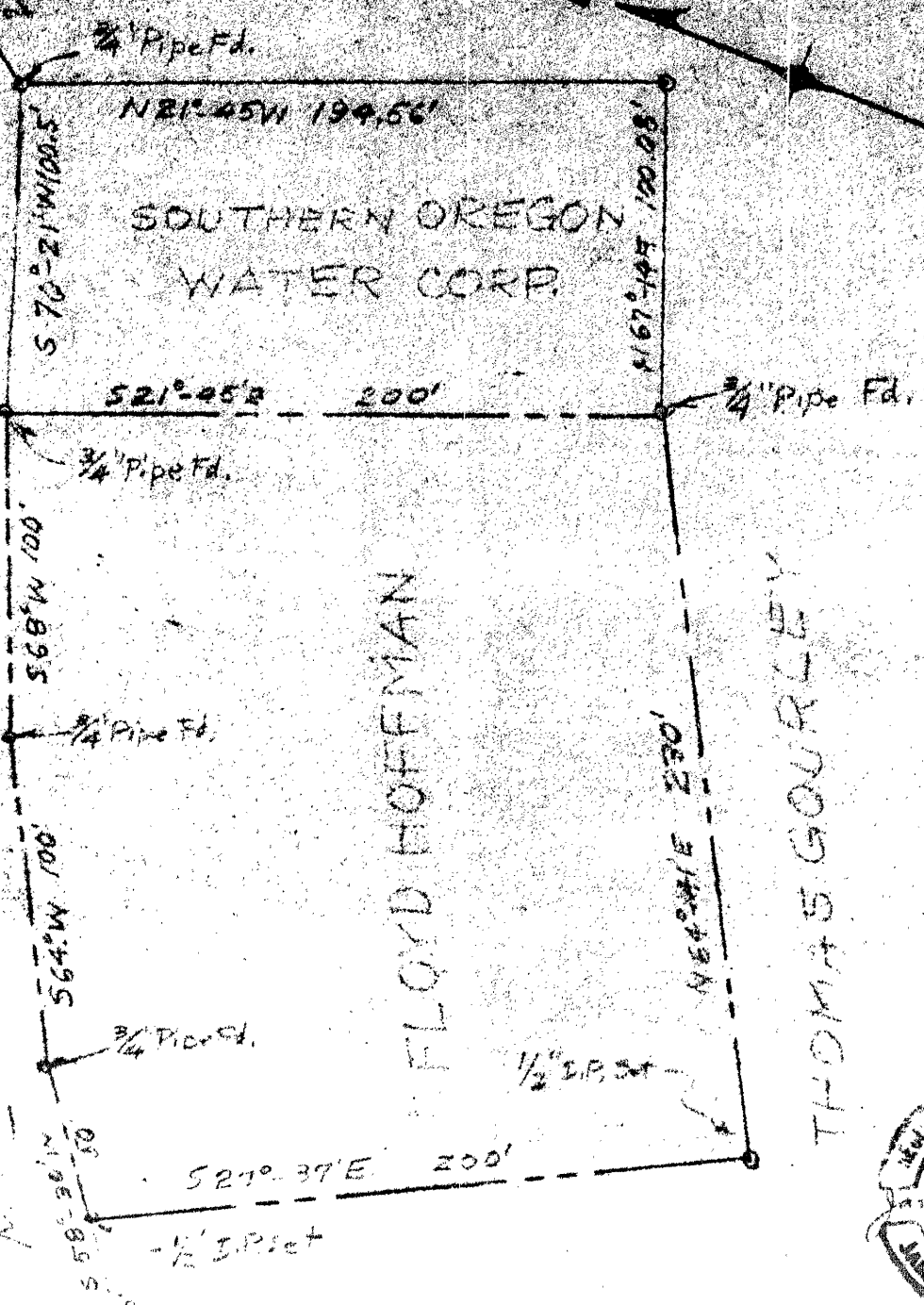
COUNTY SURVEYOR  
DOUGLAS COUNTY, ORE.

5/20/2003

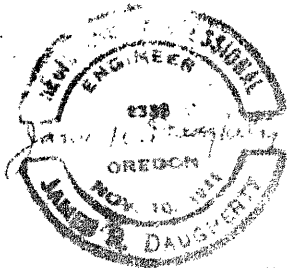
MILITARY AVENUE 60'

FLOYD HOFFMAN

THOMAS GOURLEY



C.S. File No 51/203-2



LOCATED - MAPQUAY PARK, PL. 5"