

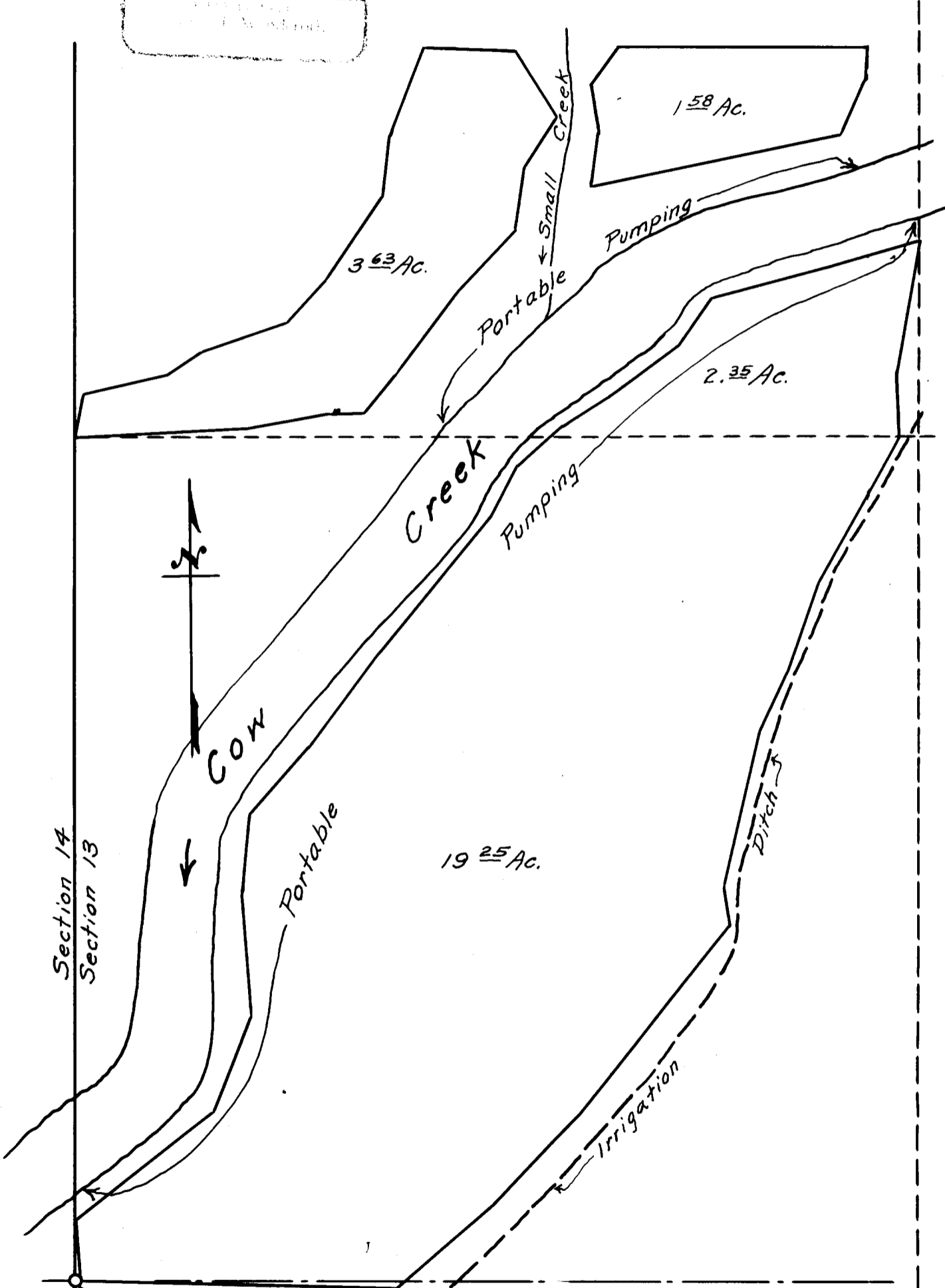
I, Geo. J. Wenderoth, of Azalea, Oregon, do hereby certify that this map was made from notes taken during an actual survey made by me on May 21, 1961; that the monument shown on this map consisting of Stone is the Quarter Corner between Sections 13 and 14, T. 32 S., R. 5 W.

Geo. J. Wenderoth

REGISTERED
OREGON
LAND SURVEYOR

Geo. J. Wenderoth

1961
MAY 21



Reference Monument
Stone, Quarter Corner between
Sections 13 & 14

**COUNTY SURVEYOR'S OFFICE
DOUGLAS COUNTY, OREGON.**

SURVEY FOR
WATER APPLICATION OF GEO. Z. NEWMAN IN
SECTION 14, T. 32 S., R. 5 W. W. M.
GEO. J. WENDEROTH, DEPUTY. MAY 21, 1961
SCALE 1" = 200 FT.