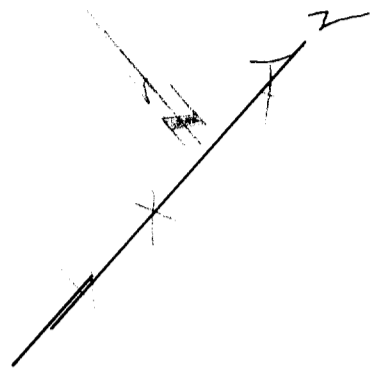
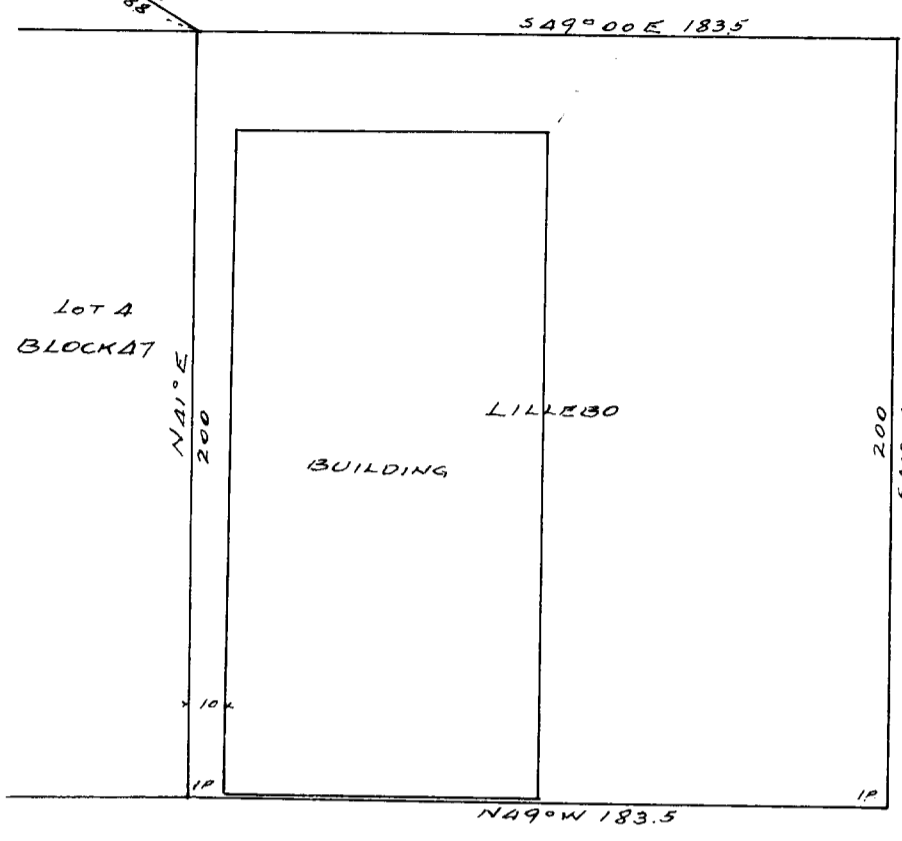
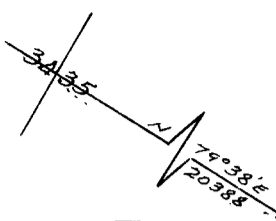


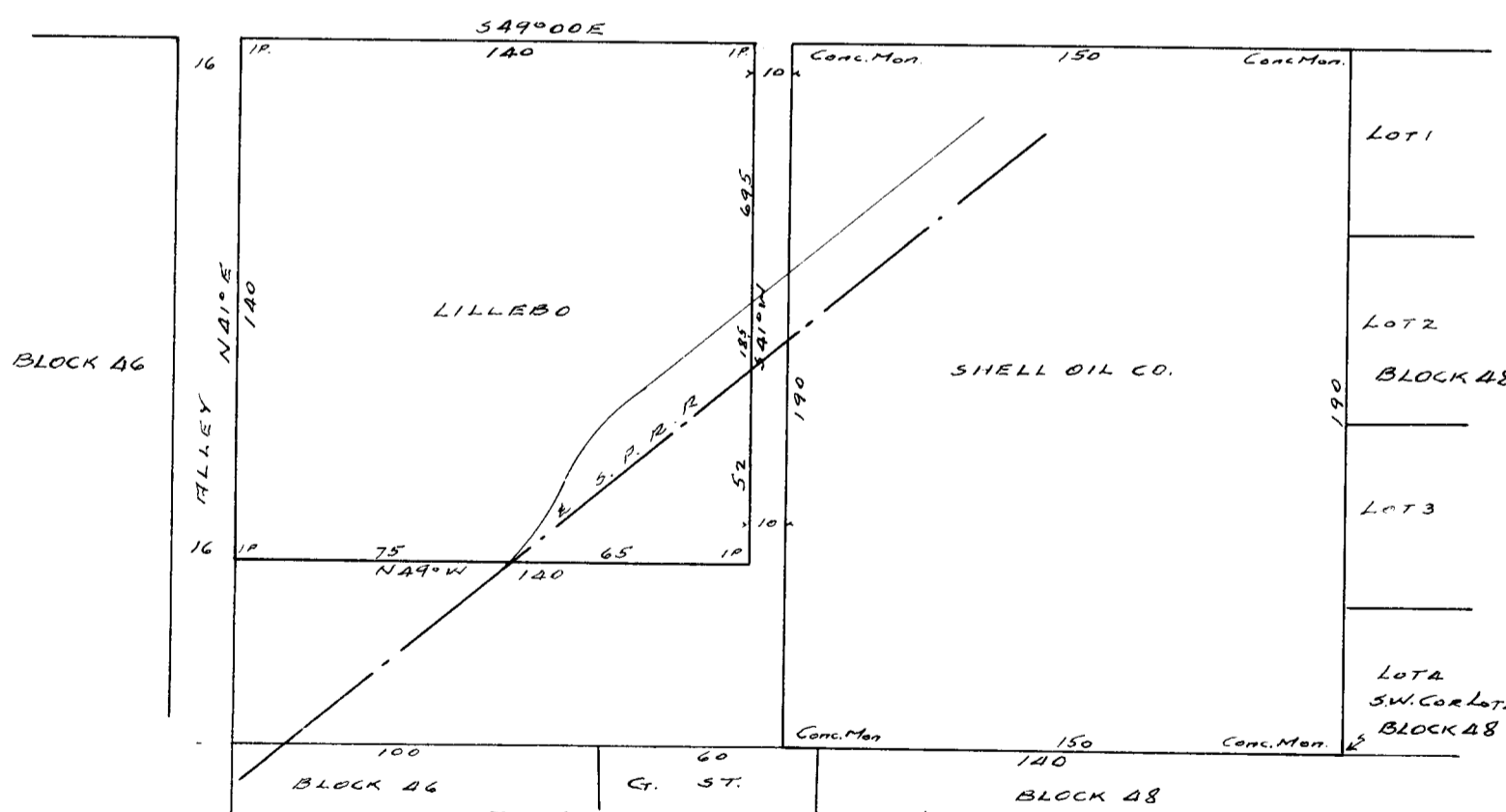
R. 12 W.



T.
21
S.

60

16TH STREET



COUNTY SURVEYOR'S FILE DATA
DO NOT REMOVE FROM OFFICE

FILED *L.L.*
RECEIVED

FEB 16 1962

COUNTY SURVEYOR
DOUGLAS COUNTY, ORE.

SURVEY
TOM LILLEBO
RAILROAD ADDITION
CITY OF REEDSPORT
DOUGLAS COUNTY
Scale 1" = 50' Jan. 1962.

Wm J. Boyer

*FILED IN 37-11-11-14
1-27-62 5:00 PM*

51/198-16