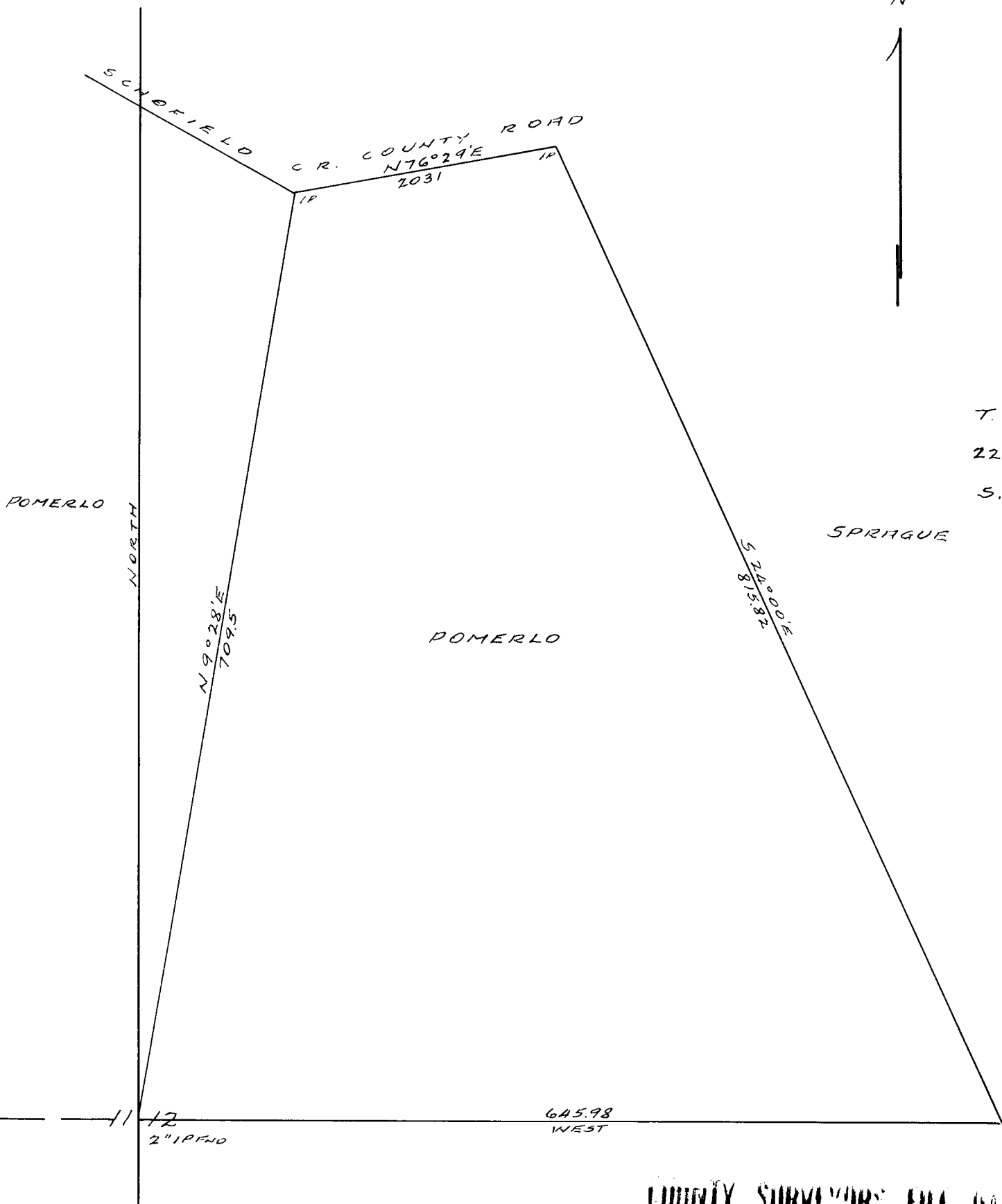


R. 12 W.

N



T.  
22  
S.



COUNTY SURVEYOR'S FILE DATA  
DO NOT REMOVE FROM OFFICE

SURVEY  
VIC POMERLO  
S.W. 1/4 N.W. 1/4 SECTION 12  
T. 22 S. R. 12 W. W.M.  
DOUGLAS COUNTY  
Scale 1" = 100' Sept 1961.

L.L.

*(Signature)*

C.S. File No. 51/1987