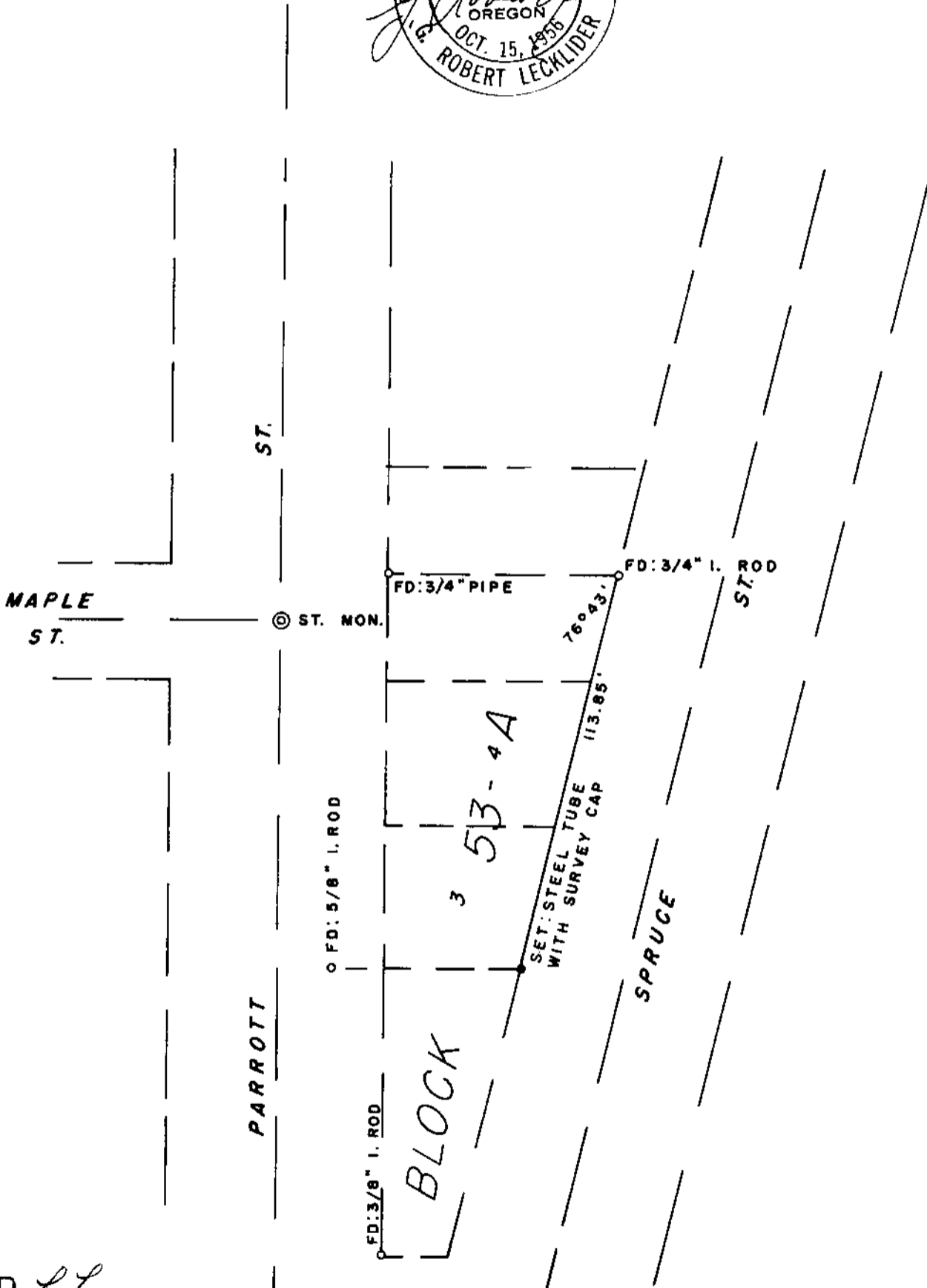
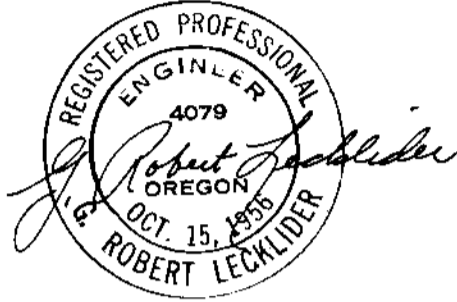


SURVEY TO SET LOT CORNER IN BLOCK 53-A, RAILROAD ADD. ROSEBURG, DOUG. COUNTY, OREG.

SURVEYED FOR: L.E. DAVIS
SURVEYED BY: G.R. LECKLIDER - ENGINEER

MAY, 1961
SCALE: 1" = 40'

**COUNTY SURVEYOR'S FILE DATA
DO NOT REMOVE FROM OFFICE**



FILED *L.L.*
RECEIVED

MAY 19 1961

COUNTY SURVEYOR
DOUGLAS COUNTY, ORE.

LANE ST.

T87 R6 524

P C. S. File No. *51/197*