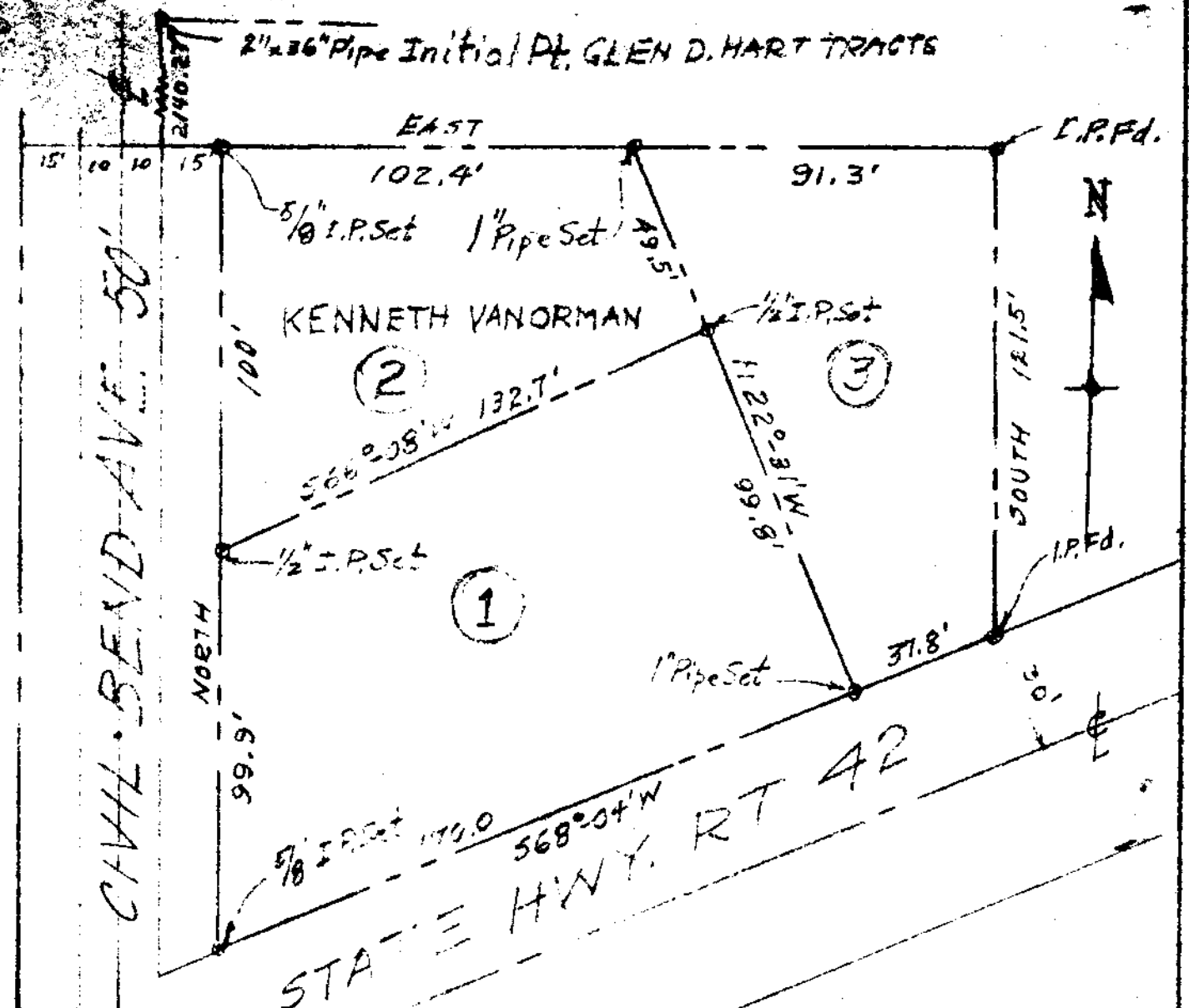


**WILSON F. VAN ORMAN PARCELS, WINSTON, OREGON**  
 IN LOTS 5, GLEN D. HART TRACTS

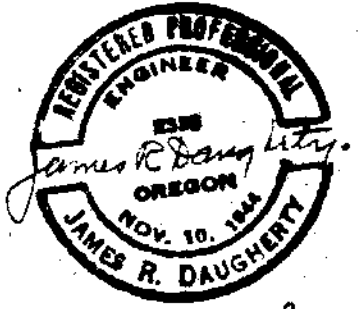


FILED *[Signature]*  
 RECEIVED

COUNTY SURVEYORS FILE DATA AUG 25 1961  
 DO NOT REMOVE FROM OFFICE COUNTY SURVEYOR  
 DOUGLAS COUNTY, ORE.

DESIGNED BY

JAMES R. DAUGHERTY  
 CIVIL-SANITARY ENGINEER  
 WINSTON, ORE.



Scale 1"=40'  
 Rev. Aug. 28, 61  
 APRIL 17, 1961.