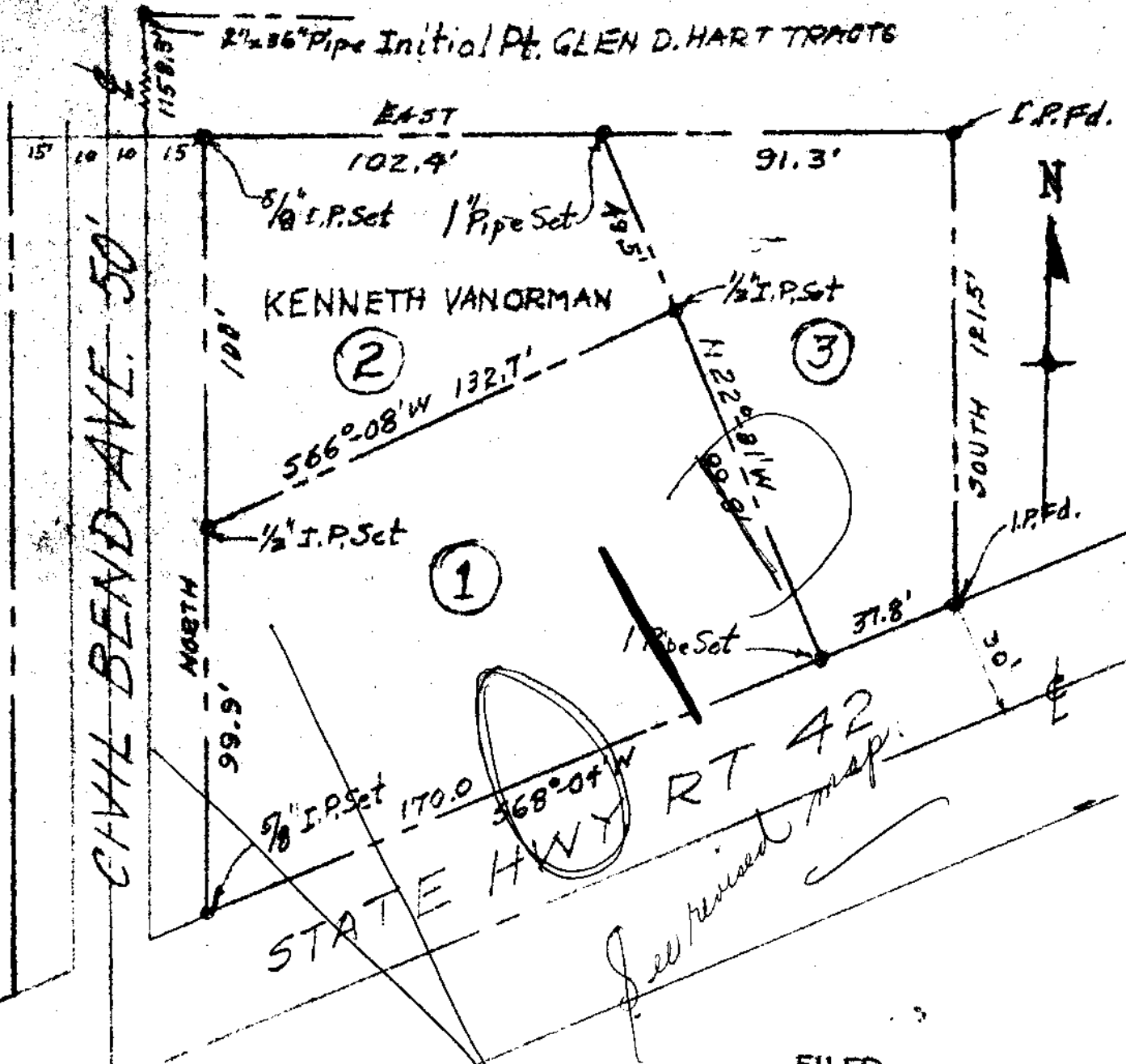


MARION F. VAN ORMAN PARCELS, WINSTON, OREGON  
 IN LOT 5, GLEN D. HART TRACTS



COUNTY SURVEYORS FILE DATA  
 DO NOT REMOVE FROM OFFICE

FILED  
 RECEIVED

MAY 2 1961

COUNTY SURVEYOR  
 DOUGLAS COUNTY, ORE.

SURVEYED BY

JAMES R. DAUGHERTY



SCALE 1"=40'

MAP  
 REVISED  
 APR. 28, 1961 CIVIL-SANITARY ENGINEER  
 APRIL 17, 1961. THE TO INITIAL  
 POINT WRONE WINSTON, ORE.