

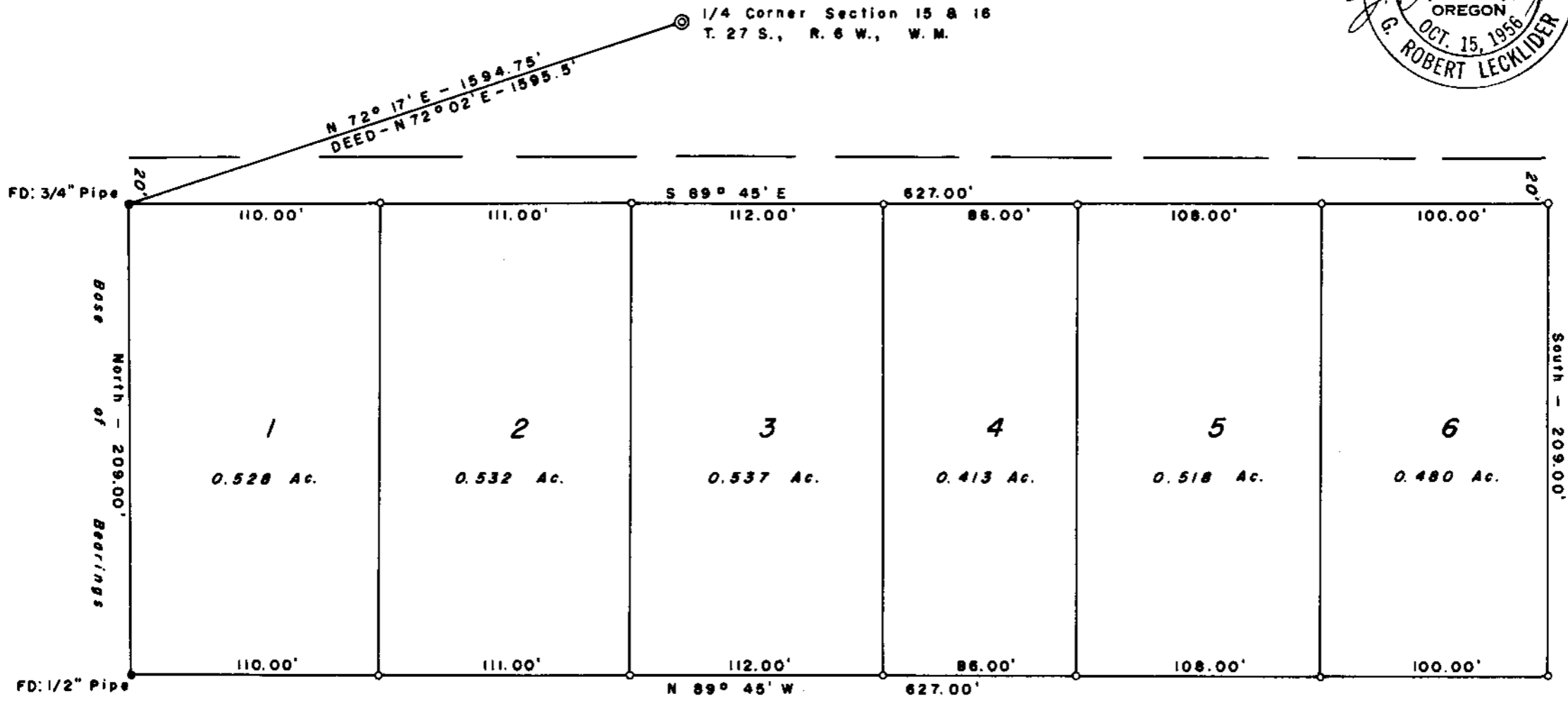
FILED *SL*
RECEIVED

APR 18 1961

COUNTY SURVEYOR
DOUGLAS COUNTY, ORE.

SURVEY IN
SE 1/4, SECTION 16, T.27 S., R.6 W., W. M.
SURVEYED FOR: FRED E. HOGUE
SURVEYED BY: G. R. LECKLIDER - ENGINEER
APRIL, 1961
SCALE: 1" = 60'
o Denotes Steel Tube with Survey Cap Set

COUNTY SURVEYORS FILE DATA
DO NOT REMOVE FROM OFFICE



C. S. File No. 51/192

45/185