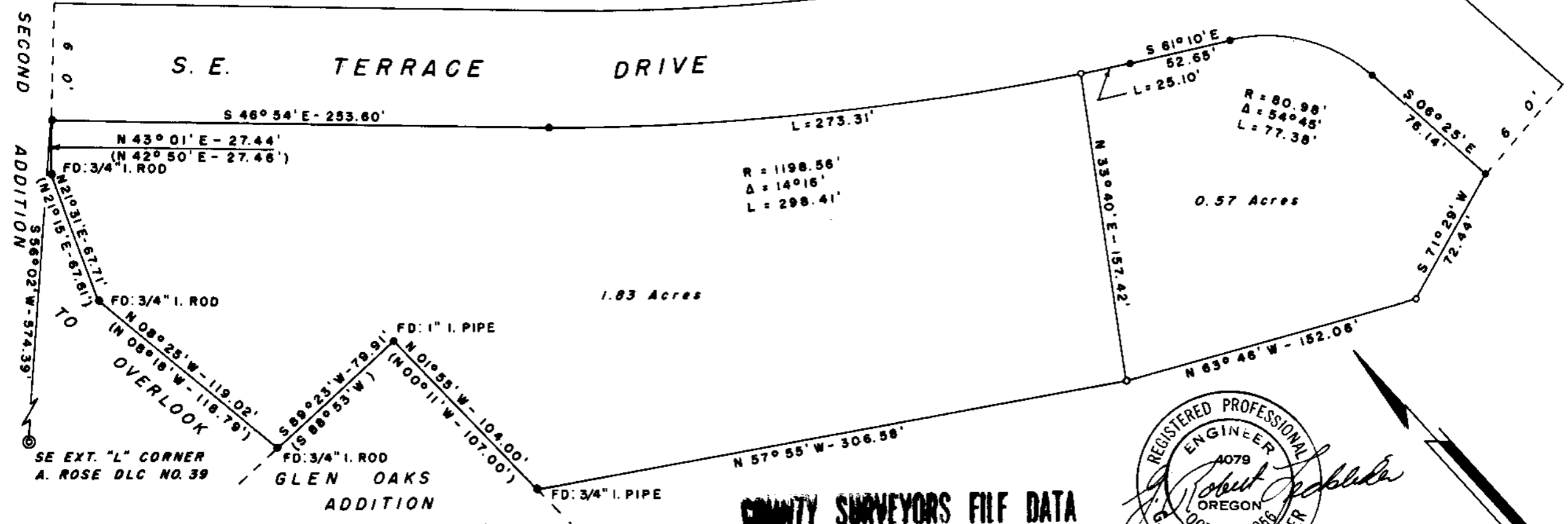


THIRD ADDITION TO OVERLOOK

SECOND ADDITION

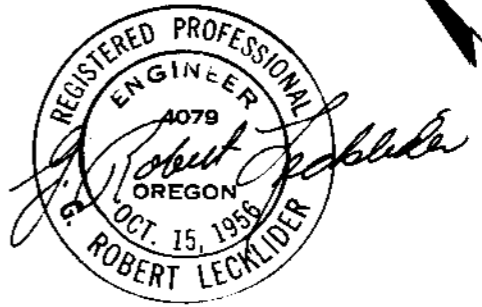
S. E. TERRACE DRIVE



SE EXT. "L" CORNER  
A. ROSE DLC NO. 39

GLEN OAKS  
ADDITION

COUNTY SURVEYORS FILE DATA  
DO NOT REMOVE FROM OFFICE



NOTE: REFER TO PLAT OF "THIRD ADDITION TO OVERLOOK"  
 \* DENOTES STEEL TUBE WITH SURVEY CAP FOUND UNLESS OTHERWISE NOTED.  
 O DENOTES STEEL TUBE WITH SURVEY CAP - SEE

FILED  
RECEIVED

APR 11 1961

COUNTY SURVEYOR  
DOUGLAS COUNTY, ORE.

SURVEY FOR DEED DESCRIPTION  
 IN SECTION 19, T. 27 S., R. 5 W., W. M.  
 DOUGLAS COUNTY, OREGON  
 SURVEYED FOR: GEORGE LUOMA  
 SURVEYED BY: G. R. LECKLIDER - ENGR.  
 MARCH, 1961  
 SCALE: 1" = 60'