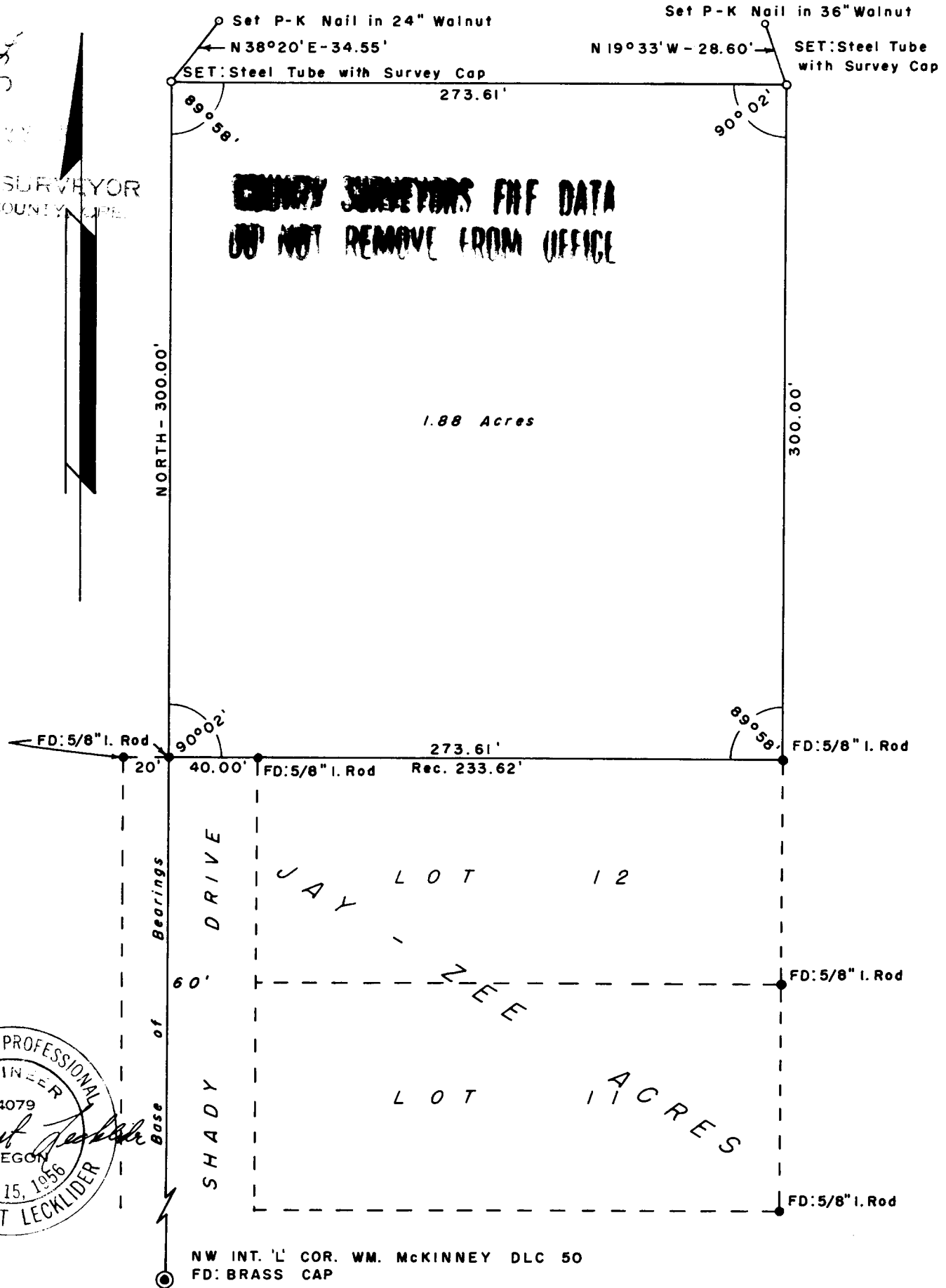


# SURVEY FOR DEED DESCRIPTION IN SECTION 4, T. 27 S., R. 6 W., W.M. DOUGLAS COUNTY, OREGON

SURVEYED FOR: E. G. ZEIGLER MARCH, 1961  
SURVEYED BY: G. R. LECKLIDER - ENGR. SCALE: 1" = 60'

FILED  
RECEIVED

COUNTY SURVEYOR  
DOUGLAS COUNTY, OREGON

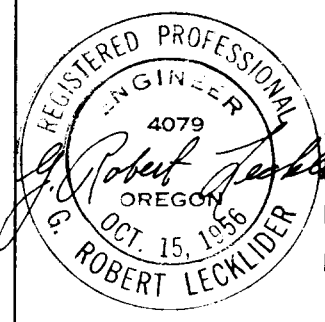


**ENGINEY SURVEYORS FILE DATA  
DO NOT REMOVE FROM OFFICE**

1.88 Acres

JAY LOT 12

SHADY LOT 11 ACRES



NW INT. 'L' COR. WM. MCKINNEY DLC 50  
FD: BRASS CAP