

Point is North 1754.6  
West 79.7  
from 1/4 Cor. 2

Sta. 29+65.5  
= End County Road Survey  
from 1/4 Cor. 2

25.9-Acre Tract to be  
conveyed by Van Dolah  
to Weyerhaeuser Company

WEYERHAEUSER

VAN DOLAH

WEYERHAEUSER

1/4 Cor.  
Brass Cap  
(Set 1943 by G.L.O.)

0700 of 1936 County Road No. 71  
Survey - See Doug. Co. Deed Records  
Vol. 91, Pg. 426  
South 475.0 &  
East 51.8 from East  
1/4 Cor. Sec. 2

Location of Sec  
Line by Oscar  
Thiel Survey  
or 1894

Point South 898.9 &  
East 51.8 from  
East 1/4 Cor. Sec. 2

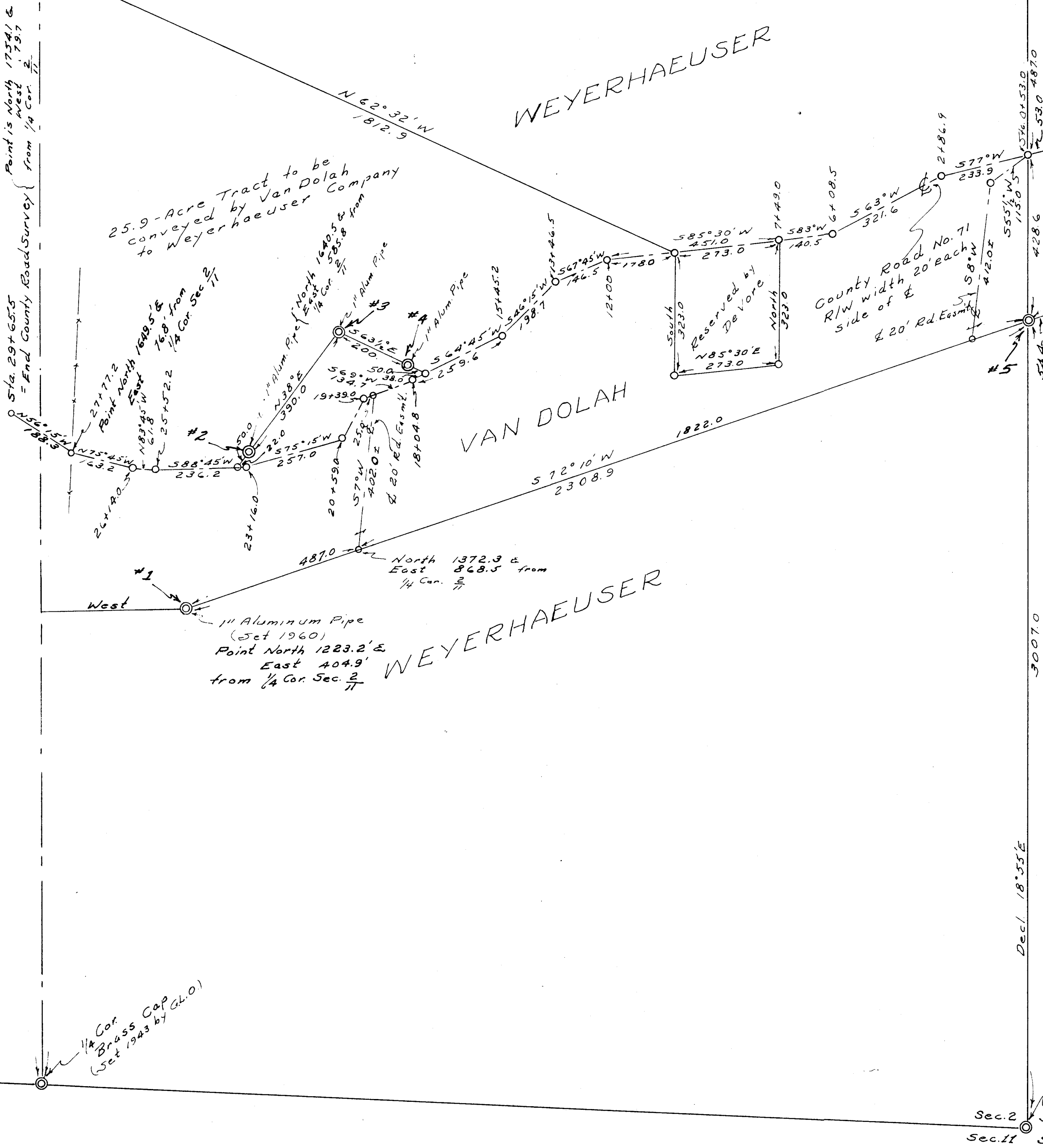
WEYERHAEUSER COMPANY  
**N. F. VAN DOLAH PURCHASE**  
IN  
**SE 1/4 SEC. 2, T23S, R6W, W.M.**

SCALE ~1"=200'

W.L.W. 9-8-60  
" & L.E.C. 9-20-60

Note: Bearings shown  
are based on assumed  
magnetic declination of  
20°00' East.

C.S. File No. 51/180A



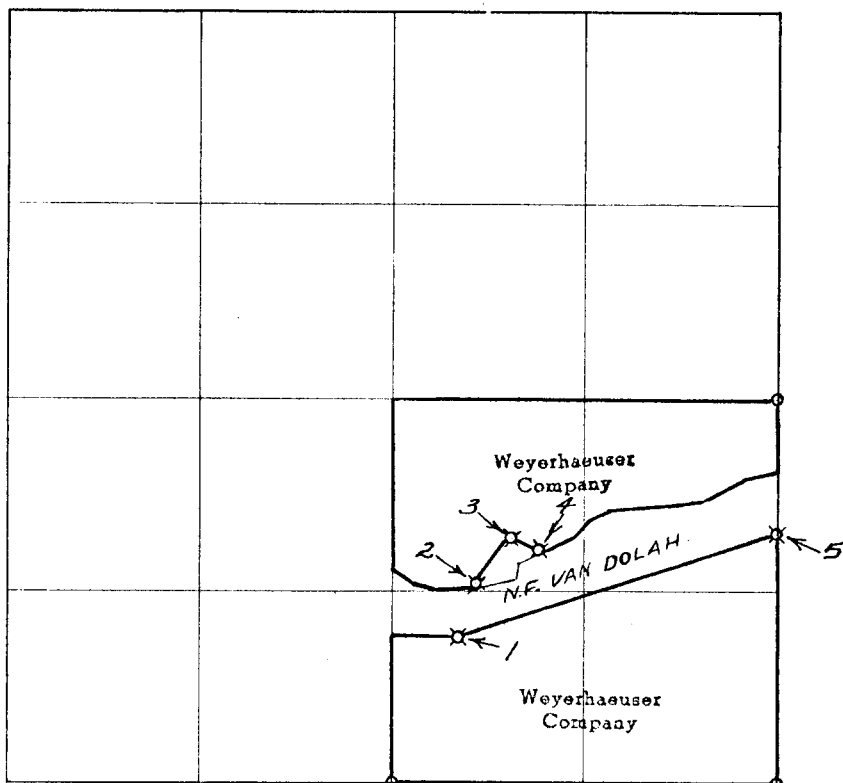
Decl. 18° 55' E  
3007.0  
Sec. 2  
Sec. 1  
Sec. 11  
Sec. 12

1/4 Cor.  
Brass Cap  
(Set 1943 by G.L.O.)

Sec. Cor.  
Brass Cap  
(Set 1943 by G.L.O.)

# Weyerhaeuser Company

Section 2 Township 23 S. Range 6 W.



— # — # — Line marked by notch cut in blaze

○ Known corner

⊠ Referenced corner

Staff compass and abney slope chain survey.

This survey was made for Weyerhaeuser Company by Lyle E. Boustead under the supervision of Lester E. Calder, Oregon Licensed Engineer, Registration No. 2149.

Helpers: Robert Barta

William Wilt



Dates of survey August, 1960

Date filed for record & where February, 1961

Distribution

Douglas County Surveyor's Office

W. Co.-Spfld. Land Dept.

" - " Survey File

" - Tacoma Land Records

W. F. Van Dolah, Yoncalla

W. N. Haints - Drain

Reported December 1960

By Lyle E. Boustead

This is a report on the survey of the common boundary between the N. F. Van Dolah property and Weyerhaeuser Company property in the SE $\frac{1}{4}$  Section 2-23S-6W.

The monuments set by this survey are located and referenced as follows:

POINT NO. 1 Set a 1" aluminum pipe for property corner at a point which is North, 1223.2 feet and East, 404.9 feet from the 1/4 corner common to Sections 2 and 11-23S-6W as set in 1943 by the U. S. Cadastral Engineer.

Referenced by William Wilt (Plates and "W" nails only).  
Declination 20°

10" Fir	N 58° E	12.6'
12" Fir	S 62° W	21.5'

POINT NO. 2 Set a 1" aluminum pipe on common property boundary at a point which is North, 1640.5 feet and East, 585.8 feet from the 1/4 corner common to Sections 2 and 11-23S-6W as set in 1943 by the U. S. Cadastral Engineer and from which point a point on the centerline of County Road No. 71 bears S 38° W a distance of 50.0 feet.

Referenced by William Wilt (Plates and "W" nails only).  
Declination 20°

4" Fir	N 85° E	13.9'
10" Fir	S 79° W	62.8'

POINT NO. 3 Set a 1" aluminum pipe for property corner at a point which bears N 38° E a distance of 390.0 feet from POINT NO. 2.

Referenced by William Wilt (Plates and "W" nails only).  
Declination 20°

12" Fir	N 18° W	53.1'
8" Fir	N 77° E	59.7'

POINT NO. 4 Set a 1" aluminum pipe on common property boundary at a point which bears S 63 $\frac{1}{2}$ ° E a distance of 200.0 feet from POINT NO. 3 and from which point a point on the center line of County Road No. 71 bears S 63 $\frac{1}{2}$ ° E a distance of 50.0 feet.

Referenced by William Wilt (Plates and "W" nails only).  
Declination 20°

4" In.Cedar	N 21° E	20.5'
6" In.Cedar	N 49° W	37.0"

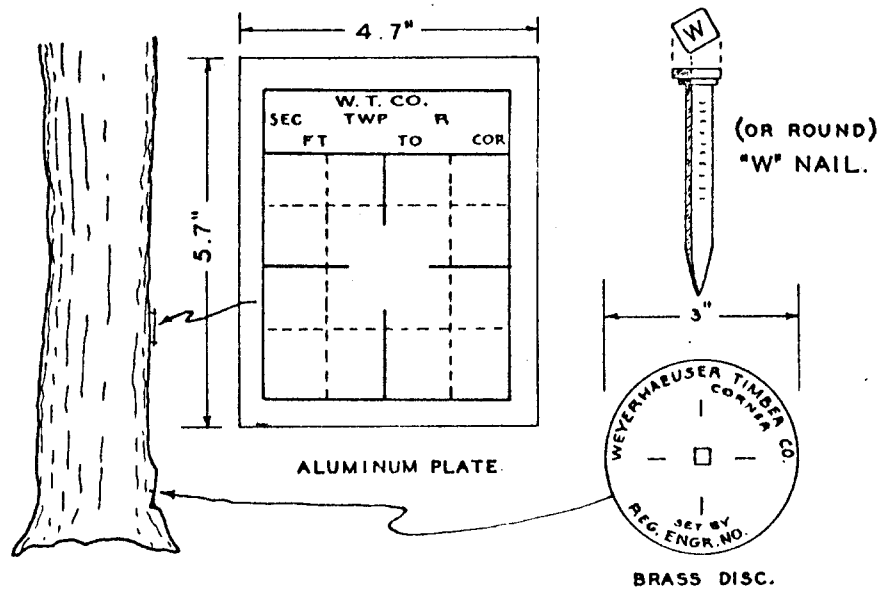
POINT NO. 5 · Set a 1" aluminum pipe for property corner on the East line of the SE¼ Section 2-23S-6W at a point which is S 01° 05' W a distance of 915.6 feet from the 1/4 corner common to Sections 1 and 2-23S-6W as set in 1943 by the U. S. Cadastral Engineer.

Referenced by William Wilt (Plates and "W" nails only)  
Declination 20°

26" Red Cdr N 71° E 58.4'  
16" Fir S 85° W 45.0'

WEYERHAEUSER TIMBER COMPANY CORNER REFERENCE METHOD

A "W" nail driven thru the hole in a brass disc, into a notch cut low on a tree, stamped with the Oregon registered land surveyor or professional engineer registration number. An embossed aluminum plate nailed head high on same tree with 8d aluminum nails, with distance and bearing from the "W" nail to the corner stamped on it.



FILED  
RECEIVED

FEB 23 1961

COUNTY SURVEYOR  
DOUGLAS COUNTY, ORE.

C.S. No. 57