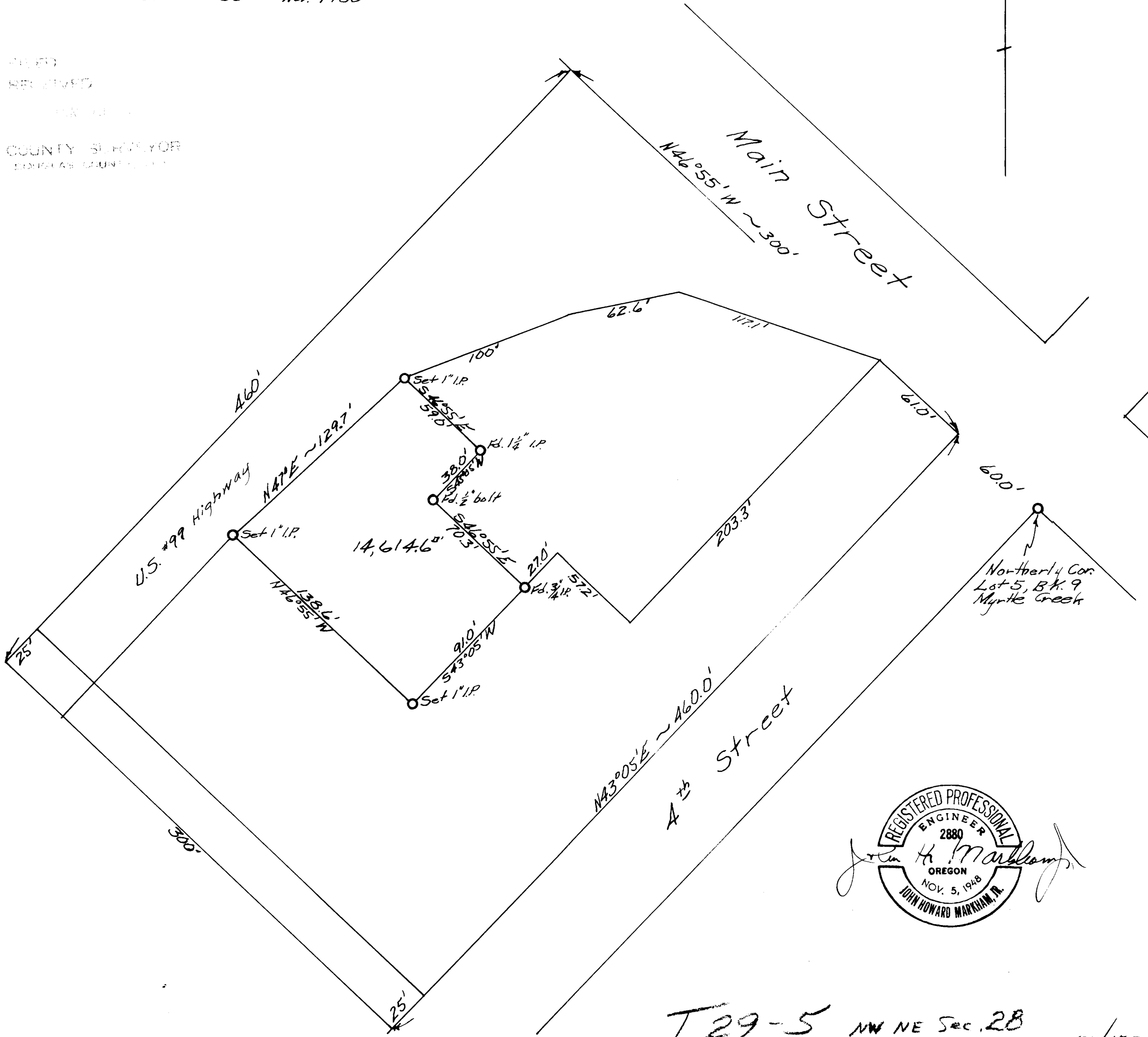


COUNTY SURVEYORS FILE DATA
DEPT. OF REVENUE & FINANCE OFFICE

Prepared for
NED G. NORTON
 Scale 1" = 50' Nov. 1950

FILED
 RECEIVED

COUNTY SURVEYOR
 EDWARDS COUNTY, ILL.



T. 29-5 NW NE Sec. 28
 51/1777