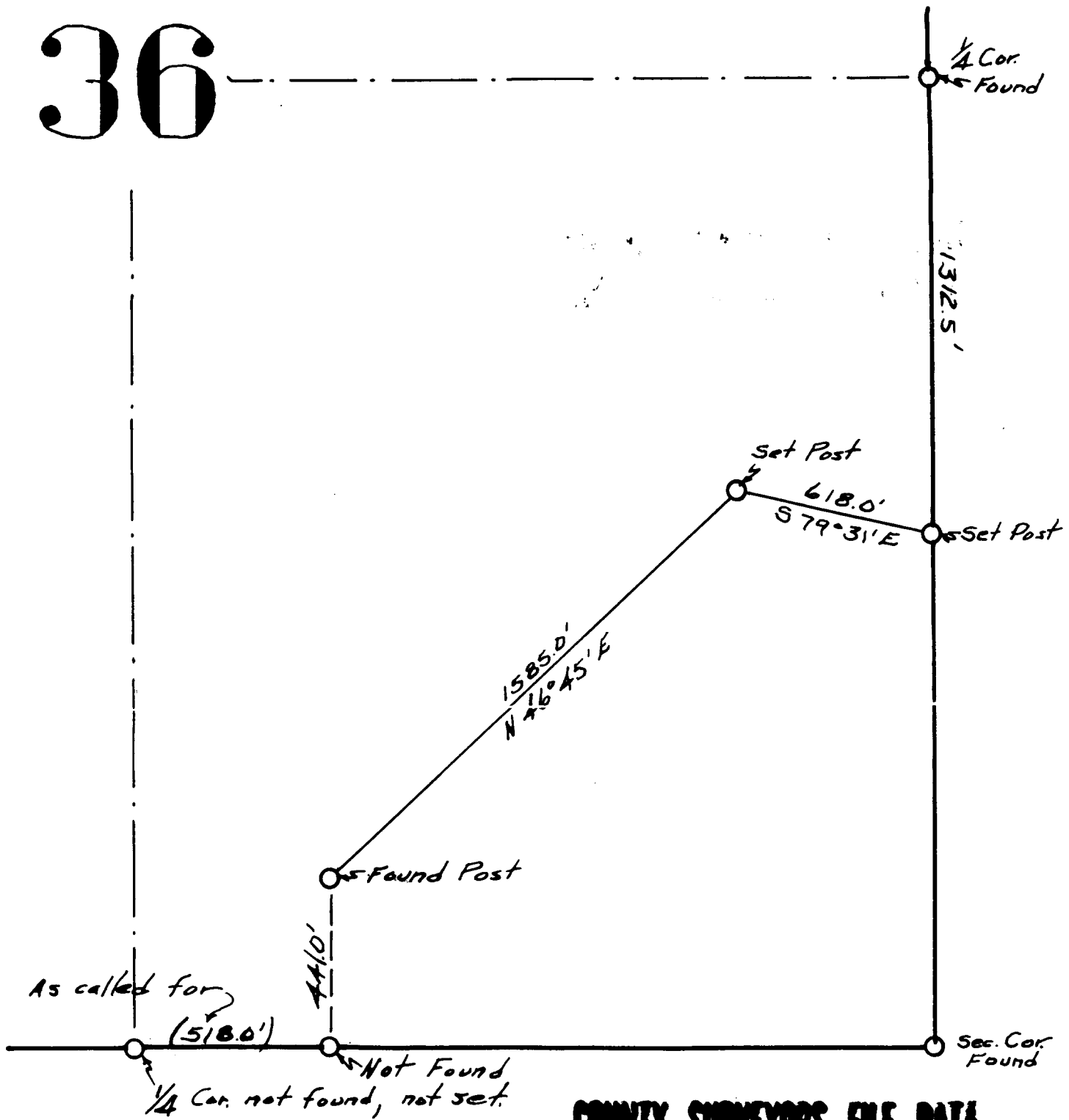


36



**COUNTY SURVEYOR'S FIELD DATA
DO NOT REMOVE FROM OFFICE**

PREPARED FOR

C.W. CLEVELAND

S.E. 1/4, SECTION 36 T. 32 S., R. 5 W., W.M.

FILED
RECEIVED

JAN 24 1949

COUNTY SURVEYOR
DOUGLAS COUNTY, MO.

SCALE 1" = 400'

MARCH 1949

John H. Marshall

C. S. File No. 51/177-P5